



Stream Access Legislation news from the Utah BASS Federation

Members,

This request maybe strange to some as it concerns the Stream Access legislation being worked on at the Legislature. If anyone has an opinion, comments etc. Please send them to me. We as bass anglers may not think we have much to do with this legislation, but...

If I did this right here is a link to Brett Prettyman's article:

http://www.sltrib.com/ci_11519012

Orienteering Meeting Reminder

Monday, February 9 at 8:00 pm. Meet at InterPlan offices in Midvale for a short meeting to plan 2009. (Directions on the www.o-utah.org website)

Agenda:

Evaluate 2008 season
We'll decide on the 2009 schedule
Define volunteers to run the events
Identify new areas to map
Discuss publicity
Decide on extra classes



If you haven't noticed, we're a very casual group. We welcome anyone, experienced or not, who'd like to help keep Orienteering alive in Utah. My guess is there will be 4 or 5 of us at this meeting so there's opportunity for YOU to contribute and get more involved.

Youngest Musher Halsnes Posts Fastest Time in Day Six of International Pedigree Stage Stop Sled Dog Race;

February 5, 2009—Park City, Utah—Fifteen-year-old Krista Halsnes from Steamboat Springs, Colo., posted the fastest time on Day Six of the International Pedigree Stage Stop Sled Dog Race (IPSSSDR). Halsnes, a freshman at Steamboat Springs High School averaged 10.6 miles per hour on the 53-mile stage for a time of 5:00:43. Melanie Shirilla from Lincoln, Mont., was second with a time of 5:02:42. Ken Josefsen was third with a time of 5:04:22.

In overall times, Shirilla maintains the lead with 19:29:43. Wendy Davis from



Lander, Wyo., is second with 20:17:41, and Sam Perrino from Yellowknife, Northwest Territories in Canada is third with 20:29:19.

On Friday, the 45-mile Bridger Valley Stage begins at 10 a.m. on North Slope Road 30 miles south of Evanston on the Mirror Lake Scenic Byway. The race concludes Saturday, February 7, at Quinn’s Junction in Park City, Utah

With its unique dog-friendly “stage stop” racing format, the IPSSSDR stops in a different community each night, allowing the host towns to show their hospitality. Festivities for mushers and spectators alike include pancake feeds, dog parades, banquets, carnivals, and snowshoe softball.

The Pedigree® brand actively supports a wide range of programs that promote responsible pet ownership and highlight the contributions dogs make to society.

The International Pedigree Stage Stop Sled Dog Race, the largest dog sled race in the lower 48 states, was founded in 1996 by Frank Teasley to make sled dog racing more accessible to the public. For a complete schedule, visit the race website at www.wyomingstagestop.org.

Kemmerer/Diamondville 2/5/2009 Day 6 53 Miles

Position Musher Finished	Bib #	Musher	Elapsed Time	Average MPH
1	14	Krista Halsnes	5:00:43	10.6
2	7	Melanie Shirilla	5:02:42	10.5

3	3	Ken Josefsen	5:04:22	10.4
4	4	Wendy Davis	5:05:50	10.4
5	18	Jeff King	5:09:00	10.3
6	15	Megan Routley	5:11:40	10.2
7	17	Debbie Moderow	5:16:15	10.1
8	6	Bruce Magnusson	5:19:49	9.9
9	9	Sam Perrino	5:21:58	9.9
10	1	Stacey Teasley	5:23:21	9.8
11	10	Jerry Bath	5:25:08	9.8
12	8	John Stewart	5:25:29	9.8
13	16	John Barron	5:36:35	9.4
14	13	Dennis Tremblay	5:38:45	9.4
15	12	Sean Hard	5:40:47	9.3
16	5	Grant Beck	5:55:19	8.9
17	11	Sandy Burke	5:57:19	8.9
18	2	Jean Wise	5:59:49	8.8
19	19	Dave DeCaro	6:10:11	8.6

OVERALL

Finish Position	Bib #	Musher	Day 2	Day 3	Day4	Day 5	Day 6
1	7	Melanie Shirilla	2:58:38	3:04:13	4:07:35	4:16:35	5:02:42
2	4	Wendy Davis	2:58:04	2:55:19	4:30:33	4:47:55	5:05:50
3	9	Sam Perrino	3:06:12	3:09:49	4:27:04	4:24:16	5:21:58
4	6	Bruce Magnusson	3:02:07	3:11:52	4:40:26	4:16:52	5:19:49
5	10	Jerry Bath	3:07:56	3:14:24	4:42:42	4:18:19	5:25:08
6	15	Megan Routley	3:07:53	3:04:45	4:35:42	5:02:14	5:11:40
7	1	Stacey Teasley	3:08:02	3:16:02	4:46:37	4:31:16	5:23:21
8	3	Ken Josefsen	3:16:53	3:22:48	4:48:49	4:39:16	5:04:22
9	5	Grant Beck	3:10:04	3:09:25	4:30:03	4:31:16	5:55:19
10	8	John Stewart	3:16:55	3:07:54	4:50:33	4:46:22	5:25:29
11	18	Jeff King	3:18:37	3:15:30	5:02:55	4:48:37	5:09:00
12	16	John Barron	3:19:04	3:12:20	4:44:16	4:49:35	5:36:35

13	17	Debbie Moderow	3:18:44	3:11:15	5:01:35	5:07:27	5:16:15
14	12	Sean Hard	3:21:08	3:03:15	5:11:05	4:48:14	5:40:47
15	11	Sandy Burke	3:06:21	3:11:37	5:04:25	4:48:30	5:57:19
16	13	Dennis Tremblay	3:18:27	3:06:52	4:52:47	5:20:09	5:38:45
17	14	Krista Halsnes	3:28:11	4:27:05	4:52:37	4:34:39	5:00:43
18	2	Jean Wise	3:40:26	3:25:23	5:16:10	5:15:03	5:59:49
19	19	Dave DeCaro	3:55:54	3:37:10	5:21:01	5:14:56	6:10:11

Bluegrass Music offered

The Red Desert Ramblers Bluegrass band will be performing at Sugarhouse BBQ company. 2207 South 700 East. Info-463-4800. 6:30-8:30. Free with dinner. Get there early as seats fill up fast!

Great Backyard Bird Count will soon be here

The Great Backyard Bird Count (GBBC) will soon be here. Make plans for the Great Backyard Bird Count February 13-16. Last year Utah birders reported 163 species on 481 checklists. The Layton, Wild Bird Center (www.wildbird.com/layton) is a sponsor and participant in the Great Backyard Bird Count.



You can count anywhere: in your backyard, local park, favorite birding spot, wherever! You can submit checklists for as many locations as you want, and can submit a new checklist for each location each day. Remember, the more checklists submitted, the more useful the data is for mapping bird abundance and distribution through time.

A recommended bird guide to help with bird identification for those who are at a beginning level is the

Backyard Birds of Utah by Utah author, Bill Fenimore (www.gibbs-Smith.com).

Participation in this citizen science project is free and the data collected enhances our knowledge of birds and trends within those species populations. Have fun out there and report your bird sightings during the count to www.birdcount.org.



Backcountry Awareness Week was started to help people realize that Utah has incredible areas in which to recreate. This beauty, however, must be enjoyed with the proper respect. The education needed to learn this respect is easily available by looking on the UAC website or checking out Snowbird's Backcountry Safety courses. The week highlights the great educators in Utah's mountains with chances to meet them and learn from them as well as a Benefit Dinner to support backcountry awareness programs.

Backcountry Awareness Benefit Dinner & Silent Auction

Friday, February 13th

- 5:30-9 p.m. in Cliff Lodge Ballroom, Snowbird Ski & Summer Resort
- 5:30-7 p.m. Silent Auction
- 7 p.m. Dinner
- 7:30-9:00 p.m. Presentation by Chris Waddell
- \$75.00 per person (Make reservation on web or call Teri Mumm @ (801) 933-2442)
- Purchase a table of 10 and receive 2 Snowbird Lift Tickets
- Live entertainment by "Stormy Mountain Boys"



Inspirational speaker Chris Waddell will chronicle how he overcame a life-changing college skiing accident to become the most decorated male skier in Paralympic history, as well as preview his historic attempt to be the first paraplegic to summit Kilimanjaro in March. Also a book signing by Bruce Tremper "Staying Alive in Avalanche Terrain."

[RSVP online for the Benefit Dinner](#)

Backcountry Awareness Clinics

Saturday, February 14th

1) Basic Avalanche Skills Clinic

9 a.m. – 11 a.m.

\$69.00 per person includes clinic, lunch and ski pass

Presenter: Wasatch Backcountry Rescue

Register at the Snowbird Activity Center 801-933-2147. Limited space available. Meet outside The Snowbird Activity Center at 8:45 a.m.

2) Intermediate Avalanche Skills Clinic

9 a.m. – 11 a.m.

\$69.00 per person includes clinic, lunch and ski pass

Presenter: Wasatch Backcountry Rescue

Register at the Snowbird Activity Center 801-933-2147. Limited space available.

Meet outside The Snowbird Activity Center at 8:45 a.m.

3) Beacon Contest

9 a.m. – 11 a.m.

\$69.00 per person includes clinic, lunch and ski pass

Presenter: Wasatch Backcountry
Rescue

Register at the Snowbird Activity
Center 801-933-2147. Limited space
available.

Meet outside The Snowbird Activity
Center at 8:45 a.m.

4) Basic Avalanche Skills Clinic

1 p.m. – 3 p.m.

\$69.00 per person includes clinic,
lunch and ski pass

Presenter: Wasatch Backcountry
Rescue

Register at the Snowbird Activity Center 801-933-2147. Limited space available.

Meet outside The Snowbird Activity Center at 12:45 p.m.

5) Intermediate Avalanche Skills Clinic

1 p.m. – 3 p.m.

\$69.00 per person includes clinic, lunch and ski pass

Presenter: Wasatch Backcountry Rescue



Register at the Snowbird Activity Center 801-933-2147. Limited space available.
Meet outside The Snowbird Activity Center at 12:45 p.m.

6) Beacon Contest

1 p.m. – 3 p.m.

\$69.00 per person includes clinic, lunch and ski pass

Presenter: Wasatch Backcountry Rescue

Register at the Snowbird Activity Center 801-933-2147. Limited space available.
Meet outside The Snowbird Activity Center at 12:45 p.m.

Andrew McLean presents “Steep”

Saturday, February 14th

- 4:30 p.m. – 6 p.m. presentation and raffle prizes
 - Tram Club, Snowbird Ski & Summer Resort
- *Private club for Members, Must be 21 years or older.

Sponsors for Backcountry Awareness Week:

- | | |
|-------------------------|-----------------------------|
| • Snowbird | Black Diamond |
| • Utah Avalanche Center | Wasatch Backcountry Rescue |
| • Backcountry.com | The King’s English Bookshop |

CAMP FLOYD STATE PARK TO HOST 19th CENTURY VALENTINE DANCE

Fairfield -- Take a step back in time to the 19th century with a social gathering at Camp Floyd State Park and Museum Friday, February 13 from 6 to 10 p.m. Held in the historic Fairfield Schoolhouse, participants learn 19th century dances including Duke of Kent’s Waltz and Oak Hill Quickstep.

Registration is required and the cost is \$20 per couple. This popular event is limited to 15 couples. Period attire is encouraged, but not required and refreshments will be served.

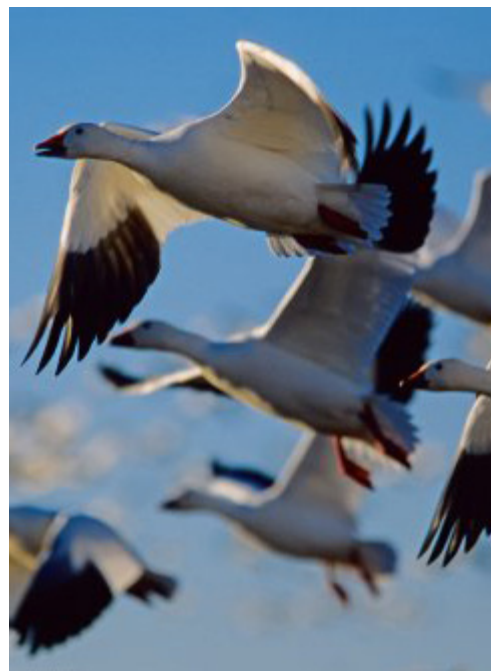
Camp Floyd State Park is located in the town of Fairfield, 22 miles southwest of Lehi on State Highway 73. For more information or to register, please contact the park at (801) 768-8932.

WATCH THE SKY TURN WHITE

See as many as 10,000 snow and Ross’ geese

Delta — It’s a sight you have to see to believe: thousands of pure white snow and Ross’ geese lifting off Gunnison Bend Reservoir amid honks and the beating of wings.

You can see this spectacle yourself on Feb. 20, 21 and 22 at the annual Utah Snow Goose Festival. The festival will be held at and near Gunnison Bend Reservoir, just west of Delta. Admission is free. As many as 10,000 geese have been at the reservoir during past festivals. Except for the black tips on their wings, snow geese are pure white. "We'll provide spotting scopes so you can get a close look at the geese," says Bob Walters, Watchable Wildlife coordinator for the Division of Wildlife Resources. "We'll also be happy to answer any questions you have." In addition to seeing the geese, you can learn more about wildlife at free seminars offered by the DWR. The seminars will be held on Saturday, Feb. 21. Exhibits featuring arts and crafts and photography also will be available on Feb. 21.



The best times to see the geese

The areas where you'll see the geese vary according to the time of the day. "If you arrive early in the morning, you can watch the geese feeding in fields that surround the reservoir. Then, at about 10:30 a.m., the geese take off and fly back to the reservoir. That's an exciting time to see and hear the geese," Walters says. After landing on the reservoir, the geese usually spend the next few hours there. "Then, anywhere from 4 to 6 p.m., they'll take off again and fly back to the fields," he says. "To really appreciate that experience, you have to be there to see it and hear it."

DWR biologists will watch which fields the geese fly to. If you arrive after the geese have



left the reservoir, the biologists will direct you to the fields where the geese are.

Viewing tips

- Use binoculars or a spotting scope to view the geese. If you get too close to the geese, you could scare them away.
- If you pull off the road to view

the geese, pull as far off the road as you can. And watch for cars.

- The weather conditions could be cold and wet. Bring the proper clothes so you stay warm and dry.

For more information about the 2009 Snow Goose Festival, call the Delta Area Chamber of Commerce at (435) 864-4316.

VOLUNTEERS NEEDED AT ANTELOPE ISLAND STATE PARK

Syracuse -- Antelope Island State Park staff needs talented people to volunteer at the historic Fielding Garr Ranch. Volunteers are needed to demonstrate unique crafts including adobe brick making, blacksmithing, basket making, and candle dipping. If you would like to share your time and talent, please contact Clay Shelley at (801) 649-5742 or clayshelley@utah.gov.

UTAH STATE PARKS SNOWMOBILE GROOMING REPORT

Please find below, current grooming conditions as of February 3. Utah State Parks encourages all riders to carry appropriate avalanche gear and get an avalanche advisory at 1-800-OHV-RIDE or www.utahavalanchecenter.org

BEAR RIVER
SERVICE/
WHITNEY –
No new report

BEAR LAKE/
LOGAN
CANYON–
Sinks, Amazon,
Beaver Creek,
Franklin Basin,
Tony Grove,
Garden City,
Temple, Swan
Flat

HARDWARE
RANCH –
Hardware
Ranch, Danish
Dugway, the
Gorge,



Strawberry, Elk Guard Station, Mill Hollow, Hell's Hollow

MONTE CRISTO - Ant Flat, Highway 39, Curtis Creek Loop, Arbs Basin, Wasatch Ridge

WASATCH – Alpine Loop, Snake Creek Canyon, Soldier Hollow

MIRROR LAKE/MILL HOLLOW – North Fork Trail, Soapstone Basin Road, Highway 35 from Nobletts to Hanna Trailhead, Wolf Creek Summit, Mill Hollow to Lake Creek Summit, Mirror Lake Highway, Soapstone to Nobletts, Highway 150 to warming hut, Highway 35

STRAWBERRY – No new report. NOTE: Sheep Creek is private property; day-use fee required

SCOFIELD COMPLEX – Fairview Trailhead, Fish Creek Ridge, Miller's Flat, White River, Joe's Valley, Pondtown



EPHRAIM – Snowcat under repair

MT. NEBO – Snowcat under repair

FISH LAKE – Snowcat under repair

CEDAR MOUNTAIN - Cedar Breaks, Brian Head, Lava Beds, Strawberry Point

UINTAH BASIN – No new report

Utah State Parks is the state off-highway vehicle authority, providing access, education, and search and rescue on Utah's trails.



Utah's own Cedar Mountain Wild Horse Adoption February 21, 2009

Photos are of the Cedar Mtn Wild Horses. Visit the facility to find your favorite!! Salt Lake Wild Horse & Burro Center 8605 W 12600 S Herriman, Utah. Offering over 450 wild horses from Utah's own beautifully colored Cedar Mountain Herd!! Featuring 120 yearlings
Gates open at 8am. Competitive bidding will begin at 9 am.
All bids will begin at \$125.



Once bidding has closed, then all horses will be available on a first come, first served basis for \$125. All qualified adopters may Adopt-a-Buddy for \$25 with the adoption of a full fee horse.

Viewing: Mon - Fri 9am-3pm For more information call 1-877-224-3956 or visit www.ut.blm.gov

Would like to teach kids how to fish?

Training of youth fishing club volunteer is scheduled to begin in February.

Want to help a group of kids have one of the best experiences they'll have this spring? Then volunteer to help a youth fishing club!

The Division of Wildlife Resources is looking for volunteers to teach 6- to 13-year-olds about fish, the places fish live and how to catch them. Volunteers are needed in communities stretching from Logan to Washington City. To learn more about the clubs, and to volunteer to help, visit the [community fishing pages](#) on this Web site.

Anyone can help

The number of kids who can participate in the clubs is tied directly to the number of adults who volunteer to help. If more adults volunteer to help, more children can participate. "If you want to help, but you don't know much about fishing, that's OK," says Chris Penne, community fisheries biologist for the DWR. "If you're a positive person, you're patient and

you have good communication skills, you have everything we're looking for. "We'll teach you all of the other skills you'll need to have a great experience with these kids."

Training

Most of the youth fishing clubs start in March and April. But a few begin as late as June. Most of the clubs meet once a week for six weeks. Each club session lasts about two hours. The children spend the first 30 minutes of each outing learning a new lesson or skill. After teaching the kids, adult volunteers take them down to the water and help the children use their skills to catch fish!

"The kids look to their fishing mentors as leaders, so it's important that volunteers attend every meeting of their fishing club," Penne says. Two to three weeks before a club's first meeting, DWR personnel will provide a volunteer training seminar in the fishing club's community. The training takes less than two hours to complete. Also, all volunteers must consent to and pass a criminal background check. "The DWR and the various communities are committed to keep children safe," Penne says.



Rewards

Penne says a number of rewards await those who volunteer. "One of the biggest thrills is watching a young boy or girl reel in their first fish. Seeing that is priceless," he says. "It's also rewarding to teach someone a skill they'll be able to use and enjoy the rest of their life. And getting these kids outside, so they can experience the natural world around them, is also very rewarding." If you have questions, please e-mail Penne at ChrisPenne@utah.gov.

A popular program

"We had a great turnout in 2008," Penne says. "About 1,500 kids and 270 volunteers participated. Many of the volunteers were folks who volunteered the year before. They had a great experience, and they wanted to help again." Penne says many of the city recreation departments in Utah have added fishing to the list of sports they offer to kids. That's one of the greatest reasons for the program's success. "For the first time, fishing has found its way into mainstream sports, right along with soccer, baseball and football," Penne says. The number of children and communities involved in the program is growing, and Penne says volunteers are needed more than ever before.

UPCOMING UTAH STATE PARKS EVENTS

February 14 Wasatch Mountain State Park - Midway
Nature Crafts: Join park staff at 10 a.m. in the visitor center to create homemade bird feeders. Learn about backyard birds and ways to attract them to your yard. Bring empty milk jugs, egg cartons, or soda bottles. (435) 654-1791

February 14 Jordanelle State Park - Heber
International Year of Astronomy: Join park staff from 10 a.m. to 2 p.m. for a look at spectacular views of the spiral galaxy Messier 101 obtained by the Hubble Space Telescope, Spitzer Space Telescope, and Chandra X-ray Observatory. There will be hands-on astronomy activities for the entire family! Before your visit, go online and find great information and an exciting video at www.astronomy2009.org. For more information, call (435) 649-9540 or (435) 782-3030.

February 16 Antelope Island State Park - Syracuse
Animals in Winter: During the long winter months, animals must learn to adapt to harsh conditions to survive. Join the park naturalist and learn more about these adaptations. Participants should meet at the visitor center at 1 p.m. (801) 721-9569

February 12 Utah Lake State Park - Provo
Weather Forecasting: Join Meteorologist Kevin Barjenbruch at 7 p.m. in the conference room for a discussion on sudden storms and weather information. Get valuable information you should know when planning a day on the water. (801) 375-0731

February 19 Utah Lake State Park - Provo
Identifying the Birds of Utah Lake: Join bird specialist Merrill Webb for a discussion on how to identify the birds living and migrating through Utah Lake. Meet at the conference room at 7 p.m. (801) 375-0731

Shirilla Posts Fastest Time in Day Four of IPSSSDR, Taking Overall Lead

Jackson, WY—February 3, 2009—Melanie Shirilla from Lincoln, Mont., posted the fastest time Day Four of the International Pedigree Stage Stop Sled Dog Race (IPSSSDR) with a time of 4:07:35. Sam Perrino from Yellowknife in Canada's Northwest Territories was second with a time of 4:27:04. Grant Beck, also from Yellowknife, came in third with a time of 4:30:03.



In overall positions, Shirilla moves into the lead with a cumulative time of 10:10:26. Wendy Davis of Lander, Wyo., is second with a time of 10:23:56; Perrino is third with 10:43:05.

On Wednesday, teams will race from Alpine up the Greys River Trail for Day Five before continuing to Kemmerer/Diamondville, Evanston, Lyman/Mountain View, and finally Park City, Utah, for the final stage and awards ceremony on Saturday, February 7.

With its unique dog-friendly "stage stop" racing format, the IPSSDR stops in a different community each night, allowing the host towns to show their hospitality. Festivities for mushers and spectators alike include pancake feeds, dog parades, banquets, carnivals, and snowshoe softball.



The Pedigree® brand actively supports a wide range of programs that promote responsible pet ownership and highlight the contributions dogs make to society.

The International Pedigree Stage Stop Sled Dog Race, the largest dog sled race in the lower 48 states, was founded in 1996 by Frank Teasley to make sled dog racing more accessible to the public. For a complete schedule, visit the race Website at www.wyomingstagestop.org, contact the race via e-mail at wystagestop@blissnet.com, or telephone at 307.734.1163.

Big Piney/ Marbleton

63 Miles**February 3, 2009**

Finish Position	Bib #	Musher	Elapsed Time	Average MPH
1	7	Melanie Shirilla	4:07:35	15.3
2	9	Sam Perrino	4:27:04	14.2
3	5	Grant Beck	4:30:03	14.0
4	4	Wendy Davis	4:30:33	14.0
5	15	Megan Routley	4:35:42	13.7
6	6	Bruce Magnusson	4:40:26	13.5
7	10	Jerry Bath	4:42:42	13.4
8	16	John Barron	4:44:16	13.3
9	1	Stacey Teasley	4:46:37	13.2
10	3	Ken Josefsen	4:48:49	13.1
11	8	John Stewart	4:50:33	13.0
12	14	Krista Halsnes	4:52:37	12.9
13	13	Dennis Tremblay	4:52:47	12.9
14	17	Debbie Moderow	5:01:35	12.5
15	18	Jeff King	5:02:55	12.5
16	11	Sandy Burke	5:04:25	12.4
17	12	Sean Hard	5:11:05	12.2
18	2	Jean Wise	5:16:10	12.0
19	19	Dave DeCaro	5:21:01	11.8

Overall Times

Finish Position	Bib #	Musher	Day 2	Day 3	Day 4	Overall Time
1	7	Melanie Shirilla	2:58:38	3:04:13	4:07:35	10:10:26
2	4	Wendy Davis	2:58:04	2:55:19	4:30:33	10:23:56
3	9	Sam Perrino	3:06:12	3:09:49	4:27:04	10:43:05
4	15	Megan Routley	3:07:53	3:04:45	4:35:42	10:48:20
5	5	Grant Beck	3:10:04	3:09:25	4:30:03	10:49:32
6	6	Bruce Magnusson	3:02:07	3:11:52	4:40:26	10:54:25

7	10	Jerry Bath	3:07:56	3:14:24	4:42:42	11:05:02
8	1	Stacey Teasley	3:08:02	3:16:02	4:46:37	11:10:41
9	8	John Stewart	3:16:55	3:07:54	4:50:33	11:15:22
10	16	John Barron	3:19:04	3:12:20	4:44:16	11:15:40
11	13	Dennis Tremblay	3:18:27	3:06:52	4:52:47	11:18:06
12	11	Sandy Burke	3:06:21	3:11:37	5:04:25	11:22:23
13	3	Ken Josefsen	3:16:53	3:22:48	4:48:49	11:28:30
14	17	Debbie Moderow	3:18:44	3:11:15	5:01:35	11:31:34
15	12	Sean Hard	3:21:08	3:03:15	5:11:05	11:35:28
16	18	Jeff King	3:18:37	3:15:30	5:02:55	11:37:02
17	2	Jean Wise	3:40:26	3:25:23	5:16:10	12:21:59
18	14	Krista Halsnes	3:28:11	4:27:05	4:52:37	12:47:53
19	19	Dave DeCaro	3:55:54	3:37:10	5:21:01	12:54:05



Uinta-Wasatch-Cache National Forests Reminds Winter Recreationists

To Be Safe This Winter

Salt Lake City, Utah, February 3, 2009 – Brian Ferebee, Uinta-Wasatch-Cache National Forest Supervisor would like to remind all winter recreationists to have a safe, fun filled season and to be extra careful while out in the woods. “Snowmobilers, skiers, snowboarders, snowshoers, and dog sleds all share the same trails at some point in time, so it is extremely important that all users respect each others rights to enjoy their recreation activity of choice” said Ferebee. Here are a few safety tips to practice this winter:

Be informed about avalanche dangers. Carry safety equipment such as avalanche



beacons, shovels and probes. Take an avalanche awareness class. Call the Avalanche Forecast Center for the most current and update information at 801-524-5304 or <http://www.utahavalanchecenter>.

Snowmobile users should always proper trail etiquette such as: Obey all trail signs. Slow down when meeting other users and oncoming snowmobile traffic. Pull to the right ride or just off the trail if you meet oncoming dog sleds. Stop before crossing highways. Stay to the right on curves and slow down. Make sure your snowmobile is legally registered. Never snowmobile in wilderness areas. Make sure you are riding on trails, roads or areas that are open to snowmobiles. You can pick up Winter Travel Maps at local Forest Service offices that will show you what trails, roads and areas are open for snowmobile use.

Skiers and snowshoers should always move to the side of the trail or just off the trail when you hear snowmobilers approaching. Please do not insist on the right-of-way, you



are no match for a snowmobile. Remember you are responsible for your own safety.

Always let someone know where you are recreating and the approximate time you will return home. Always have matches, water, food, extra clothing, flashlight, whistle, first-aid-kit, and a cell phone just in case the weather turns bad or in case of an emergency and you have to spend the night out in the woods. **BE PREPARED FOR ANYTHING!**

Remember that alcohol and winter sports don't mix. Always stay alert on trails, know your limits for whatever form of winter recreation you choose to enjoy. Respect the rights of other users and the National Forest you are recreating on.

Quagga mussels found in Red Fleet Reservoir

The DWR continues to receive test results on other Utah waters.

Laboratories in Colorado are still testing water samples taken from 38 lakes and reservoirs in Utah in 2008.

The propeller on this boat motor at Lake Mead is covered with quagga mussels.

Photo by Natalie Muth

The lab workers are searching for tiny, destructive organisms called quagga mussels and zebra mussels.

Their testing is almost done. And so far, the results the Division of Wildlife Resources has received are encouraging — most of the waters tested do not appear to have mussels in them.

Mussels found in two waters



Mussels have turned up in two waters, however — Electric Lake, in central Utah, and another water just added to the list, Red Fleet Reservoir. Red Fleet is about seven miles north of Vernal.

"So far, all of the mussels found have been very small juveniles," says Walt Donaldson, Aquatic Section chief for the DWR. "That's a sign that the mussels may not be well established in these two waters yet."

Learn more

You can learn more about mussels — including the damage they can do and what you can do to prevent spreading them—at the [DWR's new mussel Web site](http://wildlife.utah.gov/mussels).
<http://wildlife.utah.gov/mussels>

Earthquake Conference to Kick Off in Salt Lake City February 11, 2009

On Wednesday evening, February 11th, the Earthquake Engineering Research Institute (EERI) and the Western States Seismic Policy Council (WSSPC) will open a joint Annual Meeting at the Hilton Salt Lake City Center Hotel. The conference will feature three days of technical sessions in which the nation's foremost earthquake engineers, scientists, emergency planners, and policy experts will discuss approaches to earthquake risk reduction, including a number of voluntary programs that have proven effective in reducing earthquake risk.

EERI's Special Recognition Award will go to the State of Utah for the State Capitol Seismic Retrofit Project. The award will be accepted on Thursday morning, February 12th, by Salt Lake City Mayor Ralph Becker Jr., David Hart of the Capitol Preservation Board, and representatives from the two engineering firms involved in the project, Reaveley Engineers of Salt Lake City, Utah and Forell/Elsesser Engineers of San Francisco, California.

On Friday evening, February 13th, the 2009 WSSPC Awards in Excellence will be conferred on five programs aimed at reducing tsunami and seismic risk in Alaska,

California, Washington, and Utah. These awards are given each year to recognize



achievement in earthquake mitigation, preparedness and response. John Parrish, California State Geologist and WSSPC Chairman, noted “the awards have been an effective method for sharing model programs and products throughout the western US....” Among this year’s awards, WSSPC will recognize the Utah Geological Survey for new paleoseismic research on the Wasatch and Sevier Faults. Information on all the Awards in Excellence is available at: <http://www.wsspc.org/Awards/2009>.

A series of special lectures will complement the general sessions. Norman Abrahamson, Senior Engineering Seismologist, Pacific Gas & Electric Company, will give the 2009 EERI Distinguished Lecture on “The State of Practice of Seismic Hazard Analysis: From the Good to the Bad.” Abrahamson’s work focuses on ground motion and seismic hazard

assessments for dams, bridges, nuclear power plants, nuclear waste repositories, and other critical facilities and lifelines. Robin McGuire, founder of Risk Engineering of Boulder, Colorado, will discuss “Earthquakes, Seismic Hazard, and Performance-Based Design” in this year’s prestigious Joyner Memorial Lecture at the luncheon on Saturday, February 14th.

The program promises to come to an *earthshaking* finale with the announcement Saturday afternoon of the winning team in the National Undergraduate Seismic Design Competition held in conjunction with the conference and open to all attendees. The best of the next

generation of earthquake engineers will come from 18 universities throughout the US to compete in Salt Lake City.



The Earthquake Engineering Research Institute is a professional association with members from all the disciplines and professions in the earthquake field. They share a mission to reduce earthquake risk by 1) advancing the science and practice of earthquake engineering, 2) improving understanding of the impact of earthquakes on the physical,

social, economic, political, and cultural environment, and 3) advocating comprehensive and realistic measures for reducing the harmful effects of earthquakes.

The Western States Seismic Policy Council is a non-profit earthquake consortium located in Sacramento, California (www.wsspc.org). WSSPC is dedicated to developing seismic policies and disseminating information about programs to reduce earthquake-related losses.

For more information or to obtain a press pass, contact the Hilton Salt Lake City Center Hotel (801-328 2000) and ask for the EERI/WSSPC registration desk beginning Wednesday, February 11th.

February Fishing Report

BEAR LAKE: (February 03) Biologist Scott Tolentino reports that the cisco are still running at Cisco Beach. This year was unique in that the run was rather spotty. Some days the fish are "in," but others they are few in numbers. In most years, the run typically winds down by Feb. 1, but this year the run started late and, judging by the number of cisco still spawning, will continue for a few more days. The open water conditions this year have

been tough too. If the wind is blowing the cisco will move away from the shore, whereas on calm days they are right along the water's edge.

Whitefish fishing has improved, while cutthroat and lake trout fishing has tapered off. Last weekend some anglers caught good numbers of whitefish off the rockpile. Other anglers did very well fishing the weed beds south of Gus Rich Point and off the pump house. Some cutthroat trout were also taken, but the fishing will not improve for another week or so because most cutthroat are stuffed with cisco right now. Launching boats in the state park marina is day-to-day. There is some ice, but the lake is mostly open water. The ramp at Cisco Beach is open and launching is available, but there is no courtesy dock in the water at this time.



BIRCH CREEK RESERVOIR: (January 20) Conservation Officer Casey McVay reports little pressure, but those who do venture out are landing a fish or two on average.

EAST CANYON RESERVOIR & STATE PARK: (February 03) Conservation Officer Jonathan Moser reports that one group of anglers had great success, with all the kids catching their limit. They used a kastmaster as an attractor and a glow ratfinky tipped with raw salad shrimp. Try dipping the ratfinky with a little crawfish smelly jelly. Most hits happened 15 to 20 feet deep in 30 to 40 feet of water. Other setups (wax worms and PowerBait) produced fair results. The ice is 8 to 10 inches thick.

ECHO RESERVOIR: (January 28) Dedicated Hunter Cody Gaskill reports fair success and that the ice is about 14 inches thick. Anglers were fishing right in the middle of the lake through 15 inches of ice, in about 30 to 35 feet of water. Try using a pink ice cutter and moving the pole up and down every five minutes.

HYRUM RESERVOIR & STATE PARK: (February 03) Dedicated Hunter Chris Grenda interviewed a few anglers and reports that slow success catching perch using ice fly jigs with meal worms

LOGAN RIVER: (February 03) Dedicated Hunter Chris Grenda interviewed an angler who had caught seven rainbows at second dam. All of the fish were around 10 inches. The angler was using a pheasant tail with a small sinker on the bottom. He caught most of his fish on a #18 black pheasant tail.

LOST CREEK RESERVOIR: (February 03) Conservation Officer Jonathan Moser reports slow fishing, although one group reported great success. Try a Kastmaster or Swedish pimple as an attractor and a ratfinky with a wax worm as bait. Fish are hitting very

lightly, so diligence is the key. Most hits were approximately five feet from the bottom in 40 feet of water. The ice was 8 to 10 inches thick.



**MANTUA
RESERVOIR:**

(February 03)
Conservation Officer
Matt Burgess reports
good fishing for
bluegill, perch and
some trout.

**PINEVIEW
RESERVOIR:**

(February 03) Mike
Bolinski reports that,
as of Jan. 30, there was
12 inches of ice
covering Pineview.
The standing water and
slush from last week's

rain has refrozen. Fishing pressure is heaviest on the north side of Cemetery Point and Browning Point. Very few anglers are targeting fish in the Narrows because of the slow fishing conditions.

Anglers using fish finders or underwater cameras are marking fish, but most report slow fishing. Black crappie action is still extremely slow. Yellow perch action is moderate. The most successful anglers were those willing to move around and find the active fish. Stationary anglers will have limited success.

Try using a combination of lures and bait, including assorted jig colors and ice flies tipped with a meal worm, wax worm, perch meat or perch eye ball. Some anglers used a combination of 1/8 or 1/4 ounce Kastmaster blade, Swedish Pimple or similar hardware, with a jig or ice fly as a dropper tipped with meal or wax worms. Anglers fishing in water 28 feet or deeper had the most success.

The average catch rates from Jan. 27 to Jan. 30 were approximately 0.67 fish per angler per day (min=zero, max=22), with a 100% harvest rate. On average, anglers caught 1.24 yellow perch per day and 0.11 black crappie per day. The average length of all harvested yellow perch was 8.03 inches (min=6.35 inches, max=9.96 inches). The average length of all harvested black crappie was 10.23 inches (min= 9.13 inches, max= 11.19 inches).

ROCKPORT RESERVOIR: (February 03) Joseph Donnell reports good fishing for rainbowsat the south end of the lake in shallow water. The morning hours seem to be best.

Perch fishing is slow with only a few reports of perch being caught. The ice is 10 to 13 inches thick.



WEBER RIVER:

(February 03) Biologist Paul Thompson reports low flows, which makes fishing difficult from Echo Dam to Lost Creek. Expect typical wintertime trout and whitefish fishing in the rest of the Weber.

WILLARD BAY

RESERVOIR: (January 28) Dedicated Hunter Cody Gaskill reports the ice is about 15 feet away from the shorelines. No anglers were fishing.

DEER CREEK

RESERVOIR: (January 31) Anglers are reporting some weak ice around the edges. Please be very careful when getting onto

the ice! Recent cold temperatures might help the situation a bit but rising water always makes edges tricky. Bring a plank to be safe and look for areas where anglers are accessing the ice. Success has been slow to fair for trout.

STRAWBERRY RESERVOIR: (January 31) Strawberry seems to have the thickest and most safe ice in the region. Use caution if taking any vehicle onto the ice. Several reports indicate at least fair success for mostly cutts in the slot limit.

JORDANELLE RESERVOIR: (January 31) Success for trout has been reported as fair to good. Anglers prefer venturing onto the ice on the Rock Cliff arm, but always use caution and check ice for safety. If you don't get bites along the bottom try fishing for suspended fish.

UTAH LAKE: (January 31) Still getting reports of ice fishing. Ice thickness can fluctuate but most anglers report decent thickness of ice. Anglers have been reporting slow to fair success for white bass, blue gill & crappie.

SPANISH OAKS RESERVOIR: (January 20) The reservoir is closed for the season.

SALEM POND: (January 31) Anglers report slow success for trout and catfish using traditional baits. The park closes at 10 p.m. every night.



PROVO RIVER, LOWER:
(January 31) Anglers report fair to good success when using small nymphs. There's only light fishing pressure due to cold weather.

PROVO RIVER, MIDDLE:
(January 31) Anglers report fair to good success when using small nymphs. There's only light fishing pressure due to cold weather.

SPRING LAKE: (January 31) Slow success for trout.

BURRASTON PONDS: (January 31) No report this week, but anticipate slow to fair success.

GRANTSVILLE RESERVOIR:
(January 20) Grantsville ice anglers reported ice depths of four inches on the northeast side but said fishing success was slow.

PAYSON LAKES: (January 31) Canyon-access gates are closed.

YUBA STATE PARK: (January 31) Many anglers report scary patches of weak ice including weak ice around the edges. Success has varied; most anglers report slow success (including myself) but others are still catching a limit of perch. It usually takes at least 3 hours to get a limit of perch if you are lucky. For more information on ice conditions, call the State Park at (435) 758-2611.

Smaller lakes, reservoirs & ponds

SALT LAKE COMMUNITY WATERS: Light fishing pressure wherever open water is found. Please, stay off the ice!

SPANISH OAKS RESERVOIR: The reservoir is closed for the season.

SPRING LAKE: Anglers report slow success for trout.

TIBBLE FORK RESERVOIR: (January 31) Tibble Fork has several warm springs that create pockets of thin ice. Ice fishing here may be dangerous and is not recommended.

VERNON, GRANTSVILLE & SETTLEMENT CANYON RESERVOIR (TOOELE CO.): No report on these waters this week.

AMERICAN FORK RIVER: Light fishing pressure, and fair success with worms or small flies.

DIAMOND FORK RIVER: Conditions are snowy, and there's light fishing pressure. You'll have fair success with small flies or traditional baits.

HOBBLE CREEK & CATCH BASIN: Conditions are snowy, and there aren't many areas to park.

PROVO RIVER: Anglers report fair to good success when they use small nymphs. There's light fishing pressure due to cold weather. Read the [2009 Fishing Guidebook](#) to learn more about the different regulations on the river. Some areas allow bait and others do not. And some stretches have size restrictions and reduced limits (like "two brown trout under 15 inches").



THISTLE CREEK: You'll find snowy conditions with light fishing pressure. You can expect fair success with flies, lures or worms under current conditions.

Brooks-Range Mountaineering Equipment (www.brooks-range.com) provides innovative, top-quality gear for alpinists and backcountry travelers alike. Tested by some of the world's top mountaineering, avalanche and backcountry professionals, here are a few new products that are sure to impress your friends while “roughing it” in the snow this season.

DUCK FORK RESERVOIR: (February 05) This reservoir is inaccessible, except by snow machine.

ELECTRIC LAKE: (February 05) Use extreme caution, especially on the north end.

FERRON RESERVOIR: (February 05) The reservoir is inaccessible, except by snow machine.

HUNTINGTON NORTH RESERVOIR: (February 05) The ice is melting around the edges. Use extreme caution.

HUNTINGTON RESERVOIR: (February 05) Access difficulties due to deep snow and excessive ice thickness combine to discourage angler use.

JOES VALLEY RESERVOIR: (February 05) Fishing success has fluctuated between slow and good. Fishing has been best near the Lowry Water inlet. The best lure/bait combination has consisted of a jig tipped with chub meat.



LOWER FISH CREEK: (February 05) Most fish range between 10–11 inches. The creek has very limited open water for fishing. Best success will be had with fly fishing tackle. Best patterns are: beadhead hares ear, beadhead prince nymph, and San Juan worm.

MILLSITE STATE PARK:
(February 05) Angler success has been highly variable.

RIGHT FORK OF HUNTINGTON CREEK: (February 05) Fly fishermen will have the best success in open water stretches, using patterns such as: beadhead prince nymph, beadhead hares ear, and San Juan worm.

SCOFIELD RESERVOIR: (February 05) Angler success has been unusually poor.

STRAIGHT CANYON CREEK: (February 05) Adventurous fly fishermen will have the best success with typical winter-time wet fly patterns. Use extreme caution, due to icy rocks and treacherous slopes.

WILLOW LAKE: (February 05) Access is limited to snow machine or ATV.

WRIGLEY SPRINGS RESERVOIR: (February 05) Access will be limited to OHV, due to snow and mud.

BIG SANDWASH RESERVOIR: (February 04) Anglers report fair to good fishing near the boat ramp for up to 16-inch rainbows. Check the ice carefully before venturing out.

BROUGH RESERVOIR: (January 28) No new reports from anglers. The reservoir has ice. Check it before venturing out. The road to Brough is snow covered and can be quite rutted.

BROWNE LAKE: (February 04) Anglers report fair to good ice fishing. Check the ice carefully before venturing out. The road gates are closed.

BULLOCK RESERVOIR: (February 04) The reservoir has ice, but there haven't been any recent reports from anglers. Check ice conditions carefully before venturing out.



**CALDER
RESERVOIR:**

(February 04) The reservoir has good ice, and anglers have been using snowmobiles and four-wheelers to access the area. Reports indicate slow to fair ice fishing. Check the ice before venturing out.

**COTTONWOOD
RESERVOIR:**

(February 04) The reservoir has ice, but there haven't been any recent reports from anglers. Check ice

conditions carefully before venturing out.

CROUSE RESERVOIR: (February 04) The reservoir has good ice, and anglers have been using snowmobiles and four-wheelers to access the area. Reports indicate slow to fair ice fishing. Check the ice before venturing out.

CURRENT CREEK RESERVOIR: (February 04) Anglers report 12 to 18 inches of ice, depending on where they placed holes. Fishing has been spotty by the dam, even though fish were visible in the fish finders. Anglers who walked farther had better success, but the fish still weren't consistently active. You'll have to travel through snow and ice to access the dam. The road to the dam is maintained regularly, but at this time of year, a storm can quickly make roads treacherous and impassable.

EAST PARK RESERVOIR: (January 28) East Park Reservoir is ice covered, with no new reports of ice fishing success. Winter road gates have been closed, so access is now by skis or snowmobile.

FLAMING GORGE: (February 04) All Utah boat ramps remain open, but this can vary each day. For example, a sheet of roughly 20 feet of ice formed off Antelope, but then winds cleared it within a couple of days. Watch for free-floating ice sheets on the Utah side

of the reservoir. In Wyoming, check the ice carefully as anglers report a wide range of ice thickness. In general, ice has formed from the river arms down past Marsh Creek. The southern ice is irregular, however. In two separate reports, anglers who fished the southern ice drilled holes in eight or more inches of ice. Then, they took a few steps and realized the ice had changed, so they drilled again to find only three inches below them. Water temperatures remain in the mid to upper 30s in the lower end of the reservoir. Note the regulation changes for ice fishing and spearfishing for the Utah portion of the reservoir as of Jan. 1. See the [Utah Fishing Guidebook](#) for details.



Lake trout: Anglers report good fishing for 12- to 24-inch lake trout in the Canyon, Antelope and Lucerne areas. Try points next to deep water in Sheep Creek, Red Canyon, the Skull Creeks, Jarvies Canyon and in the Antelope Flat/Lucerne area. Fish are scattered from 50 to 120 feet, with most in the 80- to 100-foot range. Smaller fish are suspending off the bottom while feeding on zooplankton. If you are jigging, try tube jigs in white, chartreuse, glow or brown. Tipping your lure with a small chunk of sucker or chub meat may increase interest. Airplane jigs and jigging spoons are also working well. Using no-stretch line will help you feel strikes and set the hook better. Use a graph to see where fish are located and place the jig at the same depth. When trolling, check your graphs and use downriggers to get lures like needlefish, other spoons and Rapalas down near the bottom.

Long-lining near the surface—with small or large fish-imitating lures—may produce large fish that have spawned and are trying to fatten up on prey fish close to the surface. Let out a couple hundred feet of line behind the boat or use planer boards to get lures out to the side of the boat.

Kokanee salmon: Fishing for kokanee is typically slow this time of year. Try around Buckboard, Big Bend, Pipeline, Sheep Creek and Jarvies Canyon. You can find fish throughout the water column, so try a range of depths. Downriggers, long-lining, lead weights and planer boards can get the small spoons (like needlefish, triple teasers or other erratic-moving lures) down to the right depths. Try trolling at speeds from 1.5 to 2.5 miles per hour. If you are ice fishing, watch for schools of fish on the graph and try to put jigging spoons like Crocodiles and Kastmasters in front of them.

Rainbow trout: Boat fishing is good in Utah, and ice fishing is good in Wyoming. There have been reports of larger fish (in the four-pound range) being taken as well as fish in the 12- to 18-inch range. If you are ice fishing, look for fish from 10 to 30 feet deep and use typical rainbow gear. If you are fishing from a boat or shore, try casting lures or baits like a



worm/marshmallow combination or PowerBait. Fish can be deep or shallow, so try different depths. Don't be afraid of harvesting some rainbows. They are really tasty from the cold waters of the Gorge.

Burbot: Anglers report good fishing with jigs in 20 to 40 feet of water over areas with a rocky or shale bottom. Try fishing at night or early in the morning off the points in areas like Antelope Flat, Linwood Bay or Sheep Creek in Utah (with boats) and Firehole, Lost Dog, Sage Creek, Confluence, Buckboard, Holmes Crossing, Anvil Draw, Skunk Cliffs and Marsh Creek in Wyoming (ice fishing). Use glow tube or curly tail jigs that are two to three inches in size and about 1/8 to 1/4 ounce in weight.

Lures that glow (like jigging spoons and jigging Rapalas) also work well. Tipping your

lures with sucker or crayfish meat and using smelly jelly or similar scents in crayfish also seems to help. Make sure you recharge your glow lures often. During the day, these fish will move deep (70–100 feet), so jigging in deep water may produce better daytime success. Anglers can now use up to six lines to fish through the ice on the Utah portion of the reservoir. Anglers will not need a two-pole permit to fish with more than one line.



Please see the [Utah Fishing Guidebook](#) for more details.

Smallmouth bass:

Smallmouth fishing is typically slow during the winter months. Try fishing the rocky areas where crayfish will be and adjust depth until you find the fish, likely 20 or more feet down.

Crayfish-colored grubs on leadhead jigs or small plastic worms, senkos, twitch and crankbaits may work if you can get the lure right in front of the fish. If you're fishing in the canyon, keep a limit of 10 fish smaller than 10 inches to help thin out the population and increase growth on the remaining fish.

GREEN RIVER BELOW FLAMING GORGE DAM: (February 04) Daily flows on the river are changing to 1,100 for February. The double-peaking flows requested by Western Power Administration will continue. Try fishing scuds, egg patterns and attractor nymphs during periods when no hatches are occurring. Watch for midge hatches to occur during the warmer parts of the day. Streamer fishing is a good technique to use during the winter months. Spin fishermen should try Rapalas (floating, countdown and husky jerk); spinners; spoons; black, brown or olive marabou jigs; and plastic jigs.

MATT WARNER: (February 04) The reservoir is ice-covered, and anglers have been getting in on snow machines. One angler reported fair fishing through the ice.

MOOSE POND: (February 04) The Moose Pond is now being refilled, and the surface is frozen. The pond was drained in 2008 to make some needed enhancements. If everything goes as planned, the pond should be ready and stocked by early summer of 2009.

PELICAN LAKE: (February 04) Pelican Lake is frozen, and the ice is over a foot thick. Anglers report fast fishing for bluegill. Largemouth bass fishing has started to slow down, but you can still find some good spots. Check the ice conditions carefully, especially around the edges as the reservoir is being filled.

RED FLEET RESERVOIR: (February 04) Anglers report fair to good success rates. Most fish are in the 12-inch range, but there are a few larger rainbows, too. Fish seem to be either near the bottom or about 15 feet down. The ice is generally over a foot thick except for the edges. The reservoir is filling, so check the ice edges carefully before venturing out. **Red Fleet Reservoir has tested positive for quagga mussels. [Learn more about these destructive mussels](#) and [how to decontaminate your boat](#).**

STARVATION RESERVOIR: (February 04) The main channel has frozen and thawed multiple times this winter. Consider all of the ice unsafe. If you do venture out, check it



very carefully.

STEINAKER RESERVOIR: (February 04) Anglers report fair to good ice fishing for rainbows. Last weekend, there was new ice near the shore and more than 12 inches a few feet further out. It may still be thinner in the middle. Check the ice—especially the edges—carefully before venturing out.

Avalanche Tools for Winter Recreationists

Brooks-Range Fixed Blade Saw – This new saw is ideal for building shelters, isolating Rutschblocks, and cutting cornices in the snow. It is lightweight and has aggressive saw teeth for the toughest jobs. The 22" (55 cm) saw is made of high-quality anodized aluminum. The rubber-coated handle can be connected to the Brooks-Range Backcountry Shovel shaft as well as telescoping ski poles to increase the reach to more than 5" (2 m). The saw features offset blade teeth which cut a ¼" (6 mm) wide slot in the snow, which prevents the blade from binding and freezing while sawing. MSRP: \$24.00



Brooks-Range Folding Saw - This 18" (46 cm) saw folds to 11" (28 cm), is made of high-quality aluminum, and easily attaches to the telescoping Brooks-Range Shovel shafts, ski poles, ice axes and just about anything else for extending its reach. The Folding Saw has a rubber coated handle and can be used for cutting wood or snow, avalanche science work, or winter shelter building. This saw is ideal for backpackers because it is packable, lightweight, and features aggressive saw teeth for the toughest jobs. MSRP: \$49.00



Snow Crystal Card – This snow safety tool will help adventurers make informed decisions about the snowpack. The card is printed with information on snow crystal types; is sized to easily fit in a field book, pocket or snow study kit; and is made from textured aluminum that preserves the shape of the snow crystal during analysis. The card also doubles as an inclinometer by using the attached string and weight. The Snow Crystal Card has a laser-etched 1 mm, 2 mm and 3 mm grid, inclinometer increments of 1°, crystal and snowpit "prompt legends," and a

standard/metric ruler. MSRP: \$9.95

CozyTraveler supports the Military

Phoenix, AZ (PRWeb) January 28, 2008 – As of December 2008, CozyTraveler travel accessories are available to military personnel. CozyTraveler products are a new addition to

the military exchange on base (often known as the PX, BX, etc. depending on the military branch) where military personnel and their families go to procure personal necessities from groceries to medicine to glasses to clothing.

The CozyTraveler (www.cozytraveler.com) offers relief from the constant lack of sleep or uncomfortable, restless sleep that plagues many in the military throughout long flights



and/or road trips. The travel accessory offers the benefit of a comfortable head rest, a resting place for arms, and the added benefit of being easy to use and extremely portable.

Everyone who has traveled has found that there just isn't always a place to be even when you've purchased a seat; shoulder to shoulder accommodations are definitely not effective sleeping quarters. But no one knows how to rough it like the military when it comes to traveling without any extra comforts. There are no headrests. There are no pillows. Often...there aren't even any cushions; just benches.

One soldier suggested, "Traveling with the military is a lot like everything else about the military...it's just more intense." He was the recent recipient of a CozyTraveler (thanks to his wife who wanted to make him as comfortable as possible as often as possible while he was away from her on his third deployment to Iraq).

Save Money by Springing to Utah

SALT LAKE CITY, UTAH- Spring is just around the corner and many Utah ski resorts are offering great savings for savvy spring snowriders. Enjoy impeccable snow conditions, sunny skies and entertaining après with the following package deals and events:

THE ALTA LODGE

-Kids ages 18 and under stay free April 12-19, 2009 at the Alta Lodge. With a reservation for a minimum of four nights, two kids stay in their parents' room at no additional charge. Full breakfast and four-course dinner are also included daily at no charge. With two kids, this is a savings of over \$200 per night. In addition to this value for families, Alta Lodge offers a free supervised Kids' Program with activities after skiing, a special kids' dinner, after dinner activities and shuttle service to and from the Alta Ski Area Children's Ski School, which also has a full-time day care service for non-skiing children. For more information, visit www.altalodge.com, or call 800-707-2582 for reservations.

BRIGHTON SKI RESORT

-Brighton has a new deal with Maverik convenience stores. Pick up a Maverik Adventure Card, bring it to the Brighton ticket window any Thursday and receive a HALF PRICE Twilight ticket (12:30 p.m.-9 p.m.). That's eight hours of skiing for just \$29! Limit one Maverik card per ticket. Valid for Twilight tickets only. Brighton is open for night skiing mid December through the end of March. Call (801) 532-4731 for details.

THE CANYONS RESORT SECOND ANNUAL SPRING GRUV

-Join The Canyons for a week of events, concerts, and contests! Spring Gruv kicks-off March 28 with the ever hilarious Pond Skimming event. Contestants in elaborate costumes attempt to ski or snowboard across a 100-foot pond much to the enjoyment of spectators.



In addition, The Canyons will host the Canis Lupus Challenge a 1/2 mile-long gully that serves up banked walls and whoop-de-dooos which often throw racers out of the track.

Contestants tackle the difficult course for the best time in their division.

On April Fool's Day visitors are invited to don their best '80s apparel and enjoy a host of free outdoor concerts. Spring Gruv will run from March 27 to April 5, 2009. Check out www.springgruv.com for more details.

DEER VALLEY RESORT

Goldener Hirsch Inn

-Stay two nights (or more) at the Goldener Hirsch Inn and receive two single day lift passes to Deer Valley Resort per person. Daily European breakfast buffet included. Valid March 29 to April 12, 2009. Two person minimum charge per room required.

Lobby Bedroom from \$209 per person

Deluxe Bedroom from \$258 per person

Suite from \$303 per person

Deluxe Suite from \$333 per person

Grand Suite from \$363 per person

For more information visit www.goldenerhirschinn.com.



Stein Eriksen Lodge

-Stay three nights and enjoy the fourth night free: The special offer is valid when you stay at Stein's beginning February 22, 2009 and check-out by Friday, March 6, 2009. Rate includes full buffet breakfast and a coupon for 20 percent off any treatment at The Spa at Stein Eriksen Lodge. Not available for all room types. Limited number of rooms available on this special promotion, especially over weekends. Prices do not include taxes or service charges. May not be combined with any other offer or applied to existing reservations. Not offered to groups of 10 or more rooms. Other restrictions may apply.

-Bronze Ski Package: Cut through freshly fallen powder or bask in the warm spring sun while enjoying significant savings with the Bronze Ski Package. The package includes deluxe room accommodations, daily buffet breakfast, taxes and one adult lift ticket per person to Deer Valley Resort. Additional nights may be purchased and a two-night minimum stay is required. The package is valid from March 29 through April 11, 2009 for \$276 per person, per night, based on double occupancy. A two-night minimum stay is required and lift tickets are non-refundable. This winter package at Stein Eriksen Lodge is subject to availability and prices are per person, per night, based on double occupancy, and include all applicable taxes.

To book reservations online visit www.steinlodge.com or call 800-453-1302.

PARK CITY MOUNTAIN RESORT

Book NOW and receive a free night's lodging!

-For a limited time, selected lodging properties can be booked with a free night. Third night free is applicable Jan.25 through Feb. 28 and Mar. 22 - April 12, 2009. Fourth night free is applicable Mar. 1-21, 2009. Discounted lift tickets, ski rentals, airport transportation and even airfare available. Call 800-331-3178 for more information.

SNOWBIRD SKI & SUMMER RESORT

-Ski Free at Snowbird this spring from \$135/day, based on double occupancy. This includes two free lift tickets with lodging purchase. In addition to fabulous spring conditions, Snowbird will also host a series of entertaining events including the U.S. Freeskiing Nationals (big mountain skiing competition), March 11-14, and the North American Gelände Championships, April 17-19. For more information visit www.snowbird.com.

SOLITUDE MOUNTAIN RESORT

Stay 3 nights & get the 4th free!

-Book 3 nights in a quaint Solitude condo and get the fourth night free. The deal gets even sweeter with 15 percent off of a massage treatment at the Spa at Solitude and 20 percent off adult lift passes! Available March 1- April 12. All promotions subject to availability, some restrictions may apply. This promotion is only valid on NEW bookings.

Spring Skiing Bed & Breakfast Special

-Enjoy three nights at the Inn at Solitude and two days on the mountain, plus a hearty breakfast at St. Bernard's before heading out on the hill.

The Inn offers ski-in/ski-out convenience, plus all the amenities of the Solitude Village, starting at \$287/per night/double occupancy/ three night minimum. Valid April 1-12, 2009. Based on availability and double occupancy. Some restrictions may apply. Village View Room, upgrades available. For more information visit www.skisolitude.com

THE UTAH OLYMPIC PARK

Purchase any Utah Olympic Park Winter Activity Package, Xtreme zipline ride or Olympic Tour, and receive a \$50 discount off a SAME DAY Comet Bobsled ride.

Race up to 80 miles per hour on the Comet Winter Bobsled.

Passengers will experience five G's of force and the equivalent of a 40-story drop in just under a minute in a real bobsled. Our experienced pilots take three passengers on a thrilling ride down the entire length of the 2002 Olympic bobsled track. Ages 16 and older, no

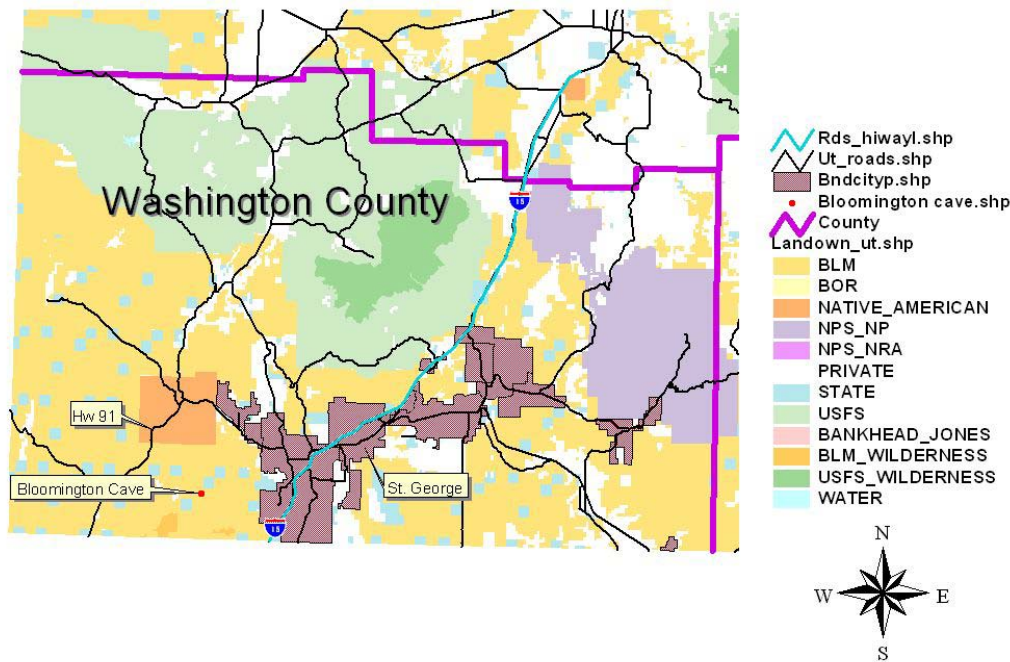


exceptions. All riders should be in good health to ride. Advance reservations for the Comet are required. Please visit www.olymparks.com or call (435) 658-4200 for more information.

For more information on Ski Utah and the state's 13 incredible resorts visit www.SkiUtah.com or call 800-SKI-UTAH (800-754-8824).

BLM Bloomington Cave Management Plan public comment period open until February 25, 2009

Bloomington Cave Location Map



St. George, UT— Located near St. George, Utah, Bloomington Cave is a popular recreational destination for Washington County and northern Utah residents as well as caving enthusiasts from across the United States. With more than a mile of complex passages, the cave's terrain

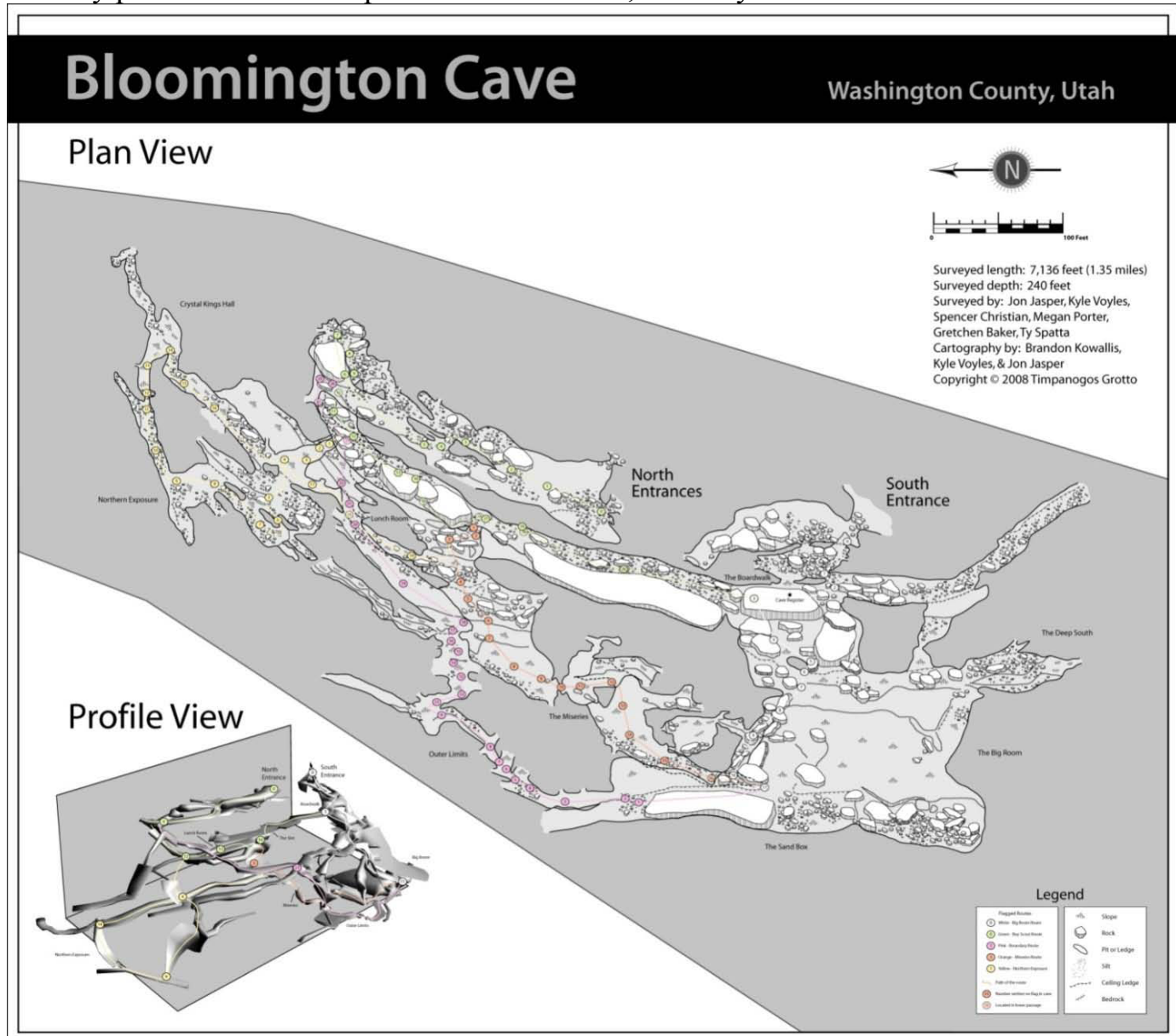
requires both appropriate equipment and the technical caving skills to navigate and explore safely.

In addition to its recreational allure, Bloomington Cave also possesses highly valuable and unusual geologic formations and provides habitat for several bat species, reptiles, insects, and other unique and delicate cave-dwelling life forms. Unfortunately, many of these geological and biological resources have been degraded by vandalism, graffiti, campfires and littering in recent years.

“In order to provide protection for species and geologic features and enhance visitor preparedness to safely explore Bloomington Cave, we are proposing actions that will better manage recreational uses and educate the public about cave resources,” said Jimmy Tyree, manager of the St. George Field Office.

Proposals include managing recreational use through a no-fee permit system that limits group sizes and requires the use of appropriate cave safety equipment. Under this proposal, the public will receive information about cave safety, appropriate cave etiquette, and cave

resources and a new permanent kiosk at Bloomington Cave will be constructed. The St. George Field Office will be taking public comments regarding the Bloomington Cave Management Plan through Feb 25, 2009. “We’re planning to manage access with a user friendly process which also protects the resource,” said Tyree.



In 2005, an extensive graffiti cleanup project restored many of the cave walls to their near-natural state, but more work must be completed to further restore and protect Bloomington Cave. “There is a lot that needs to be done to turn back the clock, which includes removing trash and graffiti—repairing those things that have diminished the value of this otherwise pristine and unique resource,” said Jon Jasper, Outdoor Recreation Planner for the Arizona Strip Field Office, BLM. Jasper, an experienced caver, has worked extensively on improving Bloomington Cave by assisting with mapping the cave’s intricate and winding tunnels and cleaning up graffiti and trash.

“That’s why the St. George Field Office is moving to further protect this valuable

resource,” said Jimmy Tyree, manager of the St. George Field Office.

Cavers, like seventy-nine-year-old Dale Green, a member of the Salt Lake Grotto, along with numerous other caving enthusiasts from groups like the Color Country and Timpanogos Grottos, support appropriate management plans that are essential to preserving this unique natural resource. The “Grottos,” or caving groups, assist BLM in monitoring, restoration and management activities at Bloomington Cave.

With more than 13 years of caving experience and over 60 expeditions through



Bloomington Cave, Justin Epps strongly believes that appropriate management will help preserve the cave’s priceless resources. “There are formations in there that people aren’t aware of that are delicate and fragile like soda straws, flow stones and cave pearls. They are irreplaceable (formations) that take hundreds of thousands of years to make and if my great grandkids can see them, that would be great,” said Epps, author of Cave Safely, Cave Softly, a guide geared toward teaching safe caving practices to youth instructors.

“To make people responsible when they go in there is the best thing you can do,” Epps said.

The Bloomington Cave Management Plan can be reviewed in its entirety online at:

http://www.blm.gov/ut/st/en/fo/st_george/more/in_the_spotlight/bloomington_cave_management.html

Copies are also available at the BLM Utah, St. George Field Office: 345 East Riverside Dr., St. George, Utah.

All public comments must be received on or before the close of business, February 25, 2009, to be fully considered. Please clearly include the title “Bloomington Cave Management Plan” in your correspondence. Comments submitted after February 25, 2009,



will be considered to the extent feasible.

Written comments may be submitted by letter to: Bureau of Land Management, St. George Field Office Attention: Dawna Ferris-Rowley 345 East Riverside Dr., St. George, UT 84770

Electronic comments may be submitted by e-mail to: Dawna_Ferris@blm.gov.

Before including your address, phone number, email address, or other personal identifying information in your comment, you should be aware that your entire comment—including

your personal identifying information—may be made publicly available at any time. While you may ask us in your comment to have your personal identifying information withheld, we cannot guarantee that we will be able to do so.

For additional information regarding the public comment period, please contact Dawna Ferris-Rowley, Assistant Manager, BLM Utah St. George Field Office at (435) 688-3216 or via E-mail at Dawna.Ferris@blm.gov.



What's Brewing on Utah's Capitol Hill

There are 4 bills so far that have a direct impact on the public's ability to use vehicles on and access public land.

We will briefly list the bills and what they entail. You can follow the progress of these bills and our involvement via our blog page the link to which will be given at the end of this article.

The first bill is **House Bill (HB) 53- Driver License Amendments - Motor Driven Cycles -- Kiser, T.**

This bill will require those operating a street legal ATV on public streets to have a class D drivers license and a motorcycle endorsement.

USA-ALL has not weighed in on this bill, but as of now we are not opposed to it. It makes sense that those operating any motor vehicle on public streets should have a license to do so and an understanding of how to do so safely.

The second bill is **Senate Bill (SB) 22 Street Legal All-terrain Vehicle Amendments -- Jenkins, S.**

This bill caught us somewhat by surprise. Even more surprising is how fast it has cleared the senate. It now goes to the house floor for debate. We have been promised input on the bill but have not got any changes made to it yet. That should come sometime this week.

This bill makes some unwelcome changes to the street legal ATV bill we got passed last year. These changes include restricting larger full size vehicles from registering as a street legal ATV. There are many trail rigs that people own that are not used on regular roads. They would be used just as other street legal ATV's to access fragmented trails, drive into rural towns for supplies, etc. We feel that these full size vehicles are just as worthy of street legal ATV status as any other compliant vehicle would be.

USA-ALL is not opposed to the new class of vehicles called "Utility Vehicles" but we must find a way to include full size vehicles in this bill. As the bill now stands we are opposed to it. We have worked up some amendments that we will submit to the sponsor for consideration.

The third bill is **HB 278 B and C Roads Fund Amendments -- Noel, M.**

This bill would allow counties to use up to 30% of funds appropriated for the maintenance of class B and C for the adjudication of R.S. 2477 claims. It's pretty much that simple and we obviously support this bill. Any tool that we can give the counties to claiming and protecting our rights of way is a good thing.



The fourth and final bill is **HB 283 Illegal Use of Off-highway Vehicles -- Noel, M.**

This bill has been brewing for well over a year. USA-ALL has had some input on its drafting but left that process when it became clear that the direction of the bill was not one we could support.

Let us be very clear on one point. The stated intent of many who first drafted the bill was to curtail the illegal use of vehicles on public land and in so doing responsibly manage habitat and resources. And we agree with that intent 100%. But we do not agree with the proposed measures by which the bill and it's supporters hope will compel people to use their vehicles legally and responsibly.

This bill would give state and federal law enforcement new laws to prosecute offenders under. It has gone through various revisions the latest USA-ALL has had much input on. In simple terms the bill creates larger fines and heavier criminal charges for those caught operating or giving permission to operate a vehicle on closed roads or areas. This at face value may not sound that bad. But as always the devil is in the details.

Part of what determining is or is not a open road will fall back to federal travel plans and other government agency documents. If the federal government had clear concise plans and there were no disputes between various government entities over who owns and controls a road then this might be okay. But the fact is this is not the case. How this law would affect road ownership and the adjudication of rights of way is a huge concern to us.

We are further concerned that federal law enforcement officers will abuse the new laws. We wonder how this will affect the power of local law enforcement officers and how this new law may affect the state and county ability to assert disputed rights of way. We question, "Why do we as citizens of the state want to give more power to the same federal government that has ignored claims of road ownership by the state of Utah and her county's"?

We reject the philosophy that people can be beaten into submission by large fines and steep penalties. We believe good laws are largely supported and obeyed because they are

good and are a benefit to society. There will always be bad guys and those bad guys should be dealt with appropriately. But this bill as currently written will not really curtail illegal vehicle use. We believe that other measures should be attempted before using harsh penalties as a deterrent. We want a more proactive approach. We want clear, concise, and consistent travel planning and management from federal agencies, we want a public education campaign from the state and her agencies, we want existing laws enforced, even increased enforcement in areas of concern, and when those who violate them are found guilty then punishments that fit the crime. Punishments such as fines, probation, and certainly public land related community service.

This bill has undergone some crucial changes per our suggestions, if you don't like it now you should have seen it before our suggestions were taken by the bill sponsor. It was ugly. We have drafted some extensive amendments to the bill and will present them to the sponsor for consideration. USA-ALL feels strongly that we the OHV community needs to take ownership and responsibility of the problems regarding illegal vehicle use. We also are painfully aware of the fact that a few knuckleheads can jeopardize access for the rest of us. But we must ensure that our response to this issue does what we need it to do. This bill as worded won't do it. But we believe if the sponsor will implement our changes it will do a much better job. Stay tuned for those changes.

We acknowledge that there are those in our own community who feel this bill is needed and would like it to be even more punitive. We respect their right to differ with us. We know that in the end we all want to protect our access to public land.

Our position on this bill has been formed with the help of knowledgeable county commissioners, and others who have decades of experience in these issues. Our latest survey shows clearly that our membership supports this position. [For the results of that survey click here.](#)

For more on all of the bills we have discussed and other up to the minute legislative info visit our blog page at: <http://www.usaall.blogspot.com>



Factory Butte Service Project

On Saturday January 17, 2009 13 individuals, 3 BLM employees, and 2 Utah State Parks and Recreation Employees gathered near Factory Butte in Wayne County, Utah and put in yet another long day working on a fencing project. The weather was beautiful and the work went smoothly. The project is part of an ongoing effort by USA-ALL, the Southern Utah OHV club, concerned locals, and BLM to place infrastructure on the ground to help recreationists know what areas are open to their use and what areas are closed to help protect an endangered cactus.

Ironically yet predictably there wasn't a single so called environmentalist there to help with the effort. Further proving that off-road recreationists are true environmentalists and

are willing to invest themselves in the active management of public land unlike our radical counterparts who seem to do little more than complain and file abusive lawsuits. The plan to close much of the area is not ideal for recreationists or local folks. The reopening of thousands of acres is certainly a victory but it is not nearly what we had hoped and worked for.

Yet still our community has supported this imperfect plan with donated time and labor. We want to extend a big thank you to those who showed up this time and hope they found it worth while. The past few projects have been very successful. As of now they have constructed about 2 miles of pole fence. There is still about 1.5 mile of fence yet to be built and then the installation of kiosks and carsonite markers.

Radical environmentalists are posturing to stop BLM from allowing us to use the new open areas. It is imperative that we finish the project and then use the area in compliance with BLM rules. A particularly aggressive and radical organization the Southern Utah Wilderness Alliance (SUWA) has spent a few weekends near Factory Butte taking photos of people riding in closed areas and documenting what they can. They then use those photos to pressure BLM to close more areas. In the past we have encountered these types of stakeout photos from this same organization in court. They use them, often dishonestly, to compel judges to rule against us.

Please be aware of the rules and boundaries of the recreation area before you go and then comply. Also place peer pressure on others to do the same. USA-ALL has spent more money on protecting this area than most of us make in a year, not to mention the time and labor we have invested. We want to protect what we have worked for. Obeying the rules will help us do that. You can also help by donating some time and labor to finish installing the rest of the fence and signs. Once this is in it will clearly mark the area's boundaries which will greatly help direct people to the places they can recreate with their vehicles. If you are interested in helping out even for just a few hours please call Sue Fivecoats in the Hanksville Field Station at 435-542-3461. She needs a few small crews of 4 or 5 to finish up the work. Call her even if you only have one person who can help. She'll put you to work.

Thanks again to everyone who has worked on these projects and on making this recreation area a reality. We all would like to enjoy the area this spring so lets finish up the project and then all get together this spring for a fun day of riding and eating tasty meats cooked over hot coals! I'll see you all there.

Thanks again to all of our supporters especially to those who have actively donated to make our organization so effective. To those who haven't donated to us or haven't for a long time please donate. Without financial support from you we cannot increase our effectiveness. You can click the join \ donate link in the right hand column of this email. If you aren't sure whether to donate or not call us or come participate in our rally. You

will find we are the real deal and are worthy of your donation. We hope to see all of you out at the Capitol this week.

Wave Spin is the official Reel of Walt Disney Fishing

Port Richey, FL - (January 22, 2008) – In a bold move to make fishing more environmentally friendly while increasing the fun for anglers of all ages, Walt Disney World has chosen the new WaveSpin fishing reel above all other reels to be “THE OFFICIAL REEL OF THE WALT DISNEY FISHING EXCURSIONS®.”

Invented by legendary angler Doug “The Bass Professor” Hannon, the patented WaveSpin reel is the first and only zero-tangle reel in the world. It completely eliminates the age-old problems of fishing line tangles and knotted snarls that are sometimes cut off and discarded in our waterways by frustrated anglers, thereby preventing long term, harmful, even deadly hazards to our fish, birds and other wildlife. With the latest release



of the DHxL ultralight, there is a size for every fish worth fighting.

WaveSpin, recent winner of the fishing world’s most prestigious award, Field and Stream “BEST OF THE BEST” , is now available online or at most tackle stores. For more

information on how to have a positive and productive fishing experience while helping our environment, visit www.wavespinreel.com for a list of dealers near you.

Doug Hannon, widely known as “The Bass Professor”, holds 15 U.S. Patents for various fishing inventions, including the Weedless Trolling Motor and the new WaveSpin Reel. As a sportsman and active environmentalist, he has won numerous awards, and was named a “Legendary Angler” by the Fishing Hall of Fame in 2000. Doug has appeared on nationally televised fishing programs for many years, and is well known for his writing, photography, video, and public appearances to advance an enlightened public interest in conserving and enjoying our outdoor environment.

Recipe of the Month-- Stuffed Venison Steak

1 lb. round venison steak cut thin

1 tsp. sage

1/2 tsp. salt

1/2 tsp. garlic powder

1 egg

1 cup milk or broth

1/2 cup finely chopped celery

1 medium diced onion

1/4 tsp. black pepper

1 cup bread crumbs

1 tbsp. flour

1/2 cup sherry

2 tbsp. bacon fat

Mix bread crumbs, milk, egg, and seasonings to make stuffing. Salt the meat and cut into 2? x 4? pieces. Spread each piece of meat with dressing and roll, fastening the rolls with toothpicks. Roll in flour and brown in fat. Place in pan, add sherry and water, cover and cook for 2 hours at 375 degrees.

BLM-Utah Posts List of Proposed Parcels for Utah Competitive Quarterly Oil and Gas Lease Sale Scheduled for March

The Bureau of Land Management's Utah State Office today posted its proposed list of parcels for the quarterly competitive oil and gas lease sale scheduled for Tuesday, March 24, in Salt Lake City. The posted list, which identifies 109 proposed parcels totaling 159,861 acres, initiates a 30-day public protest period.

The 109 proposed parcels are located in areas under the management of six BLM-Utah Field Offices—Fillmore, Moab, Monticello, Richfield, Price, and Vernal.

100mpg Fisker Karma Makes its West Coast Premiere at the Desert Classic Concours d'Elegance in Palm Springs, California, March 1, 2009.

(January 6, 2009)—The world's first luxury plug-in hybrid car, the 2010 Fisker Karma, will make its West Coast debut at the Desert Classic Concours d'Elegance, in Palm Springs, California on March 1, 2009.

Recently unveiled at the January 2009 North American International Auto Show in Detroit, the four door premium electric drive sedan proves that driving style and performance need not be compromised for environmental friendliness.

According to Paul Merrigan, founder of the Desert Classic Concours d'Elegance, "In addition to the most significant classic cars, our event also features exciting new models demonstrating the best in design and technology."

Fisker Automotive, Inc., the new American manufacturer of premium "green" automobiles, will begin delivering the Karma in the fourth quarter of 2009. Starting price begins at \$87,900.

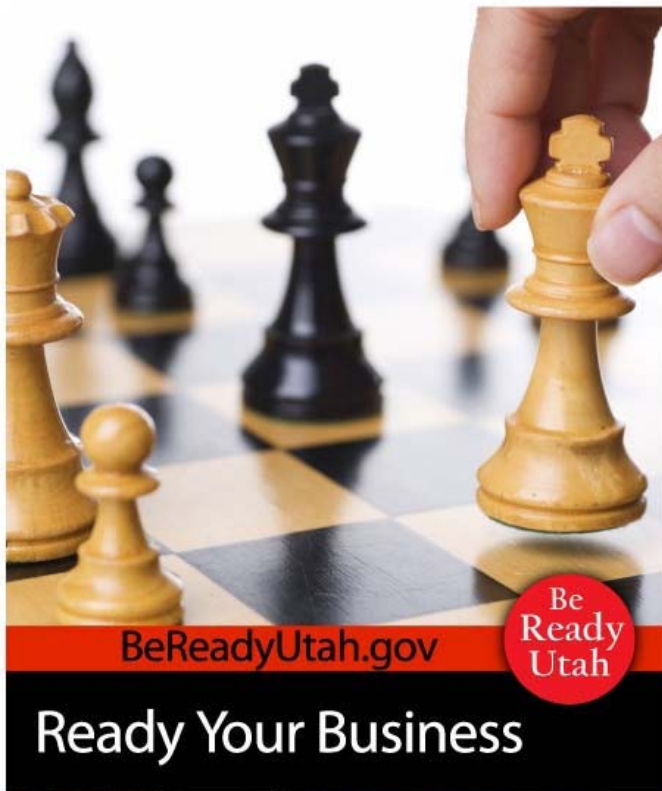


The Desert Classic Concours d'Elegance is a non-profit 501(c)(3) organization benefiting Palm Springs area charities. Held on the lush grounds and manicured fairways of the exclusive O'Donnell Golf Club in the heart of Palm Springs, the event continues the tradition that Palm Springs has long held with exotic automobiles, including the first road race in Southern California in 1950. Considered the Golden Era of road racing, these were unparalleled social events, with racers and spectators enjoying the nightlife offered by the legendary clubs and hotels of Palm Springs.

"Our event will focus attention on the unique history Palm Springs has in relation to these historically significant cars, as well as the celebrities and drivers that made them famous," says Merrigan.

This year's invited automobiles will be among the most significant expressions of innovative engineering, beautiful design, quality construction and finish, performance accomplishment and historical importance. The cars will be displayed so that spectators may learn about the history and significance of these wonderful vehicles.

For more details and ticket information: www.DesertConcours.com or (760)766-2824.



4th Annual Top of Utah Ready Your Business Workshop and Conference

Sponsored by Ogden Weber Chamber of Commerce and Division of Homeland Security

Thursday, April 30, 2009

Marriott • 247 24th Street • Ogden, Utah

Business Owners • Operations Managers

• Human Resource Managers • Risk

Managers

Continuity Planners • Information

Technology • Emergency Managers •

Retail • Manufacturing

Medical and Health Care • Facility

Managers • Security Professionals •

Accounting Managers

12 Points to Business Continuity Planning
Workshop 8:00 – 11:00 a.m.

Conference Plenary Sessions 11:30 – 4:30
p.m.

**Workshop including Conference \$40.00
per person**

**Conference Plenary Sessions only
\$35.00 per person**

Conference Includes: sponsor and
exhibitor displays, lunch and award
presentations

Ogden/Weber Chamber 801-621-8300

**Division of Homeland Security 801-
538-3400 or jessev@utah.gov**

Register on-line <http://www.echamber.cc/conferencereg.html>

Conference Sessions

Keeping Commerce Moving Daniel B Kuhn

Utah Dept of Transportation, Freight Planner *Critical Supplies and Resources may be detoured or unavailable following a major event. A look at Utah's transportation corridors and options will be discussed.*

Avoiding a Financial Crisis Brian Van Camp

KeyBank, Sr. Vice Pres. / Business Banking Manager *Knowing the risks of an economic downturn combined with a comprehensive continuity plan can provide your business with additional tools to avoid a possible closure.*

Washington County Communities Benefit from two Wildfire Protection Projects

St. George, Utah - Color Country interagency partners are working to reduce the risk of potentially catastrophic wildfire to the communities of Dammeron Valley, Diamond Valley, Central and Veyo located in central Washington County, Utah. In the summer of 2006, numerous wildfires posed a severe threat to the homes and residents of these communities, presenting the opportunity to pro-actively mitigate risks associated with wildland fire through hazardous fuels reduction and interagency partnerships. This action consists of two separate fuels reduction projects of 806 and 669 acres in size. Project locations are south of Dammeron Valley and south of the town of Central along Highway 18. Both protection measures are designed to provide rangeland health improvements by meeting natural resource management objectives in conjunction with community wildfire protection. This project will continue through April 2009.

This vegetation management project will reduce hazardous fuels within the wildland urban interface, improve watershed conditions and improve crucial mule deer winter range. Work efforts will be visible from Highway 18 and from all major roads systems within bordering communities. Vegetation in these areas will be removed in a mosaic pattern, leaving islands of treated and untreated vegetation, primarily in the flat terrain east and west of Highway 18. This project will resemble fuels reduction work previously completed near Brookside, Utah. The mechanical thinning of pinyon and juniper trees is one of many treatment options used by land management agencies.

Vegetation will be reduced by a mechanical chipper/shredder, often referred to as a "Bullhog." Removal of encroaching pinyon and juniper will benefit the environment by enabling more productive, desirable grasses, forbs and shrubs to return to the site. To facilitate this, a mix of fire-resistant grasses and forbs suitable to the site will be seeded. Seeding will also reduce soil erosion, improve wildlife habitat, improve water quality and quantity, reduce the risk of invading cheatgrass, and lower the risk of wildland fire negatively impacting these communities.

This is a cooperative project between Bureau of Land Management, Utah Division of Wildlife Resources, Utah Division of Forestry, Fire and State Lands and Utah Department of Agriculture. For additional information, please contact Paul Briggs at (435) 865-3002.

FOCUS ON FUNCTION AND LIFESTYLE CREATES NEW BRAND FOR DOGS

Meticulous designs create new and innovative dog products

Fayetteville, Ark. – For humans, proper equipment for any outdoor activity means the latest technology and sleek look. What’s lacking is the same functional and good looking gear for their beloved dogs.



Too often humans pack meticulously for themselves, but are not given the chance to do the same for their dogs. Six Bones dog gear introduces a line specifically for the outdoor enthusiasts, looking for gear that reflects their lifestyle, and makes it easier to spend time outdoors with their dog.

Six Bones, based in Fayetteville, Ark., created innovative products that draws influence from the technology available in human sports.

“There are so many cool features in apparel and outdoor gear for me, but the gear on the market for my dog was dull and underperforming,” said Bryan Griggs, VP of Six Bones.

Three of Six Bones new products include:

Hook-Up dog leash- This dog leash looks more like it was meant for surfing. With dual-swivel joints and soft handle, this dog leash not only looks cool, but also avoids the twisting in most dog leashes available today.

Crash Dog Bed- Inspired by climbers, this dog bed acts similar to a climber’s crash pad. Firm, long-lasting foam supports hip and back alignment. The taco folding design keeps dog hair in when moving bed from place to place.

Shake Down Utility Mat - The Shake Down Utility Mat is a multipurpose cover built to keep dog hair off of your car or any place you may travel with your dog.

About Six Bones

From winters in the mountains, to chasing surf in the summer, at Six Bones, we have and do live our passion, often with our dogs at our side. Add four legs and two legs and you get Six. Every day pets and humans bond with each other in their daily life. For more information, call 479-927-2447, or visit www.mysixbones.com.

National Wild Horse and Burro Advisory Board to Meet in Reno in March; *BLM Announces Three Appointments to Board*

The Bureau of Land Management's National Wild Horse and Burro Advisory Board will meet in Reno on Monday, March 2, 2009, to discuss issues relating to the management, protection, and control of wild horses and burros on Western public rangelands. The one-day meeting will take place from 8 a.m. to 5 p.m., local time, at the Silver Legacy Resort Casino's Reno Ballroom, 50 East Fourth Street, Reno, Nevada 89501. (The hotel phone number is 1-775-329-4777.) The agenda of the meeting can be found in the February 3, 2009, Federal Register on page 5941.

The Advisory Board provides input and advice to the BLM as it carries out its responsibilities under the 1971 Wild Free-Roaming Horses and Burros Act.



The law mandates the protection, management, and control of these free-roaming animals in a manner that ensures healthy herds at levels consistent with the land's capacity to support them. The BLM manages about 33,000 wild horses and burros that roam BLM-managed rangelands in 10 Western states.

The public may address the Advisory Board at the March 2 meeting at an appropriate point in the agenda, which is expected to be about 3 p.m., local time. Individuals who want to make a statement should register with the BLM by noon on the day of the meeting at the meeting site. Depending on the number of speakers, the Board may limit the length of presentations, set at three minutes for previous meetings.

Speakers must submit a written copy of their statement to the BLM at the meeting; those who would like to comment but are unable to attend may submit a written statement no later than February 25, 2009, to: Bureau of Land Management, National Wild Horse and

Burro Program, WO-260, Attention: Ramona DeLorme, 1340 Financial Boulevard, Reno, Nevada, 89502-7147.

Comments may also be e-mailed to: Ramona_DeLorme@blm.gov. Those submitting comments electronically should include the identifier "WH&B" in the subject of their message and their name and address in the body of the message. For additional information regarding the meeting, please contact Ramona DeLorme, Wild Horse and Burro Administrative Assistant, at 775-861-6583.

Individuals who use a telecommunications device for the deaf (TDD) may reach Ms. DeLorme at any time by calling the Federal Information Relay Service at 1-800-877-8339.



The BLM also announced that Robin Lohnes, Executive Director of the Washington, D.C.-based American Horse Protection Association, has been re-appointed to the nine-member Advisory Board in the category of wild horse and burro advocacy. Dr. Boyd M. Spratling, a veterinarian from Deeth, Nevada, has been reappointed to the Board in the category of veterinary medicine. New to the Board is Janet M. Jankura of Richfield, Ohio, who will represent the category of public interest.

Advisory Board members serve three-year terms, on a staggered-term basis, with one-third of the Board subject to appointment each year. The Board meets at least two times a year and the BLM Director may call additional meetings when necessary. Members serve without salary, but are reimbursed for travel and per diem expenses according to government travel regulations. In accordance with Section 7 of the Wild Free-Roaming Horses and Burros Act of 1971, Federal and state government employees are not eligible to serve on the board.

TREAD LIGHTLY! INCREASING OUTREACH TO HUNTING, FISHING, AND SHOOTING SPORTS

OGDEN, UTAH (February 2, 2009)—Tread Lightly! will be working in 2009 to increase its outreach to the hunting, fishing and shooting sports communities.

"These recreationists have played a huge role in conservation efforts throughout history," said Tread Lightly!'s executive director Lori McCullough.

"We think hunters and anglers will embrace Tread Lightly!'s message and principles, further reducing impacts on public land and waterways. This will in turn, help keep hunting, shooting and fishing areas open to the public."

Tread Lightly!'s connection with these enthusiast communities was jump started when 40 organizations signed on to the Federal Lands Hunting, Fishing, and Shooting Sports Roundtable Memorandum of Understanding (MOU) with the U.S. Forest Service and Bureau of Land Management. A clause in the MOU encourages these organizations to



promote outdoor ethics, like those developed by Tread Lightly! to their constituents. Some of the organizations signed on the MOU Roundtable include Safari Club International, National Shooting Sports Foundation, Izaak Walton League of America, National Rifle Association, Delta Waterfowl Foundation and The National Wild

Turkey Federation.

The Roundtable recently commissioned Tread Lightly! to develop a national shooting sports education and outreach campaign. The campaign will focus on reducing litter, property damage and environmental impacts from irresponsible shooting on public land.

A partnership between The U.S. Forest Service and Tread Lightly! provided \$10,000 for the campaign development and implementation. Yamaha Motor Corporation also donated an additional \$10,000 towards the project.

In developing the campaign, Tread Lightly! will draw from extensive shooting sports research conducted by a public opinion research firm called Responsive Management.

Tread Lightly! plans to unveil the campaign this spring or early summer.

Additionally, Tread Lightly! is forming strategic alliances with several of these hunting, shooting, and fishing organizations. Partnerships have already been established with The National Wild Turkey Federation and The Delta Waterfowl Foundation. These two conservation groups play key roles in preserving wildlife, habitat and hunting opportunities.

Association of Contingency Planners Utah Chapter

From the Board of the Association of Contingency Planners Utah Chapter, we would like to personally invite you to our association and our monthly meetings. Our members consist of Government and Local Businesses.

We have some great things planned for this year! Our focus is to have exciting meetings with excellent speakers. We want the time you spend with us to be very rewarding and informational. Our most valuable offering is the ability to benchmark with professionals from your own business sectors. This is where you will find out what is working or not for other businesses and take their best practices to help you as you develop your plans and rehearsals.

This year we are also planning a symposium to be held May 14th and are planning to have some great speakers and many of our local vendors in the field of Disaster Preparedness Planning and Recovery. This has been a premier event in the past years and we expect to have a great symposium again this year.

Our fees can't be beat for membership! At only \$90.00 per year for membership, it is a great deal. Other organizations charge much higher than we do, and we feel that you will get more opportunities to benchmark and share experiences with those that actually work in your business arena. As a member you can serve on the board where you can develop your skills and assist with the future of the Association. Every opportunity will help you to further your career in the field of Emergency Preparedness and Disaster Recovery.

All of our meetings and Symposium offer Continuing Education credits for those that are certified in the Disaster Recovery Institutes. This is just another benefit of being a member of the Association of Contingency Planners. The relationships that you gain in an association will last with you throughout your life.

If you want to just come and check us out, please feel free to do so. You can be our guest to the first meeting you attend, and when you see the value, we would invite you to become a full member enjoying all the benefits of this National Organization.

The opportunities of membership are too great! Don't let this one pass you by. We look forward to seeing you at our next meeting Meeting Dates: Second Thursday of every month. Meeting Location: 1625 South 900 West, Salt Lake City, Ut (Alcohol Beverage Control)

Meeting Time: 9:30 am to 11:30 am

So Cold It's Hot!

February 2009, Lynnwood, Wa.-SOG Knives. Twitch XL an understated professional's knife.

"This fast operating locking folder features a unique steel treatment for the blade and mated to the heavy service handle the Twitch XL is tougher than nails." --Spencer Frazer, SOG President

The cool thing (pun intended) about this knife is the blade treatment. Actually it's not cool but flat out cold. The Twitch XL blade is made from tough AUS-8 Stainless steel heat treated to a final Rockwell hardness of 57-58.

After the Twitch XL is fully heat treated it is then given a bath in liquid nitrogen at minus 300 degrees.

Cryogenic treating of metals from race car crank shafts to high-dollar musical instruments

is a fairly recently developed metal finishing technique. Basically the metal is taken down to a level of cold where the metal molecules are shrunk closer together. When returned to normal temperature the metal molecules do NOT fully expand back to normal resulting in a denser metal. Additionally, this treatment has the advantage of retaining the AUS-8 metallurgical chemistry (high-carbon and molybdenum) for toughness and edge retention.

This form of heat treating is costly, technical and tricky and is performed to exacting SOG standards. The result is a blade that will cut like a laser for much longer-and you can dip the tip in a martini and it will make the drink colder. Okay, maybe that's a bit far fetched, but makes a great bar story.

SOG Speed: One hand operation is easy, just move the blade open about 10-15 degrees and SOG's Assisted Technologies (S.A.T.) takes over and fully opens the blade in the blink of the eye.



Pocket packing is easy because its pocket clip is easily reversible for either right or left hand carry and the position of the clip places the

knife deeply into the pocket for a reduced public profile.

Grabbing it: Grip matters, and the Twitch XL has plenty with a 4 1/4 inch long handle featuring a wide profile (top to bottom) that provides the user with a handful of serious griping surface for plenty of cutting leverage.

Twitch XL Specifications:

Overall open length: 7.5"

Blade specifications: 0.125" thick by 3.25" in length (drop tip or tanto blade)

Blade material: Cryogenic heat treated AUS-8 Stainless steel; 57-58 C Rockwell scale.

Handle material :Incredibly tough black hard-anodized 6061-T6 machined aluminum or an optional graphite handle.

Weight: 4.2 oz.

MSRP Dependant on type of blade and handle materials and finish:

- Black handle with drop tip blade.....\$ 100.00
- Graphite handle with drop tip\$ 100.00
- Black handle with black TiNi blade (Titanium Nitride surface finish).....\$ 140.00
- Tanto blade with graphite handle\$ 100.00
- Tanto with black handle and black TiNi blade\$ 140.00
- Tanto with black handle\$ 100.00

Image is Tanto/black handle \$ 100.00

Consumers may visit SOG's extensive product website at www.sogknives.com SOG knives are sold through sports retailers throughout North America.

Angling Community Advocates Change in Federal Energy Protocol

TRCP leads consortium of angling businesses, groups in objecting to minerals-leasing approach, says proposed Colorado energy leases could harm native trout habitat

WASHINGTON – A consortium of America’s most prominent angling businesses and groups spoke as one voice today in a letter to Interior Secretary Ken Salazar, urging prompt review and revision of the federal approach to public-lands minerals leasing and criticizing the inclusion of areas of native trout habitat in an upcoming Colorado energy lease sale. The Theodore Roosevelt Conservation Partnership, a national conservation coalition, led the effort by the companies and organizations, which represent the interests of millions of anglers and the angling industry.

“The federal government’s approach to oil and gas leasing on public lands poses a threat to our game species and our sporting traditions,” said Jim Bartschi, president of Scott Fly Rod Company and one of the letter’s signatories. “Our consortium has a vested interest in resolving this threat. The waterways that flow across public lands shelter populations of trout, salmon and steelhead that attract anglers from all parts of the globe. They also support tens of thousands of sustainable American jobs in the manufacturing, retail and service sectors. We commend Sec. Salazar’s interest in balancing public-lands energy development with the habitat needs of fish and wildlife.”

On Feb. 12, 2009, the Colorado Bureau of Land Management intends to open approximately 80,000 acres of federal public lands to oil and gas drilling, of which more than 57,000 acres are located within designated Colorado River cutthroat trout habitat. Prized by anglers across the country, the native trout species could be jeopardized by energy development in these areas as currently proposed. The sportsmen are concerned that irresponsible resource development could result in the loss of values associated with public lands and fisheries that depend on these lands.



“In the past three to five years, our organization and others have expended considerable time and money to conserve and protect native cutthroat trout and their habitats in Colorado,” said Robin Knox, coordinator of the

Western Native Trout Initiative and a signatory of the sportsmen’s letter. “We believe that

energy development within the intact, high-quality watersheds that support Colorado River cutthroat trout populations could reverse these efforts and result in this important species' further decline.

“While the Initiative supports development that is consistent with the multiple-use mandate for public lands outlined in the Federal Land Policy and Management Act,” Knox continued, “we maintain that certain habitats and species should be afforded greater protections to avoid unnecessary degradation and potential future listings under the Endangered Species Act. The Colorado River cutthroat trout is one of these keystone species.” The WNTI is a recognized National Fish Habitat Partnership.

Initially petitioned for listing under the Endangered Species Act in 1999, the Colorado River cutthroat twice received a “not warranted” decision regarding its threatened or endangered status, yet it was designated a “sensitive species” by the U.S. Forest Service and is subject to special state-level management guidelines in Colorado, Utah and Wyoming. By leasing areas of designated habitat for the species, the BLM would violate a multi-agency agreement pledging to “expedite implementation of conservation measures for Colorado River cutthroat trout.”

The Colorado lease sale has drawn fire from a range of diverse interests, including citizens groups and local government, due to concerns about specific leases and the timetable for their sale to industry. The TRCP filed an official protest of the sale on Jan. 28. Protests like these are the only means for the public to participate in the leasing process.

“The February BLM lease sale in Colorado presents a prime opportunity for Sec. Salazar to undertake review of the current mineral leasing paradigm and implement long-overdue changes in policy, protocol and management,” said TRCP Field Representative Ross Tuckwiller, a resident of Durango. “Sportsmen welcome the opportunity to work alongside the secretary in accomplishing this worthwhile objective.”

[Read the sportsmen's letter.](http://trcp.org/documents/salazarcrtletter.pdf) <http://trcp.org/documents/salazarcrtletter.pdf>

The TRCP believes that to better balance the concerns of fish and wildlife in the face of accelerating energy development, federal land management agencies must follow the conservation tenets outlined in the [FACTS for Fish and Wildlife](#).

Inspired by the legacy of Theodore Roosevelt, the TRCP is a coalition of organizations and grassroots partners working together to preserve the traditions of hunting and fishing.

Shriekers Welcome at World Elk Calling Championships

MISSOULA, Mont.—Attention all squealers, grunters and shriekers: OK, so you're a loudmouth, but do you have what it takes to win the Super Bowl of elk calling?

If so, bring your A-game to the Fort Worth (Texas) Convention Center, March 6-7, for the Rocky Mountain Elk Foundation/Leupold 2009 World Elk Calling Championships. Registration is open to the public.

The raucous competition will be held as part of the Elk Foundation's 25th Annual Elk Camp & Hunting, Fishing and Outdoor Expo, March 5-8. Spectator seating for the elk calling championships is included with daily admission to the expo: \$12 per person or \$25 per family, and free for kids 5 and under.



Preliminary rounds of competition begin Fri., March 6, at 9:00 a.m. Finals begin Sat., March 7, at 9:00 a.m., followed by awards and crowning of 2009 world champions.

“We’re searching for the world’s best elk callers. No experience is necessary to enter and compete in the prelims, although many serious callers have already qualified for the finals by competing in regional competitions held around the country over the past several months,” said Beth Shipley, longtime director of the RMEF/Leupold World Elk Calling Championships.

Cash and prizes will be awarded for first- through third-place in six divisions—Pee Wee (age 10 and under), Youth (age 11-17), Natural Voice (no calling devices allowed), Women’s, Men’s and Professional (sponsored competitors). Judges include former champs, naturalists and hunters.

Competitors must be registered by 5:00 p.m. on Thurs., March 5.

Entry fees are \$10 for Pee Wee and Youth, \$35 for Natural Voice, Women’s and Men’s, and \$100 for Professional. Entry fees also provide contest participants with admission to the expo. Registration forms and rules are available at www.rmef.org.

A just-for-fun team competition also will be held. Up to three callers can work together in a comedy skit simulating interactions between bulls, cows and calves. Always hilarious, winners are chosen by the audience. There is no registration fee for the team event.

The 2008 World Elk Calling Championships were featured in the New York Times, bringing international exposure to the event.

Along with the RMEF/Leupold 2009 World Elk Calling Championships, the expo will fill the Fort Worth Convention Center with elk hunting seminars, displays of record elk, kids' activities, auctions and an exhibit hall filled with art, gear, firearms and outfitted hunting and fishing opportunities. It's all a showcase and fundraiser for one of the nation's premier conservation organizations. The Elk Foundation recently topped 5.5 million acres of elk habitat conserved or enhanced.

Show hours: Thurs., March 5, 10:00 a.m. to 5:00 p.m.; Fri., March 6, 9:00 a.m. to 6:00 p.m.; Sat., March 7, 9:00 a.m. to 6:00 p.m.; and Sun., March 8, 9:00 a.m. to 4:00 p.m.

For more details, visit www.rmef.org.

Step Over To The Wild Side With WildSide Exterior Cladding

Style Crest's Innovative New Way to Display a Passion for the Outdoors

ORLANDO, FL- What happens when you combine building products innovator Style Crest® with Mossy Oak®, the leader in camouflage designs? You end your hunt for realistic camouflage vinyl siding - WildSide™ exterior cladding from Style Crest with Mossy Oak Obsession®.



Style Crest has licensed the Mossy Oak Obsession pattern and developed WildSide exterior cladding - the only vinyl siding product on the market that is focused on the more than 17 million outdoor enthusiasts.

Now avid outdoor enthusiasts can display their passion for nature on their sheds, hunting cabins, shooting houses, blinds, and barns, and they can even bring their passion for hunting home with residential accents.

"We decided that it was time to get a little wild, show our innovative side and shake things up a little bit, to let loose of the traditional and the mundane and step over to the wild side," said Brad Johnson, vice president of marketing for Style Crest Building Products.

"WildSide exterior cladding from Style Crest, featuring Mossy Oak Obsession, is a unique and exciting way to create the lifestyle people want and help them express their passion for the outdoors. While we would be thrilled to see a whole sub-division of homes in WildSide siding, we are focused on the outdoor enthusiast who has been hunting for a way to showcase their love of the outdoors on a grander scale."

Innovative WildSide exterior cladding is the only large-scale camouflage solution that combines ease of installation with durability and low maintenance. WildSide is available in a double 4-inch horizontal reveal and a double 5-inch vertical reveal (also used as a soffit) along with accessories, including a window lineal that can be used as a residential accent. It is available through building materials dealers and distributors who carry siding from Style

Crest.

WildSide exterior cladding from Style Crest with Mossy Oak Obsession is the durable, low-maintenance camouflage solution for the outdoor enthusiast. Mossy Oak Obsession builds on Mossy Oak's expertise in using ghost shadows and realistic limbs, leaves and digitally enhanced backgrounds to offer true versatility, both geographically and season to season.



Style Crest, Inc. is a vertically integrated manufacturer and distributor of innovative building products. With 35 years of experience serving the building industry, Style Crest has a profound understanding of the needs of its customers. Our approach is based on quality products, deep relationships and a different attitude. To learn more about WildSide camouflage siding, visit www.wildsidecamo.com. To learn more about Style Crest, visit our web site at www.stylecrest.net or give us a call at 800.925.4440.

Cajun Line cinches knot with Wurm and Hackney

TULSA, Okla. (Feb. 2, 2009) - Zebco Brands announces that veteran bass anglers Greg Hackney and Mike Wurm have been signed as new pro staff members for the company's Cajun Line brand. The two tournament pros will be fishing Cajun's red monofilament lines and braid, and the recently introduced clear fluorocarbon.

"Getting Greg and Mike onboard to promote Cajun Line is big news and symbolizes the emphasis we're putting behind this brand and the fishing line category," said James Therrell, Cajun Line product manager. "These anglers represent the same kind of integrity and get-it-done fortitude by which the Cajun brand was originally founded, and most importantly, they believe in the quality of these products as strongly as we do."

"I actually tested the fluorocarbon line on redfish because they're stronger and harder on line than bass," Hackney said. "I fished all day, caught 12 redfish ranging from 5-20 pounds and never had to re-tie and never broke the line. I have a lot of confidence knowing that my Quantum reels will be spooled with Cajun for the Bassmaster Classic."

Hackney hails from Gonzales, La., and has surpassed the million-dollar mark in bass tournament earnings. Wurm is from Hot Springs, Ark., and, like Hackney, fishes the BASS Elite Series. He has nearly three-quarter million dollars in career earnings to date.

Thousands of anglers are loyal to Cajun's red fishing lines, a color chosen as a result of testing under actual fishing conditions and supported by science. Red is the first color in the color spectrum to be absorbed as it penetrates into water's depths, making it the least visible

of all.

Cajun Fluorocarbon is clear because fluorocarbon, by its own properties, is already practically "invisible" in water. A 100-percent fluorocarbon, Cajun's new line incorporates the latest in technology to make it the first in which small diameters, flexibility and low stretch have come together in perfect harmony.

"I did some thorough testing of the new fluorocarbon line at the recent PAA tournament on Lake Toho, and I was very impressed," said Wurm. "It casts extremely well, and after three days of testing, I saw no evidence of wear and never had to re-spool. I'm confident Cajun will make many bass anglers better fishermen."

For more information about all Cajun fishing line products, visit www.cajunline.com

