

SEE HUNDREDS OF TUNDRA SWANS

OGDEN — Seeing and hearing just one tundra swan is enough to make your heart jump.

Imagine seeing and hearing hundreds of them.
You can at Tundra Swan Day.

Tundra Swan Day—March 8

The Division of Wildlife Resources will host its annual Tundra Swan Day on March 8. Admission is free.

Viewing will take place at three sites—the Farmington Bay Waterfowl Management Area west of Farmington, the Salt Creek WMA west of Corinne and the Bear River Migratory Bird Refuge west of Brigham City.

Farmington Bay and Salt Creek

Viewing at the Farmington Bay and Salt Creek WMAs runs from 9 a.m. to 3 p.m.

DWR biologists and volunteer naturalists will have spotting scopes set up so you can get a close look at the swans. They'll also provide parabolic dishes you can use to get a crystal-clear listen to the unique sounds the swans make.

At the Farmington Bay WMA, you can also hop into a van for a "behind the gates" tour. These free tours will take you to parts of the WMA that are normally closed this time of the year.



Bear River

Viewing at the Bear River Migratory Bird Refuge runs from sunrise to sunset. You can see swans from your vehicle as you drive along the refuge's auto-tour route.

Before heading to the refuge, stop by its Wildlife Education Center at 2155 W. Forest St. in Brigham City for maps and information. The center is open from 10 a.m. to 4 p.m.

To reach the center, exit I-15 at Exit 363. After you've exited the freeway, turn west. The center is about one block west of the freeway.

For more information about Tundra Swan Day, call the DWR's Northern Region office at (801) 476-2740 or the Bear River Migratory Bird Refuge at (435)

723-5887.

Watching and listening on your own

If you can't attend the March 8 event, some great opportunities are available to watch and listen to swans on your own.

The Bear River Migratory Bird Refuge is one of the best. You can see hundreds of swans along the refuge's auto tour loop. The 12-mile loop will take you across most of the refuge that's open to the public.

The Ogden Bay WMA also provides two good spots to see and listen to swans.

One of those spots is the parking area at 5500 W. in Hooper. The parking area is at the end of 5500 W., about one mile north of 4000 S.

The other spot is the parking area at 7500 W. in West Warren. The parking area is at the end of 7500 W., about one mile south of 12th Street (SR-39).

The migration of swans through Utah should peak within the next three weeks. Thousands of swans will be in Utah then.

Updated Fishing Report offered

WARNING: Whirling disease was found in the Northeastern Regional area. Please make sure to clean, dry and sterilize waders, live wells and other fishing gear before venturing to another water. Also do not clean fish or dump fish parts taken from one water into another lake or stream as this could also move whirling disease organisms.

BIG SAND WASH RESERVOIR: Anglers report fair ice fishing for rainbows near the dam/boat ramp. Check ice condition carefully before venturing out, especially the edges as it may be filling.

BROUGH RESERVOIR: No new reports. Reservoir has ice. Check ice condition carefully before venturing out, especially the edges as it may be filling. To get to Brough, take State Route 88 south from US Route 40 (Ouray Road). Turn west at the second dirt road past the high power lines—it should be signed. Follow this road approximately two miles following the signs. Road can be quite rutted.

BROWNIE / SPIRIT LAKE: No new reports. The area has received several snowstorms and lakes have ice. Check ice condition carefully before venturing out. Roads closed, accessible by skis or snowmobile. Warning: whirling disease was found in this area. Please make sure to clean, dry and sterilize waders, live wells and other fishing gear before venturing to another water. Also do not clean fish or

dump fish parts taken from one water into another lake or stream, as this will also move whirling disease.

BULLOCK / COTTONWOOD RESERVOIRS: No new reports. Both reservoirs have ice, but check conditions carefully before venturing out. Reservoirs



are located approximately five miles north of the town of Gusher.

CALDER / CROUSE RESERVOIRS: Anglers have reported fair to good ice fishing. No road access, anglers are using snowmobiles from the Jones Hole Road. Calder regulations include: flies and lures only, no baits; all fish under 22 inches must be released immediately; bag limit is one fish over 22 inches.

CURRENT CREEK RESERVOIR: Lake has ice, several reports of good fishing. Anglers are going in from the dam and have fished in several different depths with good success for trout. Check ice edge thickness carefully before venturing out. Area received more snow last week. The road was kept open to the dam.

EAST PARK / OAKS PARK: No new reports, access by skis or snowmobile. Reservoirs have ice. Check ice edge condition carefully before venturing out as reservoirs are likely being filled.

FLAMING GORGE: As of Feb. 19, launching boats is not possible at Mustang and Cedar Springs ramps but they should reopen soon as they are only frozen with a thin sheet of ice. The canyon up reservoir is frozen just past Cedar Springs. All other boat ramps are frozen. Ice is mostly fishable from Sheep Creek north. Ice has formed in Linwood, Antelope and Sheep Creek areas but check conditions carefully since pressure ridges have also formed on many areas of the reservoir. Ice is 16+ inches thick approximately 400 yards off of the Antelope ramp. Most of the snow has melted off of the ice so snow/ice cleats for your boots are recommended.



Lake Trout Fishing: Good fishing for 16- to 24-inch lake trout on most areas of the reservoir north of the pipeline. Smaller lake trout will be concentrated in the northern end of the reservoir. Try areas like confluence, Buckboard, Marsh Creek, Current Creek, Anvil Draw, Skunk Cliffs and other locations in 30 to 70 feet of water near the old river channel. Use tube jigs in white, chartreuse, glow or brown tipped with a small chunk of sucker or chub meat. Airplane jigs and jigging spoons also work. Fishing is usually best early in the morning or later in the afternoon.

Use no stretch line to feel strikes and set the hook better. A graph to see suspended fish also helps. Unlike their larger relatives, the smaller lake trout are excellent table fair with orange flesh and taste as good or better than a rainbow when cooked up on the grill. There's an overabundance of lake trout under 28 inches in the Gorge so do your part to help the fishery and keep a limit of eight fish.

Larger lake trout ice fishing should be good from Big Bend south to Anvil Swim Beach. Use larger tube jigs and jigging spoons to target only the bigger fish (smaller jigs will catch both large and small fish). Remember, only one fish over 28 inches may be kept.

Kokanee Fishing: Fishing is slow through the ice. If you can find schools of fish, try vertical jigging with buzzbombs or jigging spoons. Tipping it with a mealworm or fish egg may help.

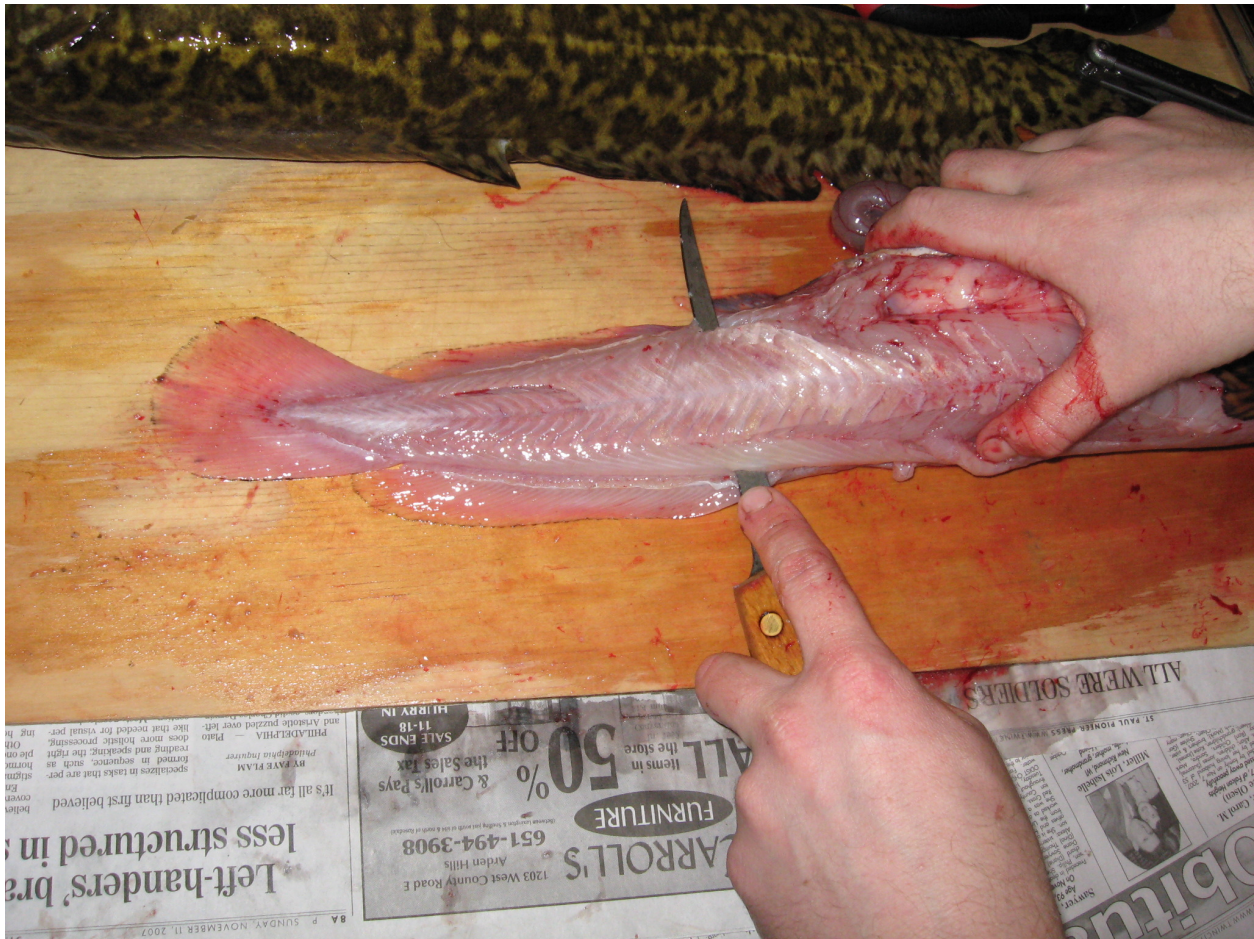


Rainbow Fishing: Anglers are reporting good fishing for rainbows on most of the reservoir. Ice fishing for rainbows in Wyoming was good if you can find fish. Jigs,

spoons and other typical rainbow gear work well. Look for suspended fish on your graph at 10 to 30 feet. Drop your lure in front of them to entice a strike. Most colors of spoons and minnow lures will work but go with lures in the one- to two-inch size.

Burbot (Ling) Fishing: Getting reports of burbot being caught in Firehole, Lost Dog, Sage Creek, Confluence, Buckboard, Holmes Crossing, Anvil Draw, Skunk Cliffs and Marsh Creek areas. Still good catch rates for burbot from 5 p.m. to 9 p.m.. Locate flats and points near the old river channel. Try fishing with jigs late in the afternoon, early morning or at night on points coming into reservoir. Use glow tube or curly tail jigs two to three inches in size about 1/8 to 1/4 ounce in weight. Tipping with sucker or crayfish meat will help catch fish. Use of smelly jelly or similar scents in crayfish also seems to help. These fish are fairly shallow (20 to 40 feet) mostly in the Wyoming end of the reservoir. Some recent reports indicate fast catch rates.

If fishing in Utah, try rocky points on Antelope Flat or in Linwood Bay. November netting in the area north of Buckboard has shown a large increase in the number of burbot present. Larger fish are 30 inches and up to four or five pounds. Burbot activity increases under the ice as these fish spawn in winter. These fish must be harvested if caught in Utah to help control their population as they were illegally introduced to the upper Green River drainage and could have a major impact on other fish species.



There is no limit on burbot but you cannot waste the burbot in the Wyoming end of the reservoir and they can be released there. However, please don't release any of these fish as they have been eating large amounts of crayfish and are also consuming kokanee salmon, smallmouth bass and other critical food sources for other fish species. They could have an extreme impact on the reservoir fishery and should be removed by fishermen. Burbot are an excellent eating fish with white, flaky flesh that is similar to a perch. They can be breaded and fried or boiled and dipped in melted butter. You can use six lines on the ice in Wyoming so take advantage of tip-ups and harvest some burbot. By law, be sure you have your name on your tip-ups and tend only your lines if you are fishing in a group.

Smallmouth Bass Fishing: Smallmouth fishing is slow, as smallmouth tend not to bite well at temps near or below 50 degrees. Use twist tail grubs on lead head jigs or small plastic worms, sinkos, twitch and crankbaits in about five to 30 feet of water off rocky shorelines and points. Crayfish imitation colors will work the best. Drop shot techniques will also work.

GREEN RIVER: (upper) The flows on the river are currently 800 cfs. Due to low inflows into the reservoir in 2007, flows should remain steady at 800 cfs throughout the winter to conserve water. Visit the [Bureau of Reclamation Web site](#) for the latest information on flows. Fishing on the river slows a bit during the winter, as water temps are low. Dry fly fishing is typically slow during the winter. Nymphing action was good. Watch for hatches to occur starting in April. Please remember the slot limit size range has changed from 13 to 20 inches to 15 to 22 inches to make regulations more consistent statewide. Nymphing with glo-bugs and San Juan worms with smaller nymphs trailering was the workhorse. Also try small midge patterns. Streamers are working well and have been extremely good on some days, try size 2-4 buggers such as Goldilox and patterns in olive, pink and white. Spin fishermen should try small rapalas (floating, countdown and husky jerk); small spinners; black, brown or olive marabou jigs; and other small jigs. Please check to see that your tube jigs contain no fish attracting scents, as they are illegal to use in the river. New Zealand Mudsnaill densities have dramatically increased in several localized areas near Little Hole, and have been documented in most areas of the river. Please thoroughly clean mud and vegetation from waders, boats and fishing gear; and if possible, completely dry equipment before leaving the area. A hot water bath (120° F) will kill mudsnails, and spraying equipment with 409 or a similar soap solution before drying will increase effectiveness.

GREEN RIVER: (lower) Water level is low and the river is frozen, much more so than normal but as the currents move and undercut the ice—it is unsafe.

MATT WARNER RESERVOIR: A few anglers have reported good to excellent trout fishing. They have been accessing the reservoir using snowmobiles as the roads are impassible due to deep snow and large drifts.

MOON LAKE: No new reports. Should good fishing as observed at lakes at similar elevations. Check the edges carefully as the water level should be rising.

PELICAN LAKE: Ice over a foot thick with the possible exception of those areas close to shore, which get exposed as reservoir fills. Anglers report good but spotty fishing for bluegill and bass in shallow waters. One group reported watching blue gill under the ice for several hours before they finally started hitting. Then it was excellent fishing for an hour before the feeding frenzy turned off. Try small brightly colored jigs tipped with bait such as a mealworm or piece of a night crawler. Anglers recommend trying several areas, including those in or near the reeds in three to seven feet of water, to locate the schools.

RED FLEET RESERVOIR: Reservoir has ice and we've gotten several reports of good fishing for rainbows with a few browns being taken. Watch the edges as the reservoir is filling.

STARVATION RESERVOIR: Reservoir is iced over; some ice fishing activity was noted but few reports on success rates. Starvation Perch Search: on Thursday January 31, biologists, park personnel and anglers saturated the ice in an attempt to locate the yellow perch. This excellent summer fishery seems to disappear under the ice so we tried to find out where they go. A few fish were located in several areas including Saleratus Wash, under the bridge and in Indian Bay in 20 to 45 feet of water. Another expedition did not find fish in Rabbit Gulch but two more recent angler groups reported finding yellow perch in Rabbit Gulch and off Rabbit Point in 45 to 65 feet of water. Check ice conditions carefully as the ice along the edges

will be thinner due to water filling the reservoir also expect thinner ice in the deeper areas near the inlet or along the main channel.



STEINAKER RESERVOIR: Reservoir has good ice and we've been getting numerous reports on the good fishing for rainbows and a few nice browns. Anglers should check ice conditions carefully before going out. Reservoir is being filled which will make the ice edge thinner and some area froze almost a month before other areas.

UINTA MOUNTAIN LAKES AND STREAMS: No new reports. Lakes and streams have ice but check it carefully before venturing out. Area has received several snowstorms. Ice fishing on high elevation lakes and reservoirs is

also almost always good. Fishing success on mountain lakes and streams can be spotty so if one isn't producing try moving to another. With over 400 managed fisheries on the South Slope alone, it's easy to find a new place to fish. Always go prepared for serious weather, as the Uinta Mountains are well known for frequent unexpected storms and high winds. Note: The Uinta Mountains have a four-trout limit with a bonus of four more brook trout—see proclamation for details.

CLEVELAND RESERVOIR: There's no lakeside parking, due to a wall of snow on either side of Highway 31. Anglers need to snowmobile from the Miller Flat

parking area. Try chartreuse PowerBait, molded onto a cheese hook for best results. Suspend the bait five feet from the bottom.

GIGLIOTTI POND: Two weeks ago, Casey Olsen and Roy Marchant fished the pond. Using Velveeta cheese, they caught five trout. Through an underwater camera, they observed a lot of trout. Unfortunately, the fish seemed uninterested in most types of bait they presented.

HUNTINGTON CREEK: In open water stretches, fly fishermen might try Montana nymphs, San Juan worms or hares ears. Baitcasters will do best with worms.

HUNTINGTON RESERVOIR: (also known as Mammoth Reservoir) There's a 10-foot wall of snow on each side of the highway bordering the reservoir. The parking space by the restroom is limited as well. Try a 1/8-ounce chartreuse jighead, tipped with half a nightcrawler. Keep the bait moving. The bite will be very light. This reservoir is closed to the possession of cutthroat trout or trout with cutthroat markings.

JOE'S VALLEY RESERVOIR: The ice is about 20-inches thick. Early this month, fishing was good with hot pink octopus jigs, hooked onto chub meat. A jig, tipped with mealworms or salmon eggs, is a good standby. Try a gold attractor spoon over the terminal bait.

LAKE POWELL: Visit www.wayneswords.com for the latest fishing report, provided by Wayne Gustaveson, DWR project leader.

LASAL MOUNTAINS: Mountain lakes remain snowbound. Access is limited to snow machines. Anglers, fishing Ken's Lake, should try small jigs, tipped with a nightcrawler. Trout range from eight to 16 inches.

MILLSITE RESERVOIR: Volunteer Services Coordinator Randall Stilson checked anglers last weekend. He described fishing as slow. Rainbows were 12 to 13 inches. The best terminal tackle was a white jig, tipped with a mealworm or piece of nightcrawler.

SAN JUAN COUNTY: No recent report. Try PowerBait or worms at Blanding #3 and #4.

SCOFIELD RESERVOIR: Randall Stilson interviewed anglers last Sunday and rated fishing success as fair. The most successful anglers used white, yellow or

green jigs, tipped with salmon eggs, mealworms, or dead minnows. Lake access is difficult, due to snow and slush on the ice, which is 20+ inches thick. Most trout ranged from 13 to 18 inches, except for one cutthroat, which ran 23 inches. OHV and snow machine users are getting bogged down frequently.

On Feb. 10, an angler placed a report on www.BigFishTackle.com that he and his partner had hiked a third of the way to the island. They fished in eight feet of water with an ice fly, tipped with a crawler. They caught limits of cutts and bows that were 16 inches or better. Smaller fish were thrown back.

Spring fishing at Lake Powell

Long-time biologist gives his predictions



PAGE, ARIZ. — Lake Powell is one of Utah's best fishing waters. And no one knows how to catch fish in the lake better than Wayne Gustaveson, the Utah Division of Wildlife Resource's long-time biologist at the lake.

Here's Gustaveson's tips and advice for fishing Lake Powell this spring:

Gustaveson says striped bass populations are near the bottom of their "boom and bust" cycle. That means populations will be rebuilding, and young stripers will dominate the catch.

Smallmouth bass populations lag a year or two behind the stripers. Gustaveson says the bass you catch will be a balanced population of both young and old fish.

"Other fish species are less abundant than the "big two," so it's almost impossible to predict subtle changes in how many there will be and how fast you'll catch them," Gustaveson says.

Runoff is the second major factor that will determine what fishing is like this spring. Spring inflow has been modest the past few seasons. But this winter's snow pack is building, and more storms are on the way.

Gustaveson says it's possible that water level increases in 2008 could be similar to 2005, when the lake level increased by more than 40 feet. The additional water will spread the shad in the reservoir out. "Fishing results will be similar to 1999, when shad abundance was small," he says.

Gustaveson says the largest variable can't be estimated. "That's the effect of storm fronts that cool the water and drastically impact fishing success for a three- to five-day period following the storm," he says. "Remember that warming periods usually provide the best spring fishing, regardless of the phase of the moon.

"With that introduction, this is my best guess on fishing prospects for 2008," Gustaveson says:

Fishing success for striped bass and walleye will improve in late **February**. The best early success will be found near where the Colorado and San Juan rivers flow into the reservoir. Fishing across the lake will improve in the backs of canyons rather than in the main channel. Slow trolling (2 mph) is the most effective technique.

March fishing success will be punctuated by spring storms that will make fishing success spotty. Some of the best largemouth bass fishing is found on warm March afternoons in shallow coves that have brush in them. Because shad will be scarce, crayfish will be the prey the fish will seek the most. Fishing bottom-bouncing grubs in rocky structure is the best way to imitate crayfish. Stripers on a crayfish

diet are extremely susceptible to anchovy bait. You'll catch more stripers in the main lake if you fish with bait. At the inflow area, trolling and casting produce the most fish.

Smallmouth bass and striped bass fishing will improve in April. Search for both species in the murky colored water in the backs of the canyons. Remember that clear water is colder. Clear water won't provide good fishing until it warms above 60 degrees.

The best spring fishing will occur in late **April** when the water is warming but runoff hasn't significantly increased the lake level yet. Expect bass to spawn the third week of April. During this time, you can actually see bass building nests on the shallow shoreline. Striped bass will be in the same canyon locations that the bass are in, but they'll be in deeper water just off the edge of the spawning flats. In those special years when bass spawning happens before the lake rises, fishing success is beyond belief. If the snow melts early, this event won't happen. Expect the lake to be rising rapidly by the fourth week of April. The runoff will muddy the water all the way to Bullfrog by mid- to late-May. When the northern waters get muddy, fishing for most species is better south from Bullfrog to Padre Bay.

May is the very best month to catch **walleye**. The warming water increases their metabolism and forces them to feed during the day. Walleye like murky water. Most of the walleye are north of Bullfrog.

Striped bass will be caught half way between the back of the canyon and the main channel. The lack of abundant shad in the canyon will move stripers toward the detectable current of the main channel in April and May. Striper fishing success by numbers will certainly be less, maybe much less, than seen in the record-breaking harvest years of 2005 to 2007. It will be challenging to finding moving schools of stripers, but once you've located a school, the fish will be cooperative. You'll catch fewer fish, but the condition of the stripers will be dramatically better.

For more information including updated fishing reports visit www.wayneswords.com.

Fishing Clubs Still Need Volunteers

Help especially needed in Syracuse, Clearfield, Kaysville and Nephi

Want to help a group of kids have one of the best experiences they'll have all summer?

Then sign up to become a youth fishing club volunteer!

The Division of Wildlife Resources is looking for volunteers to teach 6- to 13-year-olds about fish, the places fish live and how to catch them.

Adult volunteers are needed in communities stretching from Logan to Washington City. The following communities are still looking for volunteers to help in their clubs:

Logan (two clubs)
Brigham City (one club)
Ogden (one club)
Roy (one club)
Clinton (two clubs)
Syracuse (one club)
Clearfield (one club)
Kaysville (one club)
Bountiful (two clubs)
Murray (two clubs)
Riverton (one club)
South Jordan (one club)
Highland Glen (one club)
Orem (one club)
Spanish Fork (two clubs)
Saratoga Springs (one club)
Payson (one club)
Nephi (one club)
Washington City (one club)



Anyone can help

While all of the clubs need volunteers, help is especially needed in Syracuse, Clearfield, Kaysville and Nephi.

Volunteer training takes only a single evening to complete. Depending on the community, the one-evening trainings will take place between now and mid-April.

If you'd like to volunteer, please e-mail Chris Penne before March 1 at chrispenne@utah.gov.

"You don't need a lot of fishing experience to volunteer," says Penne, the DWR's community fisheries coordinator.

"If you have a positive attitude, patience and good communication skills, you have everything we're looking for. We'll teach you everything else you'll need to know to have a great experience with these kids."

Penne says a number of rewards await those who volunteer.

"One of the biggest thrills you'll have is seeing the look on a young one's face when they reel in their first fish. Experiencing that will make your whole summer," he says. "Helping connect today's youth with the natural world around them is also something that our volunteers find rewarding."

What you'll do

The clubs meet at the fishing pond in their community for six to eight weeks. The children spend the first 30 minutes of each two-hour class learning about fish, how to catch them and about the fishes' habitat. Then the adult volunteers take the kids to the pond and help them use their new skills to catch fish.

"2007 was our most successful year yet," Penne says. "About 3,000 kids and 270 volunteers participated in the six-week program. Many of the volunteers were folks who had volunteered the year before. After seeing the positive influence they had the kids, they wanted to help in the program again."

UPCOMING UTAH STATE PARKS EVENTS

March 1 Rock Cliff Nature Center/Jordanelle State Park - Francis

Track Me If You Can: Join the park naturalist at Rock Cliff Nature Center from 10 a.m. to noon to learn about animals who live in the park. Begin indoors and learn how to identify animal tracks and end with an hour animal tracking walk.

Snowshoes are available and day-use fees apply. Registration is required and limited to 20 participants. (435) 649-9540

March 1 Snow Canyon State Park - Ivins

Lava Tubes Tour: Join park staff at 10 a.m. for a two-mile, round-trip hike and a chance to explore the unique formations of a lava tube. Space is limited and registration is required. (435) 628-2255

See thousands of snow geese

Snow Goose Festival set for Feb. 29 and March 1 and 2

DELTA — Those who have watched snow geese fly in and out of Gunnison Bend Reservoir call it one of the greatest spectacles of nature.



Thousands of snow geese at Gunnison Bend Reservoir.

Photo by Lynn Chamberlain

You can see that spectacle Feb. 29, and March 1 and 2, at the Eleventh Annual Snow Goose Festival. The festival will be held at and near the reservoir, just west of Delta. Admission is free.

As many as 10,000 snow geese have been at the reservoir during past festivals. Except for the black tips on their wings, snow geese are pure white.

"Spotting scopes will be available so you can get a close look at the geese. We'll also be available to answer any questions you have," says Bob Walters, Watchable Wildlife coordinator for the Division of Wildlife Resources.

Free wildlife seminars, and arts and crafts and photography exhibits, will also be offered on Saturday, March 1.

The best times to view

The areas where you can see the geese vary according to the time of the day.

"Early in the morning, the geese are usually feeding in fields that surround the reservoir. They usually stay in the fields until about 10:30 a.m. Then they take off and fly back to the reservoir," Walters says.

"They usually spend the next few hours on the reservoir. Then, between about 4 to 6 p.m., they take off again and fly out to the fields."

DWR biologists will watch which fields the geese fly to. If you arrive after the geese have left the reservoir, the biologists will direct you to the fields where the geese are.

Festival tips

Use binoculars or a spotting scope to view the geese. If you get too close to the geese, you could scare them away.

If you pull off the road to view the geese, pull as far off the road as you can and watch for cars.

The weather could be cold or wet. Make sure to wear the proper clothes.

For more information about the 2008 Snow Goose Festival call Walters at (801) 538-4771; the Division of Wildlife Resources' Southern Region office at (435) 865-6100; or the Delta Area Chamber of Commerce at (435) 864-4316.

News from the Monolithic Dome Institute

It's Monolithic Conference time, and the deadline for the special hotel rate is fast approaching. In fact, to get the discounted price of \$119/per night at the Wyndham DFW Airport North Hotel in Irving, Texas, you must register with the hotel by February 21, 2008.



<http://www.monolithic.com/conference/2008/intro/>

Set for March 7 and 8, the theme of our 14th Annual Monolithic Dome Conference is "A Brighter Way To Save."

<http://www.monolithic.com/conference/2008/schedule/>

Registration and a General Assembly will get things rolling at 8 am on Friday, March 7 at the Wyndham. Then it's off to your personal choice of informative presentations.

This year's speakers and topics include:

* Chris Zweifel, Consulting Engineer at ZZ Consulting in Shelley, Idaho
- "How to Get Engineering"

* Architect Rick Crandall of Crandall Design Group in Mesa, Arizona
"Entertainment Domes"



* David B. South,
President of
Monolithic -
"Energy
Efficiency" and
"How to Start a
Monolithic Dome
Business"

* Larry Byrne,
Vice President,
Monolithic -
"Monolithic 101"
and "Monolithic
102"

- * Randy and Andrew South, President and Vice President of South Industries, Inc. in Menan, Idaho - "Road to a Dome" and "New Buildings-Castle Wall"
- * Nanette South Clark, Engineering Analyst, Monolithic - "Finite Element"
- * Michael South, Vice President, Monolithic - "Equipment Discussion"
- * Gary Clark, Vice President, Monolithic - "Openings and Coatings"
- * Connie Giffin, Mountain Classic Mortgages - "Financial Talk"
- * Dr. Arnold Wilson, Senior Consulting Engineer (retired), Monolithic - "Trailblazing"
- * Keith Wortman - "Success Story: How a Dream Came True"

This exciting day will conclude with a banquet and Keynote Speaker David B. South.

On Saturday, March 8, Conference attendees will travel to Italy, Texas for a



conducted tour of Monolithic's headquarters and several domes.

Check It Out - For the latest on Monolithic Domes and related topics, check our website. New articles, profiles and discussions, as well as updates of old ones, are posted often. <http://www.monolithic.com/>

Drilling Near Famed Spiral Jetty Under Review

The Utah Department of Natural Resources' Division of Oil, Gas and Mining is

analyzing two applications to drill for oil in the north arm of the Great Salt Lake. The proposed site is about five miles from a world renowned earthwork sculpture known as the Spiral Jetty.

While drilling in the Great Salt Lake is relatively uncommon, it is not rare. Almost 40 wells have been drilled within five miles of the Spiral Jetty, most prior to the creation of the Jetty. “This is not a rubber stamp process. Our department works on a daily basis to protect new and ancient cultural resources, including the Jetty,” explained DNR Executive Director Michael Styler. “Drilling in the Great Salt Lake has special requirements: spill control, blowout prevention and other safeguards,” he

added. The Spiral Jetty was built within a short walk of numerous abandoned oil wells and naturally occurring oil seeps in the area of Rozel Point.



Constructed on state sovereign land in 1970, the Spiral Jetty

has found a place in the hearts of art lovers around the world. That interest has resulted in more than 3,500 public comments expressing concern about the proposed drilling. The earthwork, built using basalt rock and earth from the site, forms a coil about 1,500 feet long and 15 feet wide.

“The Spiral Jetty is an historic piece of earth art, a treasure for the state of Utah,” said Palmer DePaulis, Executive Director of the Utah Department of Community and Culture. He added, “We have partnered with other state agencies to do all that we can to assure public trust is honored, the Jetty is protected, and all voices are heard in this rigorous process.”

While exploration drilling is being conducted, the drilling equipment may be

visible from the Jetty for up to two weeks. However, after a well is drilled, the equipment will be removed, restoring the views.

“We certainly share the concern of art lovers for the work and in recent years have enhanced the site by reclaiming the abandoned wells and the facilities in the area,” said Styler.

An extended public comment period closed February 13, 2008. The Division of Oil, Gas and Mining will carefully consider all concerns and is expected to complete the permit review process in 30 to 45 days.

Results of Utah BLM Quarterly Oil and Gas Lease Sale

Salt Lake City, Utah—February 19, 2008—The Bureau of Land Management (BLM) offered and sold 52 parcels, totaling 75,615.46 acres of federal land at the Utah quarterly oil and gas lease sale conducted today at the BLM Utah State Office. During the oral auction, BLM received a total of \$3,519,914.00 in bonus bids for the federal oil and gas lease rights on 52 parcels involving nearly 76,000 acres of Utah land. In addition to the bonus bids, the sale netted \$113,442.00 in first year’s rental and \$7,280.00 in administrative fees, for \$3,640,636.00 in total revenues from this lease sale. Additionally, spirited bidding resulted in substantial per acre bids on several undeveloped parcels in Rich County.

Bids ranged from the minimum of \$2 per acre to \$1,025.00 per acre and averaged \$46.55 per acre. Bro Energy, of Salt Lake City, submitted the highest total bid per acre in the amount of \$1,025.00 on parcel UT0208-008 containing 120.00 acres and located in Carbon County. Stonegate Resources, of Park City, Utah, submitted the highest total bid per parcel in the amount of \$454,500.00 on parcel UT0208-016 containing 1,817.57 acres and located in Uintah County.

February 2008 Utah Competitive Sale Results Summary	
Parcels Offered	52
Parcels Sold	52
% Parcels Sold	100%
Acres Offered	75,615.46
Acres Sold	75,615.46

% Acres Sold	100%
Average Bid/Acre (For Acres Offered & For Acres Sold)	\$46.55
Average Bid/Parcel (For Acres Offered & For Acres Sold)	\$67,690.65
Highest Bid/Acre:	\$1,025.00
Parcel with High Bid/Acre:	UT0208-008
Highest Bid/Parcel:	\$454,500.00
Parcel with High Total Bid	UT0208-016
Total Bonus Bid	\$3,519,914.00
Total Rental Due	\$113,442.00
Total Administrative Fees Due	\$7,280.00
Total Receipts Due	\$3,640,636.00

BLM Announces Public Comment Period for Little Canyon Unit Environmental Assessment

Vernal, Utah—February 15, 2008—The Vernal Field Office (FO) of the Bureau of Land Management (BLM) announces the public comment period for the Little Canyon Unit Environmental Assessment (EA). The EA describes the potential impacts of a proposal to develop 510 natural gas wells from 362 well pads with associated production facilities. The proposal, submitted by XTO Energy, Inc., includes 77 miles of roads, 109 miles of pipelines (following new or existing roads), and the addition of 11,500 horsepower to an existing compressor. The project area encompasses a total of 33,241 acres and the proposal estimates surface disturbing activities could occur on about 5.7 percent (1,882 acres) of the entire project area, which includes BLM, State, private, and Reservation land in the Hill Creek and Willow Creek areas.

A compact disk or hard copy of the document may be obtained from the BLM or available on-line at <http://www.blm.gov/ut/st/en/fo/vernal/planning.html>.

The public is encouraged to submit comments on this EA. Comments should be as specific as possible, with references to page numbers and chapters. Comments that contain only opinions or preferences will not receive a formal response, but will be

considered as part of the BLM decision-making process. Written comments will be accepted by fax, email, or letter. Send all comments by March 19, 2008, to:

Bureau of Land Management
ATTN: Stephanie Howard
170 South 500 East
Vernal UT 84078
Fax: 435-781-4410
UT_Vernal_Comments@blm.gov

Before including address, phone number, e-mail address, or other personal identifying information in comments, be aware that the entire comment - including personal identifying information - may be made publicly available at any time. While individuals may request the BLM withhold personal identifying information from public review, BLM cannot guarantee this information will be withheld. BLM will not consider anonymous comments. All submissions from organizations and businesses, and from individuals identifying themselves as representatives or officials of organizations or businesses, will be available for public inspection in their entirety.

For further information please contact Stephanie Howard, Environmental Coordinator, at (435) 781-4469.

BLM Utah Public Meetings on Draft Oil Shale and Tar Sands Planning Document Open Houses Scheduled in Salt Lake City, Price, and Vernal

The Bureau of Land Management has scheduled a series of informal public meetings to provide additional information on the Draft Resource Management Plan Amendments and Programmatic Environmental Impact Statement (Draft PEIS) for the development of Utah oil shale and tar sands resources, which fall within the jurisdictions of the Moab, Monticello, Price, Richfield, and Vernal Field Offices, and the Grand Staircase—Escalante National Monument. The Draft PEIS, which was published on December 21, 2007, remains open for public comment through March 20, 2008.

Each informal open house style meeting will feature information stations staffed by resource specialists. Those attending the meeting will be able to visit stations of interest and get information on how particular analyses were developed, what impacts or potential impacts and the associated mitigation were identified,

and speak with the resource specialists and agency representatives present.

Utah open houses will be held on these dates in the following locations:

February 25, 2008	Salt Lake City, Utah BLM Salt Lake Field Office 2370 South 2300 West, Salt Lake City	2-4 pm and 6:30-8:30 pm
February 26, 2008	Price, Utah Holiday Inn 838 Westwood Boulevard, Price	6:30-8:30 pm
February 27, 2008	Vernal, Utah Western Park Convention Center 302 East 200 South, Vernal	6:30-8:30 pm

The Preferred Alternative in the Draft PEIS would amend BLM land-use plans to allocate approximately 1.9 million acres of public lands in Utah, Colorado, and Wyoming for potential commercial oil shale development and approximately 430,000 acres in Utah for tar sands development. Between 305,000 and 1.5 million acres of BLM-managed lands would be excluded from oil shale leasing under the alternatives presented in the Draft PEIS.

The complete Draft PEIS is available in electronic form (PDF) on the project Website, <http://ostseis.anl.gov>. Paper and CD-ROM copies of the Draft are also available at the BLM

State Offices in Colorado, Utah, and Wyoming; and BLM Field Offices in Vernal, Price, Richfield, and Monticello, Utah; Meeker, Glenwood Springs, and Grand Junction, Colorado; and Kemmerer, Rawlins, and Rock Springs, Wyoming. The comments may be submitted electronically through the website, or may be mailed to: BLM Oil Shale and Tar Sands Resources Draft Programmatic EIS Comments, 9700 South Cass Avenue, Argonne IL 60439.

The BLM previously issued six 160-acre leases for oil shale projects on public lands in Utah and Colorado under its research development and demonstration (RD&D) program. Information available from these projects is included in the PEIS and was considered during development of the alternatives presented in the Draft. For additional information on the BLM's efforts to develop federal oil shale and tar sands resources, visit

http://www.blm.gov/wo/st/en/prog/energy/oilshale_2.html.

Further information and updates on the status of the review process is available at: <http://gsldrilling.utah.gov/>

WIND ENERGY PROGRAM TO LOAN FREE WIND-MEASURING DEVICES

Salt Lake City, Utah - Does it seem like the wind always blows over your school, farm or private property? If so, there might be potential for wind power development. The Utah Geological Survey (UGS), through its State Energy Program, will loan wind-measuring devices to landowners, schools, farmers and other property owners throughout Utah. The devices, called anemometers, help determine if the wind is strong enough for energy development. The devices are loaned at no cost to the participant.



“We are looking for as many as eight sites with strong, consistent winds that could be developed commercially or for private use,” said Jason Berry, Renewable Energy Coordinator. “We are specifically looking for potential sites along the Utah-Wyoming border in Rich and Summit Counties as well as other areas in southwestern Utah.”

The UGS, with the support of the U.S. Department of Energy’s Wind Powering America Program, installs 20-meter or 50-meter anemometer towers with monitoring equipment for a period of one year for qualifying applicants.

The State Energy Program’s Anemometer Loan Program helps Utahns take the guesswork out determining if wind power development is feasible. Data collected will measure wind speed and wind direction, and the frequency at which each occurs. The data also helps the UGS better understand the nature of Utah’s wind resource.

Program participants are required to mail a data plug monthly to the State Energy Program and, in return, participants receive a monthly data analysis report. At the

end of the loan agreement the State Energy Program will provide the participant with a final report informing the participant of the feasibility of small or large-scale wind development on the participant's property.

The deadline for applications is March 1, 2008. For more information, or if you are interested in obtaining an application and applying online, please visit <http://geology.utah.gov/sep/wind> and click on the Anemometer Loan Program button, or contact Jason Berry, Renewable Energy Coordinator, at (801) 538-5413 or at jasonberry@utah.gov.

Live Eyewear showcases polarized sunwear

San Luis Obispo, CA – The new Quattro polarized performance sunwear collection



from Live Eyewear is specifically designed to protect the eyes from harsh glare and damaging UV rays while improving contrast and visual acuity. The polarized PolaréPC polycarbonate lens system allows avid outdoor enthusiasts to protect their vision without

sacrificing style. Sport inspired, full wrap frames provide complete protection while maintaining comfort and peripheral vision. Quattro has scratch resistant lenses and ultra lightweight frames that are backed by a limited lifetime warranty. Each pair includes a micro fiber carrying case that can also be used as a cleaning cloth. Quattro has a manufacturer's suggested retail price of \$49.95.

Dave Dean, Live Eyewear Vice President of Marketing, comments, "Sunglasses are an essential part of all of our lives, especially individuals who spend long hours outside dealing with intense glare and harmful UV rays.

Quattro helps the eyes remain relaxed, focused and protected from eyestrain for extended periods of time." Quattro delivers optimum comfort, style and performance utilizing extremely lightweight, full wrap designs available in black, brown and tortoiseshell.

The Quattro PolaréPC lens system features 8 base polarized, impact resistant polycarbonate lenses that deliver crystal clear visual acuity and include a bonded hard coat to resist scratching. Extremely durable and optically

correct, PolaréPC lenses precisely regulate light transmission, filter out damaging ultra-violet rays and eliminate harsh reflected surface glare, providing the wearer with an uninhibited visual advantage. The polarized PolaréPC lenses are available in natural color definition gray or contrast enhancing copper lens options to maximize visual performance in varying ambient light conditions.

In addition to Quattro, Live Eyewear offers a full range of sunwear styles designed to be worn over glasses, including Cocoons, Cocoons Clip-Ons and Vistana. All Live Eyewear sunglasses are designed to isolate the eyes from a number of harsh outdoor elements, such as damaging UV light, harsh glare, wind and other airborne irritants. The patented styles protect the eyes from the top, sides and bottom, providing 40% more protection from damaging UV rays than standard sunglasses. Each frame is backed by a limited lifetime warranty and includes a custom case and lens cloth.

For additional details, contact Live Eyewear at 800.834.2563 or www.liveeyewear.com

Utah's State Forester Among Those Upset Over Proposed Federal Budget Cuts

Salt Lake City, Utah -- Utah State Forester Dick Buehler is concerned about the President's proposed FY09 budget cut of up to 60 percent in state and private forestry programs.

“The State has been receiving pass-through funds from the Forest Service through State & Private Forestry for at least 50 years,” said Buehler. “The federal program provides technical assistance and funding to States who manage two-thirds of the nations forest lands.”

The programs most directly affected by the money are community forestry (managing the forests within our communities), community fire assistance (purchase of equipment and training to bolster local fire protection), forest stewardship (assistance to private landowners in managing their forest land), National Fire Plan (money that provides fuel mitigation and management along with defensible space to protect wildland subdivisions, watersheds, and reduce suppression costs), forest health (insect and disease mitigation and control), and forest legacy (provides funding to purchase conservation easements to protect forest lands from development and to insure valuable watersheds are protected).

For further information and details of the proposed budget, please refer to the following website:

<http://www.ens-newswire.com/ens/feb2008/2008-02-07-02.asp>

WaveSpin Reel wins *Field & Stream* Magazine's prestigious 2008 BEST of the BEST Award Third honor for company that's less than one- year old

PORT RICHEY, Fla. In horse racing the Triple Crown is the pinnacle of achievements for three-year-olds.

For a company less than a year old, WaveSpin Reels winning its third and latest accolade feels like winning that ultimate title especially against big-name companies in the fishing tackle industry.

The latest was *Field & Stream* Magazine's prestigious 2008 BEST of the BEST Award in the March issue in which the editors of the 112-year old publication said "**Doug Hannon's** WaveSpin Reels are a radical design at a time when innovation in spinning is hard to find."

Only two months before the modestly priced reels (the DH 3000 is \$79.95), also got an honor from *Outdoor Life* Magazine when fishing editor **Jerry Gibbs** wrote that the reel represents the first significant improvement in salt- and freshwater spinning-reel design in more than 50 years. What sets the WaveSpin apart from its competitors is that it's virtually impossible for the line to birdnest during a cast.

And in January, *TackleTour.com* presented the reel with its Innovation Award.

When it comes to the recognition and accolades this reel has received, the word gratification would be a serious understatement, Hannon said. Beyond those, we have experienced volumes of comments, web postings, and phone calls all attesting to the fishing public's new love affair with this WaveSpin technology. Most rewarding is when someone says I have made it possible for them to enjoy fishing with their child or spouse, due to the trouble free functionality of this reel. We are bringing new people into fishing. I have come to realize in the end that WaveSpin represents an improvement that will never be improved upon, because it completely solves the problem.

Hannon, who one scribe has called the Thomas Edison of fishing, holds 16 patents most in the outdoor arena including his weedless propeller, an advancement that effectively revolutionized the trolling motor industry. His



innovations was one reason *Outdoor Life* honored Hannon as one of 25 people having the greatest positive influence on hunting and fishing.

His latest invention, the WaveSpin spinning reel is receiving high praise with its patented spool that makes loops irrelevant with either monofilament or braided lines.

Unlike the smooth lip on all other spinning reels, the WaveSpin reel features 16 smoothly rounded teeth or waves -- on the spool lip which completely eliminate the eruption of a birdnest due a loop or loops that may have been retrieved onto the spool. During casting looped line lies harmlessly between the waves on the spool and simply unwinds on the next cast unnoticed and without creating tangles of any kind. Even if a loop lies on the spool instead of between the waves, the patented design still allows the line to cast freely.

Put to the test by Gibbs and some "pretty vile casters," he said Hannon's latest creation lived up to its claims.

Hannons WaveSpin is marketed by XXX-Stream Tackle through a growing number of major sporting and fishing goods stores (Cabelas and Gander Mountain) along with direct sales on its website www.wavespinreel.com. For information on WaveSpin please contact **Russ Riley**, VP of Operations, at: 989-967-8426 or via e-mail at investrepo@hotmail.com.

Nebraska Governor Signs Law to Increase Hunter Recruitment

(Lincoln, NE) - A Families Afield bill that will help to ensure the future of our hunting heritage has been signed into law by Governor Dave Heineman.

The measure, LB 690 introduced by Sen. Deb Fischer, I-Valentine, creates an apprentice hunter education exemption certificate allowing experienced hunters the ability to take a newcomer hunting before the completion of a hunter education course. The bill also lowers the deer hunting age for mentored youth from 12 to 10.

“This law opens the door for the next generation of hunters in Nebraska,” said Governor Heineman. “It is critical to the future of conservation and Nebraska’s great hunting heritage.”

The Families Afield campaign was established by the U.S. Sportsmen’s Alliance, National Shooting Sports Foundation, and National Wild Turkey Federation in 2004 to urge states to eliminate unnecessary hunting age restrictions and ease hunter education mandates for first-time hunters.

“Nebraska continues to show a strong commitment to the next generation of hunters,” said Bud Pidgeon, USSA president. “The Families Afield initiative allows tomorrow’s hunters to take to the field today while safely experiencing and enjoying our outdoors heritage.”

The U.S. Sportsmen's Alliance, National Shooting Sports Foundation, and the National Wild Turkey Federation worked with the National Rifle Association and local sportsmen’s organizations, to ensure the passage of LB 690.

“The NWTF’s grassroots network of volunteers in Nebraska should be commended for their work in the passage of this legislation,” said Rob Keck, NWTF CEO. “Their dedication to creating opportunities for new hunters has paid off.”

Lawmakers in Indiana, Virginia, Wisconsin, South Dakota, Arizona and Oklahoma are also considering Families Afield style legislation this year. Available data from states that have implemented Families Afield initiatives reveals that apprentice hunting license programs brought over 34,000 new hunters, both children and adults, to the field.

“Ultimately parents know far better than the government when their sons and daughters are ready to begin hunting,” said Chris Dolnack, Senior Vice President of the National Shooting Sports Foundation. “This new law gives families the tools to successfully pass our hunting heritage to the next generation.”

The U.S. Sportsmen’s Alliance is a national association of sportsmen and sportsmen’s organization that protects the rights of hunters, anglers and trappers in the courts, legislatures, at the ballot, in Congress and through public education programs. For more information about the U.S. Sportsmen’s Alliance and its work, call (614) 888-4868 or visit its website, www.ussportsmen.org.

Tourism Advertising & Marketing Contest now Accepting Entries

The Utah Office of Tourism and the Utah Tourism Industry Coalition are now accepting entries for the Third Annual Utah Tourism Advertising & Marketing Contest. The contest will celebrate Utah’s best in tourism marketing, and winners will be announced at the Utah Tourism Conference on Friday, May 14, 2008, at the Hilton Salt Lake City Center.

Each entry will cost \$25 and organizations may submit a total of five entries. The contest is open to Arts/Cultural Organizations/Businesses, Destination Marketing Organizations (CVBs, County Travel Councils, Travel Regions, etc.), Hotels/Motels/Bed & Breakfast Inns, Ranches/Lodges, Restaurants, Shopping/Specialty Stores, Ski Areas/Mountain Resorts, Sports/Recreation/Guides & Outfitters, and Transportation Services.

The entry form for the Advertising and Marketing Contest can be found online at or by contacting Rebecca Katz at the Utah Office of Tourism at (801) 538-1479 or or rkatz@utah.gov.

Bass anglers Kriet and Faircloth join Sébile pro team

Sébile, one of the hottest new international bait brands in the United States, has announced the addition of two professional bass anglers to its U.S. pro fishing team - Jeff Kriet and Todd Faircloth.



"Jeff and Todd are not just good fishermen, they are also good guys and that's important to us," said Sébile's U.S. sales and marketing director Keeton Eoff in making the announcement.

"Both men have qualified for the Bassmaster Classic annually for the past few years and they are back in it again in '08. They are truly among the country's elite anglers and we're proud to have them on our team."

Kriet is from Ardmore, Okla., and Faircloth resides in Jasper, Texas. Both anglers travel the country

fishing the BASS Elite series tournaments and other high profile events, and both have been especially successful in their pro angling careers in recent years. Each has won more than one-half million dollars in

tournament earnings, and both have won a major BASS event. And the two anglers are usually among the elite few who always seem to be at top in contention for the prestigious BASS Angler-of-the-Year title every year.



"Sébile baits caught my eye when they first hit the market here a couple of years ago and I've been throwing them ever since," Kriet said. "I love to fish hardbaits. Their brand new square-billed Crankster is awesome and is going to win me a lot

of money this year. I definitely see it having a role in my Classic appearance on South Carolina's Lake Hartwell."

Faircloth echoed his fellow angler's sentiments, saying he has been using Sébile baits for awhile now with great success. "You don't live where I do in south Texas without having a lot of confidence and expertise in fishing crankbaits," he said. "Sébile baits offer a truly unique approach in their designs. The Blood Red series in particular has become a fast favorite because it combines visual appeal with realistic motion, and I'm always looking for every advantage I can get."

Sébile baits are named after international angler and lure designer Patrick Sébile. The Frenchman has spent a lifetime studying gamefish and their feeding habits. He has paid special attention to the sounds, shapes and swimming actions that trigger strikes the most, and that's the premise behind every bait in the Sébile lineup. All of the company's baits fall into one of two series: Evidence or Possessed.



Baits in the Evidence series rely more on their action than light and sound. Baits in the Possessed series are built around design features that provide lifelike baitfish mimicry through unique use of internal "body fluids" and reflective particles suspended in it.

Sébile's "Blood Red" baits take baitfish motion and mimicry to a whole new level in artificial lures. The special red-colored fluid literally creates motion, visually and physically, as energy is transferred fore and aft while the lure is being fished. Because of the energy transfer that occurs, Blood Red baits continue to quiver, tremble and pulsate just like a frightened baitfish, at rest as well as during retrieve.

Follow the tournament success of new Sébile team anglers Jeff Kriet and Todd Faircloth along the BASS Elite trail at www.bassmaster.com. For more information on Sébile baits and colors, visit www.SebileUSA.com.