

Plenty of Snow at Brian Head

Happy Holidays! Brian Head Resort has received 20" of new snow in the past 24 hours! Current base depth is 40", and we're expecting more snow today. Chairs 1, 3, 4, 5, 6 and 8 are running today with 37 runs open, and terrain parks off Chair 3. Lift tickets today are \$40 for adults, and \$27 for children and seniors. Children age 5 and under ski free with a ticketed adult.

Join us for the Christmas holiday from tomorrow, December 22, through January 6! Chairs 2 and 7 are expected to open tomorrow, as well as the Tubing Hill. Night skiing will run nightly from tomorrow night through the evening of January 6, from 3:30 p.m. to 9:00 p.m. Night tubing will run nightly beginning tomorrow night through the evening of January 6 from 4:00 p.m. to 8:00 p.m. After January 6, both night skiing and tubing will be open on Friday and Saturday evenings only.



Santa hits the slopes on Christmas Day, and will be visiting Navajo and Giant Steps, and skiing around the new terrain. Bring your little ones to meet him!

See our website at www.brianhead.com for more information.

Teach others about birds and the Great Salt Lake

Chance to see bald eagles part of Jan. 5 training

FARMINGTON — If you're passionate about birds and the Great Salt Lake and you want to share your passion with others the Division of Wildlife Resources wants you in its Farmington Bay Volunteer Naturalist program.

Volunteer taking flight during a wetlands training day.

You can learn more about the program and other volunteer opportunities with the DWR at a workshop on Jan. 5.

The workshop will be held from 10 a.m. to 12:30 p.m. at the Great Salt Lake Nature Center. The center is located at the Farmington Bay Waterfowl Management Area, 1700 W. Glover Lane (925 South) in Farmington.

"Our volunteers get to play in puddles, see some amazing birds, and share their excitement with scouts and school groups," says Justina Parsons-Bernstein, director of the Great Salt Lake Nature Center. "If you can tell the difference between a cinnamon teal and a great blue heron, or if you want to know the difference, you're the kind of person we're looking for."



Here's what you can do in the following DWR programs:

Farmington Bay Volunteer Naturalist—take people on fun field trips and nature tours. You'll also get to help the staff at the nature center teach school groups about birds and the Great Salt Lake. The staff will teach you about wetland ecology, how to identify birds and how to share what you've learned with others.

Photo by Justina Parsons-Bernstein

Wild Guides Naturalist—this brand new program will give you a chance to get into your community and teach eight- to nine-year-olds about wildlife and the places wildlife live. The DWR will provide you with all of the lesson plans you'll need. You'll also receive neat items to show the kids, including snowshoe hare pelts, and elk and deer antlers.

Community Fishing—teach kids in youth fishing clubs about fish and how to catch them. The clubs meet in the spring at community fishing waters in Utah.

Watchable Wildlife—staff booths at wildlife festivals in Utah. You'll learn more about Utah's wildlife, and then you'll get to share your enthusiasm for that wildlife including peregrine falcons, mountain goats, bald eagles and bighorn sheep with those who attend the festivals!

Hunter Education—teach the next generation of Utah's hunters how to be safe, responsible and ethical.

At the workshop, Parsons-Berstein will highlight the volunteer opportunities at Farmington Bay. Jill West, the DWR's volunteer program coordinator, will also provide information about other volunteer opportunities with DWR.

The workshop is free, and everyone is welcome and encouraged to attend.

After the presentation, the staff at the nature center will take those who attended the workshop on a tour of the Farmington Bay WMA. You might see some bald eagles during the tour. The eagles are just starting their winter migration into Utah.

For more information, call Parsons-Bernstein at (801) 589-2373.

Announcing a Tread Lightly! Tread Trainer Course

When: Wednesday, January 23, 2008

Time: 8:00 am – 5:00pm

Cost: \$50.00

Location: Utah Department of Natural Resources

1594 W. North Temple

Salt Lake City, Utah 84114-5610

Registration deadline: January 2, 2007

Register online at www.treadlightly.org

DESCRIPTION:

The Tread Trainer program is designed to train participants in innovative, practical methods of spreading outdoor ethics to the public with a curriculum specifically focused on motorized and mechanized recreation.

Completing the one-day Tread Trainer course will qualify the participant to become a Tread Lightly!

representative—a ***Tread Trainer***. Once a participant becomes a ***Tread Trainer***, he or she is equipped to present the Tread Lightly! message to other educators, clubs, employees, visitors, enthusiasts or community members. The program was created as a mechanism to disseminate the Tread Lightly! message of responsible recreation through volunteerism.

COMPONENTS:

Trainers complete a one-day training course on the Tread Lightly! ethic and are qualified to present the Tread Lightly! message.

REQUIREMENTS TO REMAIN ACTIVE:



Trainers are required to complete a minimum of one Tread Lightly! presentation or promotion within two years to maintain program benefits.

BENEFITS:

Trainers receive 100-page manual, 2 Tread Lightly! PowerPoint presentations on CD, certificate of completion, a set of durable plastic Tread Lightly! hangtags, set of guides for responsible recreation, set of PSAs, "On the Right Trail" video, \$25 annually in free educational materials, and an extra discount on all Tread Lightly! materials.



Trainers also receive improvements in presentation skills, networking opportunities with other agencies/organizations at the course, expertise in Tread Lightly! ethics and ways to minimize outdoor impacts when recreating, use of the display upon request, updates through a semi-annual newsletter, emails and website.

The key to a successful workshop is to have participants that are familiar with Tread Lightly!, involved in community outreach or recreational training programs, or are interested in developing a higher awareness and competency on responsible recreation ethics.

To register for the Tread Trainer Course visit Tread Lightly!'s website at www.treadlightly.org or call 800-966-9900.

Two changes await big game hunters

Applications accepted starting Jan. 2

Based on past years, as many as 230,000 people will consider applying for a permit to hunt big game in Utah next fall.

If you're one of them, please be aware of two changes:

You must have a hunting or combination license before you can apply for a permit.

Applications will be accepted only through the Division of Wildlife Resources' Web site.

Start applying on Jan. 2

You can apply for a 2008 permit at wildlife.utah.gov starting Jan. 2. Your application must be received through the Web site no later than 11 p.m. on Jan. 31 to be entered in the draw for permits.

If you're not comfortable applying on the Internet, you can also apply over-the-phone. To apply over-the-phone, you must call (801) 538-4700 no later than 5 p.m. on Jan. 31.

Results of the 2008 Big Game Draw will be available by April 30.

Applying for a point

If you don't plan on hunting in 2008, you can still apply for a bonus point or a preference point.

You can start applying for these points at wildlife.utah.gov on Jan. 2. Your application must be received through the Web site no later than 11 p.m. on Feb. 29.

You can also apply for a point over-the-phone starting Jan. 2. The Division of Wildlife Resources will accept phone-in applications at (801) 538-4700 until 5 p.m. on Feb. 29.

Changes

License required

Starting with the 2008 hunts, you must have a current Utah hunting or combination license before you can apply for a big game hunting permit.

"This change is important to the future of the state's wildlife," says Jim Karpowitz, director of the DWR. "As costs continue to rise, the requirement that hunters buy a license will provide us the revenue we need to continue managing big game and other wildlife into the future."

Photo courtesy of U.S. Fish & Wildlife Service



Karpowitz has some advice for you as you decide which license to buy: the hunting license, which costs \$26 for residents, or the combination license, which costs \$30. "I'd encourage you to buy the combination license," he says. "It costs \$4 more than a hunting license, but it also allows you to fish."

Hunting and combination licenses are available at wildlife.utah.gov. You can also obtain one from DWR offices and more than 350 hunting license agents across Utah.

Paying less for a permit

Another change involves the cost for big game permits—some of them will cost less in 2008 than they did this year. For example, Utah residents will pay \$20 less for a general elk permit. And general deer permits cost \$5 less.

You can buy a resident general elk permit for \$45. Resident general deer permits cost \$35.

Apply on the Web

In addition to the new license requirement, you'll also have to apply for a permit on the Internet this year.

"If you've never applied for a permit online before, and you have questions about how to do it, please drop by a DWR office," says Judi Tutorow, wildlife licensing coordinator for the DWR. "We have computers you can use and staff members who can help you through the process."

You can also apply for a permit over-the-phone by calling the DWR at (801) 538-4700.

"If you decide to apply over the phone, you must call us no later than 5 p.m. on Jan. 31," Tutorow says.

If you want to apply for a bonus point or a preference point over-the-phone, you need to call no later than 5 p.m. on Feb. 29.

For more information, call the nearest Division of Wildlife Resources office or the DWR's Salt Lake City office at (801) 538-4700.

Statewide Fishing Report

GENERAL: This week was a big transitional week. Some waters, like Mantua were frozen and had people fishing on them within two days of ice cover. Please use extreme caution when venturing onto new ice. Never venture onto ice that forms along the side of a river—it may look safe on top, but underneath it is constantly being eroded by running water.

CAUSEY RESERVOIR: Safe ice was reported by Sportsman's Warehouse, but no reports of fishing success yet.

EAST CANYON RESERVOIR: No reports of ice yet.

ECHO RESERVOIR: No reports of ice yet.

HOLMES CREEK RESERVOIR: Anglers were on two inches of ice on December 15 and reported slow fishing. The two anglers felt unsecure and kept spread apart. It was a risk they should not have taken. Anything under four inches is never recommended.

HYRUM RESERVOIR: Ice is forming but not safe yet.

LOCOMOTIVE SPRINGS: The ponds get stocked regularly throughout the winter months—this is a great place to experience some peace and quiet and pick up some nice rainbows for dinner.

LOST CREEK RESERVOIR: The ice is reported to be forming, but no reports of access yet.



MANTUA RESERVOIR: People are fishing on four inches of good hard ice, but there are warm springs that can leave soft areas or open spots in the ice, so use caution. Fishing was fair to good for fat perch and nice rainbows.

PINEVIEW RESERVOIR: Ice is forming but there have not been reports of access yet.

PORCUPINE RESERVOIR: Safe ice was reported by anglers, but has not been verified by DWR.

ROCKPORT RESERVOIR: No safe ice was reported yet.

WILLARD BAY RESERVOIR: Ice is now covering the reservoir, but no reports of access yet. Anglers have wondered how ice cover will affect fish populations. The biggest concern is for the food base at Willard Bay—gizzard shad. Gizzard shad can be vulnerable to harsh environmental conditions, which may be exacerbated by the current low water levels. However, gizzard shad are prolific spawners and in general, are able to quickly re-establish themselves in the event of small-scale population reduction.

BIG SAND WASH RESERVOIR: No new reports but surrounding waters do have ice so its likely there is ice on Sandwash. Check ice thickness carefully as edge ice could be quite thin due to filling. Main access is from the boat ramp.

BULLOCK / COTTONWOOD RESERVOIRS: No new reports. Both reservoirs should have ice but check conditions carefully before venturing out. Reservoirs are located approximately five miles north of the town of Gusher.

BROUGH RESERVOIR: No new reports on fishing success just that the reservoir has ice. Check ice condition carefully before venturing out. Reservoir is being filled which may make water murky. Note: Special catch and release regulations, please read proclamation. To get to Brough, take State Route 88 south from US Route 40 (Ouray Road). Turn west at the second dirt road past the high power lines. Follow this road approximately two miles staying to the left at each main fork. Road can be quite rutted.

BROWNIE / SPIRIT LAKE: No new reports from anglers even though roads are accessible. The area has not received much snow from the recent snowstorms. Lakes are now frozen but no information on ice conditions. Check ice condition carefully before venturing out. Warning: whirling disease has been found in this area. Do not clean fish or dump fish parts taken from one water into another lake or stream, also make



sure to clean, dry and sterilize waders, live wells and other fishing gear before venturing to another water. to avoid moving whirling disease.

CALDER / CROUSE RESERVOIRS: Reports of good ice fishing prior to the last set of storms. Area has received recent snow so road access is questionable. The new "trophy fishery" regulation for Calder went into effect on January 1, 2007 so baits and scents can not be used while ice fishing.

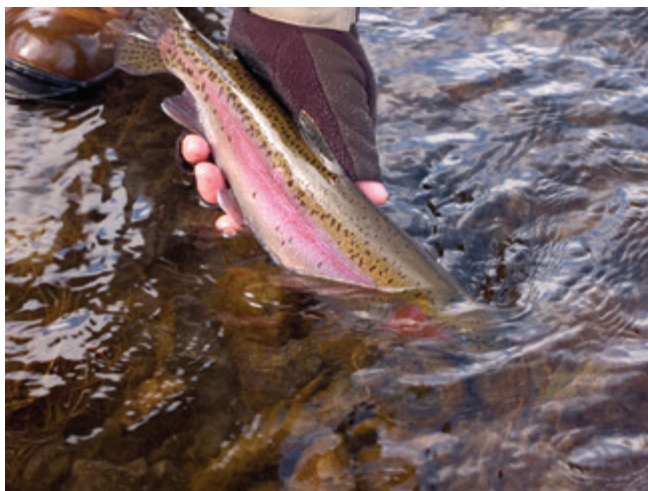
CURRENT CREEK RESERVOIR: Lake is frozen, no reports on fishing conditions. Check ice thickness carefully before venturing out. Area received more snow last week. The roads is usually kept open to the dam.

EAST PARK / OAKS PARK: No new reports, access by skis or snowmobile. Reservoirs should be frozen, check ice condition carefully before venturing out.

FLAMING GORGE: Good fishing for rainbows, lake trout and kokanee on majority of the reservoir. Utah ramps are open. Ice reported down to about Firehole in Wyoming. Rainbows have moved shallow again in response to cooler water temps. Larger fish can be found feeding on points in 10- to 20-foot water or in inflow areas. Rainbows can be caught from shore using bait and lures in the typical spring locations such as Mustang Ridge, the Visitor Center area, Sheep Creek Bay, Antelope Flat, and most shoreline areas in Wyoming. All Rainbows can also be caught trolling small spoons, pop gear or rapalas in 10 to 20 feet of water. Use long line technique or planer boards to get lures away from boat. Very nice sized fish are being caught.

Kokanee fishing is open again as of December 1, 2007

Smallmouth fishing is very slow, fishing becomes difficult during fall and winter.



Smallmouth typically move deeper in winter and can be found as deep as 60 feet.

Lake trout fishing is fair to excellent depending on location and size of targeted fish. Smaller fish are quite catchable and action has been good. Larger fish have pretty much finished the spawn and are now feeding again

making them easier to catch. If boat fishing for lake trout; try trolling bottom structure using down riggers or steel line and flatfish, crank baits, or flashers trailing a lure or minnow for large lake trout. Vertical jigging using tube or bucktail jigs tipped with sucker meat can also be effective for lake trout when they are on the bottom. Long-lining rapalas and other minnow imitation lures a couple hundred feet behind the boat or behind planer boards is a good technique to use to catch large lake trout in the next few weeks. Large fish finish spawning and actively feed near the surface in December. Areas around Linwood Bay are good locations to start. White, brown or chartreuse colored three-inch tube jigs on a 3/16- or 1/4-ounce jig heads tipped with meat can be particularly effective for small lake trout. White tube jigs have been working well the past few weeks. Fish in depths from 50 to 90 feet, also look for suspending fish over deep structure and use your graph to put a jig or lure right in front of them. There are many small- and medium-sized lake trout in Flaming Gorge, so please take advantage of the eight-fish lake trout regulation (one over 28 inches) and harvest a limit. These smaller fish are excellent eating. Fishing is typically best during periods of stable weather and high pressure or just before a front moves in. The current surface temperature in the canyon is 41 to 43° F.

A recent report of ice fishing for burbot in upper Wyoming is fishing has been good and some fish are in the 27- to 30-inch range. Try fishing off the points at night, especially first few hours after sunset as the fish move in from deeper waters. Try working the bottom with jigs tipped with sucker meat or other scented baits. Burbot, or ling cod, were illegally introduced into the upper Green River drainage and have made their way to Flaming Gorge Reservoir. The daily and possession limit for burbot is 25 fish, and all burbot caught must be killed. Please familiarize yourself with the appearance of these fish in case you catch one. Although the fish are quite odd looking in appearance, they are very good to eat with white flesh similar to walleye or perch. These fish are moving south in the reservoir and are now being caught frequently in Utah's waters. Numerous burbot were caught on the Linwood Bay lake trout spawning area with jigs and spoons.

GREEN RIVER: (upper) The flows on the river are currently 800 cfs. Due to low inflows into the reservoir in 2007, flows should remain steady at 800 cfs throughout the winter to conserve water. From Dec 10 to 17, equipment maintenance will require use of the bypass tubes. Water levels should remain close to 800 cfs.

Fishing on the river may slow a bit as the Bureau of Reclamation uses the bypass tubes while doing maintenance on the dam. Dry fly fishing is typically slow during

the winter. Nymphing action has been good to excellent. The slot limit size range has changed from 13–20-inch to 15–22 inches to make regulations more consistent statewide. Nymphing with glo-bugs and San Juan worms with smaller nymphs trailering has been the workhorse. Small midge patterns work some days. Streamers are working well and have been extremely good some days. Size 2–4 buggers such as Goldilox and patterns in olive, pink and white.

Spin fishermen should try small rapalas (floating, countdown and husky jerk); small spinners; black, brown or olive marabou jigs; and small jigs. Please check to see that your tube jigs contain no fish attracting scents as they are illegal to use in the river.

New Zealand mudsnail densities have dramatically increased in several localized areas near Little Hole, and have been documented in most areas of the river. Please thoroughly clean mud and vegetation from waders, boats and fishing gear; and if possible, completely dry equipment before leaving the area. A hot water bath (120° F) will kill mudsnails, and spraying equipment with 409 or a similar soap solution before drying will increase effectiveness.

GREEN RIVER: (lower) Water level is low. No new reports from anglers. Some stretches are beginning to freeze.

MATT WARNER RESERVOIR: No new reports. Iced over and should be good fishing. Last snow storm dropped an additional foot or more snow blocking access from Hwy 191. Likely southern access is closed as well from recent snowfall and deep drifts.

MOON LAKE: No new reports. Should be iced over as observed at lakes at similar elevations.

PELICAN LAKE: New ice about four to six inches thick on areas close to shore. Waterfowl were keeping the middle ice-free but it looks like it has frozen in the last night or so. Anglers reported great fishing on Thursday for bluegill and a few bass.

RED FLEET RESERVOIR: Reservoir is almost completely open water. Some ice forming but only in the shallowest bays. Park personnel were working to plow roads to the boat ramp on Friday.

STARVATION RESERVOIR: No signs of ice yet or reports from anglers.

STEINAKER RESERVOIR: Ice forming only on the shallowest edge of the northern bay, the rest is all open water. Park personnel were working to clear ice and snow from roads.

UINTA MOUNTAIN LAKES AND STREAMS: No new reports. Lakes and streams have ice but check it carefully before venturing out. Area has received several snowstorms. Early ice fishing on lakes and reservoirs is also almost always good. Fishing success on mountain lakes and streams can be spotty so if one isn't producing try moving to another. With over 400 managed fisheries on the South Slope alone, it's easy to find a new place to fish. Always go prepared for serious weather, as the Uinta Mountains are well known for frequent unexpected storms and high winds. Note: The Uinta Mountains have a four-trout limit with a bonus of four more brook trout — see proclamation for details.

AMERICAN FORK RIVER: (Dec 19) Some nice new fishing holes created at the newly-decommissioned power plant (brown trout seen in the newly-constructed clear pools of water). Light fishing pressure and fair success.

BURRASTON POND: (Dec 19) Slow to fair fishing success using traditional baits and lures.

DEER CREEK RESERVOIR: (Dec 19) No safe ice and open water still remains. Fishing success is considered fair. Remember that the bass limit is six, but immediately release all bass over 12 inches long. Walleye limit was increased this year to 10 but only one over 24 inches may be kept.

DIAMOND FORK RIVER: (Dec 19) Light fishing pressure and slow to fair success by using flies, worms or lures. The closed area above three forks will open up to angling on January 1st.

HOBBLE CREEK & CATCH BASIN: (Dec 19) Catch basin is 75% frozen but ice is unsafe. No anglers seen on the river but anglers should expect fair success by using worms or small nymphs. Snowy conditions so dress appropriately.

JORDANELLE RESERVOIR: (Dec 19) No safe ice. Some open water angling possible and slow to fair success reported. Bass limit is six, but immediately release all bass over 12 inches long.

MILL HOLLOW: Drained! No fishing until 2009!

PAYSON LAKE: (Dec 19) Gate to Payson Canyon (Nebo Loop) is now locked, therefore no access to the lakes.

PROVO RIVER: (Dec 19) Fishing is considered fair to good by using small nymphs. Read the [fishing guidebook](#) for the different regulations on the river—some areas allow bait and others do not. Please keep out of the smaller gravel areas



2008 FISHING ESSAY CONTEST

What I would do to ensure the future of fishing in Utah

Six lucky youth will win a tackle package and an all-inclusive fishing trip at Flaming Gorge in June 2008. Don't miss your chance to learn new fishing techniques and sharpen your skills with personal instruction by fishing experts. One winner will be selected from each grade 7–12.

Submit your essay online at wildlife.utah.gov between February 1, 2008, and April 30, 2008. Winners will be notified by phone on May 15, 2008.

**SPORTSMAN'S
WAREHOUSE**

Sponsored by:
Utah Conservation Officers Association
Sportman's Warehouse
Utah Bass Federation
Utah Division of Wildlife Resources

of the river (spawning beds). Size restrictions and reduced limits (two brown trout under 15 inches) are in place in some stretches.

SALEM POND: (Dec 19) Slow success for trout, catfish and bass. The park closes at 10:00 p.m. each night. Remember that regulations include: limit is four fish (Daily bag and possession limit is a total of four fish in the aggregate for all species, for example: one trout, two channel catfish and one bluegill.

SALT LAKE WATER: (Dec 19) Most urban pond anglers report light pressure and fair fishing success. Please don't venture onto any ice on these ponds as they rarely solidify enough to be considered safe.

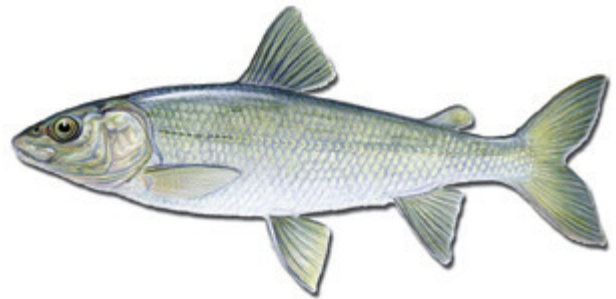
SPANISH OAKS RESERVOIR: (Dec 19) Gate closed and the City states that it's closed for the season.

SPRING LAKE: (Dec 19) Slow success for trout and catfish.

STRAWBERRY RESERVOIR: (Dec 19) About 70% of the reservoir is skimmed over with ice today, ranging from an inch to about four inches. Parking areas are being plowed. Though ice anglers have been seen—especially in Mud Creek Bay and Badger Bays (just west of the Strawberry marina), ice is mostly unsafe and depth of ice can change so please consider waiting for ice to thicken before making the trip. Vehicles cannot drive on the West side of the reservoir beyond the turnoff to the Strawberry Marina. Regulations for the reservoir include an aggregate limit of four trout or kokanee salmon. No more than two of which may be cutthroat trout under 15 inches and no more than one may be a cutthroat over 22 inches long. All cutthroat between 15 and 22 inches must be immediately released (any trout with cutthroat markings is considered a cutthroat). Don't feel compelled to harvest fish on every trip. Please do your part to ensure the future of this heavily utilized fishery by voluntarily releasing fish!

THISTLE CREEK: (Dec 19) Low pressure, with fair success.

TIBBLE FORK RESERVOIR: (Dec 19) Snowy around the reservoir and no safe ice. Ice on Tibble has many soft spots so this is never considered a safe place to ice fish.



UTAH LAKE: (Dec 19) No significant ice forming yet but some anglers are drilling holes while standing on the docks and fishing from the docks in the harbors (one to three inches of ice). Slow fishing for all species. Walleye limit is 10 but only one can be over 24 inches. There is no limit on white bass. Largemouth and smallmouth bass limit is six, but immediately release all largemouth and smallmouth bass over 12 inches long. For more information on conditions call Utah Lake State Park at (801) 375-0731.

VERNON, GRANSTVILLE & SETTLEMENT CANYON RESERVOIR: (Tooele Co.) (Dec 19) No report on ice conditions this week. If open water still exists, expect slow to fair fishing success at Vernon, Grantsville and Settlement Reservoirs.

YUBA RESERVOIR: (Dec 12) No safe ice and few anglers seen. Expect slow success for walleye, northern pike and trout. Perch must be immediately released but new regulations on perch take place January 1st which will allow anglers to keep 10 perch. For more info call the State Park at (435) 758-2611.

BENCHES POND: There's about 12 inches of snow over the ice, which is eight inches thick. According to Todd Munford, the best fishing occurs about 35 yards south of the dam with a green jighead, tipped with a nightcrawler.

BOULGER RESERVOIR: Access is limited to snow machines. Expect a cover of snow over the ice. Todd Munford recommends a jig, tipped with a nightcrawler or salmon egg.

ELECTRIC LAKE: Todd Munford suggests trying the north end, where there's some open water. Try a gold Jakes or Rooster Tail spinner.

FAIRVIEW LAKES: The lakes are frozen with a cover of slush and snow. Todd suggests fishing on the north end in 8 to 10 feet of water. Use Swedish pimples, tipped with a nightcrawler.

HUNTINGTON CREEK: Conservation Officer Casey Mickelsen recommends throwing worms or salmon eggs into the few spots of open water along the creek. Tom Ogden says that the creek will fish well with fly tackle along open water stretches. Trout will be in holes, where you need to concentrate. The best patterns will be a hares ear, Montana nymph or San Juan worm in sizes 12 to 14. Tom says it's important to drift your fly through holes several times before giving up. Some holes will contain a lot of fish, and once you start picking them up, you will often get several fish from the same hole. The bite will be light, so you have to watch carefully or risk missing them. Todd Munford says that fly-fishing below the dam is often good. On nice days, Todd uses a #18 Griffith's gnat on the surface. Brown trout range from 10 to 14 inches.

HUNTINGTON NORTH STATE PARK: State Park Manager Dan Richards reports three to four inches of ice on the lake, but no ice fishing activity.

HUNTINGTON RESERVOIR: (also known as Mammoth Reservoir) The ice is 10 to 14 inches thick with a cover of slush and snow. Take a snow shovel along. Aquatics Manager Paul Birdsey asserts that December is always the best month to ice-fish this reservoir. The ice isn't too thick and the catch rate is typically high. Earlier this month, Huntington resident Kevin Phillips hauled a six-pound tiger trout through the ice. A trout that size is uncommon. Most tigers range from 12 to 18 inches. Reports of good fishing have come in the whole month of December. The best tackle seems to be an ice fly tipped with bait, such as redbside shiner, wax worm, mealworm or nightcrawler. Todd Munford has enjoyed good fishing. He recommends fishing the north end with a Swedish pimple, tipped with a wax worm



or nightcrawler. Todd says that the tigers are often found on the bottom or four to five cranks up from the bottom.

JOE'S VALLEY RESERVOIR: Conservation Officer Casey Mickelsen has checked anglers at Joe's Valley since it reopened. Their success was only marginal. Casey recommends chub meat from the east shoreline. Aquatics Program Manager Paul Birdsey indicates that the reservoir generally freezes in January and the catch rate is high for weeks thereafter.

LAKE POWELL: Visit www.wayneswords.com for the fishing report, provided by Wayne Gustaveson, DWR project leader.

MILLSITE RESERVOIR: As of Dec. 17, the shoreline was iced over for about 200 yards out. Fishing is not recommended until complete ice over and a minimum of three inches of ice forms.

SAN JUAN COUNTY: Sergeant J. Shirley reports that Lloyd's Lake, Monticello and Foy Reservoir are all frozen. Access will be difficult, except by snow machine. Sgt. Shirley doesn't know how thick the ice is. Extreme caution is recommended. J. reports that shoreline anglers have done very well at Blanding #4 with baits, where he has checked some large tiger trout.

SCOFIELD RESERVOIR: A week ago, State Park Manager Dan Richards reported the ice to be about six to eight inches thick. He indicates that anglers have begun using ATVs and snowmobiles on the reservoir. While fishing himself, Dan

iced several rainbows near the Madsen Bay boat ramp, using light green jigs tipped with a nightcrawler. Scofield State Park is hosting a fishing tournament on December 29. Interested anglers are urged to call (435) 687-2491 for registration details.

During the week, Lt. Carl Gramlich fished the south end in nine feet of water using a chartreuse jighead below a silver or chartreuse attractor. He baited the hook with a worm. In three hours, Carl and his friend limited out with eight trout apiece. Carl didn't start getting hits until about 9 a.m. and found the fastest fishing later in the morning. Lt. Gramlich recommends moving around to find deeper water, if you aren't getting hits.

Heidi and Casey Olsen in company with Officer Mike Milburn fished last week. They caught an average of one fish per hour. Heidi beat them all. She iced two 20-inch trout, each weighing three to four pounds. Heidi used a small jig or ice fly under an attractant and tipped the hook with minnow meat. She fished about a foot off the bottom in 14 to 15 feet of water. Officer Milburn noted that fishing was better in the morning.

Austin Christensen emailed the Division to say that he fished last Saturday. In a four-hour period, he and his buddy creeled seven fish. All but one was over 12 inches. They used wax worms on a variety of ice flies or jigs. Best colors were a combination of orange, red and yellow. They fished in 20 feet of water and about a foot off the bottom.

STRAIGHT CANYON: Tom Ogden says that Straight Canyon will fish well from the dam down to where the creek freezes. Trout will be in holes and you need to drift a fly through the hole several times to attract their attention. The best patterns will be prince nymph, hares ear and ugly. Winter fly sizes need to be smaller. Tom recommends 14 to 18.



BAKER RESERVOIR: Some thin ice around the edges, making shore fishing a little difficult.

Catchable rainbows are still being caught. Fall and winter are good times to target brown trout at Baker. Try minnow-imitating lures and flies, or dead minnows.

BARKER RESERVOIRS, NORTH CREEK LAKES: All lakes except Barker and Lower Barker Reservoirs are now closed to fishing until April 2008. All lakes

should be frozen over. Access is limited to snowmobile and ATV. Special regulations on many of the Boulder Mountain waters include a trout limit of four of which only two may be over 14 inches.

BEAVER MOUNTAIN LAKES: All lakes are now frozen over. You can reach Puffer Lake by vehicle. Access to all others is by snowmobile only.

BEAVER RIVER, LOWER: The lower stretch above the fairgrounds is iced over. Open water through most of the rest of the river. Much of the river is on private property, so please treat the area with respect. Much of the private land is open to walk-in access, but some is closed to trespass so watch for signs.

BEAVER RIVER, UPPER: Most of the river is iced over, making fishing difficult. Please prevent the spread of *whirling disease* by cleaning mud from waders and equipment. *Do not transport* any parts of fish caught here to other waters.

BOULDER MTN LAKES: Most Boulder Mtn. lakes are now closed to fishing until April 2008. Check the [Utah Fishing Guidebook \(proclamation\)](#) for which lakes are still open. Access on most of the mountain is limited to snowmobile and ATV. Most lakes should be iced over. One report of good success at Blind Lake for 17- to 19-inch splake. Ice is 8 to 10 inches thick. Special regulations on many of the Boulder Mountain waters include a

Figure 1 trout limit of four of which only two may be over 14 inches.



CHALK CREEK: Small stream east of Fillmore. Catchable rainbows have been stocked in the campground area. Wild rainbows are abundant everywhere else in the stream and can be caught with spinners and flies. Best fishing is away from the campground and more heavily fished spots. The North Fork provides a good spot for those willing to hike. Meadow Creek and Pioneer Creek are other small streams in the area that contain populations of small, wild trout.

CLEAR CREEK: Water is clear and low. Though trout get sluggish during the winter, stream fishing can be very productive throughout the colder months. Successful winter tackle includes nymphs, spinners, and natural baits.

CORN CREEK: Catchable rainbows have been stocked in the campground area. Wild brown trout are abundant everywhere else in the stream and can be caught with spinners and flies. Though trout get sluggish during the winter, stream fishing

can be very productive throughout the colder months. Successful winter tackle includes nymphs, spinners, and natural baits.

DUCK CREEK/ASPEN MIRROR: Ice covers most of the lakes.

EAST FORK SEVIER RIVER BLACK CANYON: Flows are low and slightly turbid. Though trout get sluggish during the winter, stream fishing can be very productive throughout the colder months. Successful winter tackle includes nymphs and spinners. For the section of river from the BLM property boundary (about four miles south of Antimony) upstream to the confluence with Deer Creek, special regulations include the use of artificial flies and lures only and a limit of two trout. Some private land is closed to trespass, so watch for the signs.

EAST FORK SEVIER RIVER KINGSTON CANYON: No ice yet, but the river could freeze over sometime in the next couple of weeks. Should have fair to good fishing until then. There is public access on a section of Kingston Canyon midway through the canyon that was purchased through the Blue Ribbon Program. Look for the signs. Most of the remainder of the canyon is private and posted, so ask permission first.

EAST FORK SEVIER RIVER ABOVE TROPIC RES: Much of the river is covered with ice, making fishing difficult.

ENTERPRISE RESERVOIR: (Upper and Lower): The upper reservoir was drained for dam repairs. The lower reservoir has thin ice. A fish consumption advisory was issued for rainbow trout in Upper Enterprise Reservoir due to elevated levels of mercury. It is recommended that adults limit their consumption to one eight-ounce portion per month. Women who may become pregnant, pregnant women, nursing mothers, and children should limit their consumption to one two-ounce portion per month. For further details, check fishadvisories.utah.gov.

FISH LAKE: Some ice in the marinas and shallow bays. Good success for splake by jigging just off the weedline and out to 40 to 50 feet. Tip your jigs with sucker or perch meat for best success. Rainbows are also caught at the same depths with jigs or traditional baits. Note: A few tiger muskies have moved up from Johnson Reservoir. The general statewide limits on tiger muskie apply here—one fish, which must be over 40 inches.

FORSYTH RESERVOIR: Should have safe ice. No reports on fishing. Please prevent the spread of *whirling disease*. *Do not transport* any parts of fish caught here to other waters.

FREMONT RIVER: Flows above Mill Meadow are low and clear. Though trout get sluggish during the winter, stream fishing can be very productive throughout the colder months. Successful winter tackle includes nymphs, spinners, and natural baits. The lower sections of the stream can be good at any time of year if the water is not turbid. Much of the lower stream is on private land. Ask for permission before fishing on private land. Please prevent the spread of *whirling disease* by cleaning mud from waders and equipment. *Do not transport* any parts of fish caught here to other waters.

GUNLOCK RESERVOIR: Fishing is slow. A fish consumption advisory was issued for largemouth bass from Gunlock due to elevated levels of mercury. It is recommended that adults limit their consumption of largemouth bass to two eight-ounce portions per month. Women who may become pregnant, pregnant women, nursing mothers, and children should limit their consumption to one four-ounce portion per month. For further details, check fishadvisories.utah.gov. Remember special regulations for bass: four bass under 10 inches and two over 20 inches.

JOHNSON RESERVOIR: Musky fishing will be nonexistent until spring. The reservoir contains an abundance of suckers, Utah chubs, and small yellow perch. Special regulations: Whole fish and amphibians are not allowed as bait. Cut bait must be no longer than one inch in any dimension and only one piece per hook. Limit one tiger musky over 40 inches
all tiger muskies less than 40 inches
must be immediately released.



KOLOB RESERVOIR: Access is limited to snowmobile and ATV. Ice may or may not be safe. Use caution. Special regulations include artificial flies and lures only, with a limit of one trout, which must be over 18 inches. Scented jigs are not allowed. Please call the poaching hotline (1-800-662-DEER) to report violations.

KOOSHAREM RESERVOIR: The reservoir is completely iced over and the ice should be safe (based on ice conditions at Otter Creek). Use caution, however.

LOWER BOWNS RESERVOIR: Limited access due to snow.

MAMMOTH CREEK: Flows are generally low and clear. Moderate pressure on weekends, especially in Hatch Meadow. Though trout get sluggish during the winter, stream fishing can be very productive throughout the colder months. Successful winter tackle includes nymphs and spinners. Public access is possible on some of Mammoth Creek west of Highway 89 please watch for and respect private property postings. Special regulations apply to a section of Mammoth Creek—check the [guidebook](#) for details. Please prevent the spread of *whirling disease*. *Do not transport* any parts of fish caught here to other waters.

MILL MEADOW RESERVOIR: 10 inches of ice reported on the north end. Ice near the dam is newer. Fishing for perch is very good. Remember that the perch limit is 20. Please prevent the spread of *whirling disease*. *Do not transport* any parts of fish caught here to other waters.

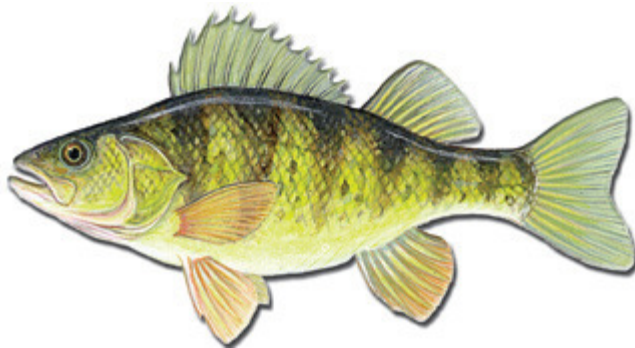
MINERSVILLE RESERVOIR: Completely iced over, but only two inches thick. Fishing is not recommended until it is at least four inches. Special regulations include artificial flies and lures only, with a limit of one trout, which must be over 22 inches. Scented jigs are not allowed. Please call the poaching hotline (1-800-662-DEER) to report violations. Please prevent the spread of *whirling disease*. *Do not transport* any parts of fish caught here to other waters.

MONROE MOUNTAIN

LAKES: Snow limits access.

These lakes typically don't get much ice fishing pressure.

NAVAJO LAKE: The gate is closed access by snowmobile or walking down from the highway. Ice should be safe. Ice fishing is a good way to target splake. Try jigs tipped with sucker meat or stillfishing dead minnows.



NEWCASTLE RESERVOIR: No recent reports. Should have thin ice. A fish consumption advisory was issued for rainbow trout in Newcastle Reservoir due to elevated levels of mercury. It is recommended that adults limit their consumption to two eight-ounce portions per month. Women who may become pregnant, pregnant women, nursing mothers, and children should limit their consumption to

one four-ounce portion per month. For further details, check fishadvisories.utah.gov.

OTTER CREEK RESERVOIR: Four to five inches of ice over most of the lake. Please use caution—early ice at Otter Creek is notorious for being uneven. Fishing is very good in as little as six feet. Try standard ice fishing techniques or stillfishing. Please prevent the spread of *whirling disease*. *Do not transport* any parts of fish caught here to other waters.

PANGUITCH LAKE: Six to eight inches of ice, though thinner in the middle. Fishing is very good for rainbows and cutthroat using standard ice fishing techniques.

SPECIAL REGULATIONS: Limit is four trout, which must be less than 15 inches or over 22 inches. All trout 15 to 22 inches must be released. **TIPS FOR RELEASING FISH IN THE SLOT (15 to 22 inches):** If a fish swallows the hook, please cut the line to avoid mortality. A fish can pass a swallowed hook and survive, but digging the hook out will almost certainly kill the fish. Also try fishing with single hooks.

PARAGONAH (RED CREEK) RESERVOIR: No recent reports. May or may not have safe ice. Access is difficult with snow. Rainbows are very abundant. Harvest is encouraged to allow fish to stay in balance with the food base. Bait is not as successful for wild fish, so try flashy lures or flies.

PINE LAKE: No recent reports. Should have safe ice.

PINE VALLEY RESERVOIR: No recent reports. Use caution on the ice, if any.

PIUTE RESERVOIR: The ice is ranging about one to three inches thick with most of the shoreline covered and some patches of open water out in the middle. Give it another week for safe ice.

QUAIL LAKE: Catchable rainbows have been stocked. Remember the special regulations for bass: four bass under 10 inches and two over 20 inches.



SAND COVE RESERVOIRS: Upper reservoir: No recent reports. Lower reservoir: No recent reports.

SAND HOLLOW RESERVOIR: Bass fishing slows down during the colder months though it is still possible to catch fish during cooler weather. The keys to success are a slow retrieve (often "deadsticking") and moving around to find the fish. Special regulations for bass: four bass under 10 inches and two over 20 inches. Public access to the reservoir is available only through the State Park.

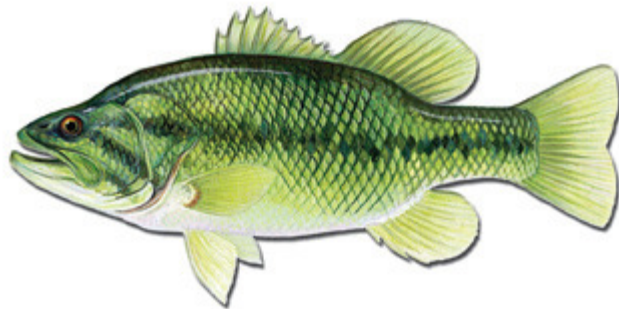
SEVIER RIVER (UPPER), ASAY CREEK: Ice often forms and melts off and on in this stretch. Whitefish will be concentrated in some of the deeper pools and runs through the winter and will take a nymph pattern or wax worm on a dead drift. Most of the trout water on the upper Sevier is located upstream (south) from the town of Hatch. Intermittent sections of good habitat are present above Hatch and easily accessible from Highway 89. Asay Creek west of Highway 89 is on private land and access is restricted.

SEVIER RIVER MARYSVALE CANYON: No ice yet. Fishing was very good for browns and rainbows using any technique. Though trout get sluggish during the winter, stream fishing can be very productive throughout the colder months. Successful winter tackle includes nymphs, spinners, and natural baits.

THOUSAND LAKES MTN: Access is limited by snow. Most lakes should be iced over.

TROPIC RESERVOIR: Should have safe ice. There may be a few catchable rainbows left, though most would not have survived the previous low water levels. Winter is a good time to target large brown trout. The local favorite technique is a dead minnow fished on the bottom.

URBAN PONDS: Washington County ponds: Trout have been stocked three times since early November in all the ponds, with the latest stocking this week. Fishing should be good with any technique, though adults are encouraged to use flies or lures. NOTE: Stratton (Hurricane) Pond was drained in order to locate and evaluate an apparent leak in the pond. Fish stocking was temporarily suspended until the leak can be fixed and the pond refilled.



WIDE HOLLOW RESERVOIR: Thin ice.

YANKEE MEADOW RESERVOIR: The road from SR-143 is snow packed most of the way. Make sure you have 4WD. More snow will further restrict access. Four to six inches of ice. No report on fishing success.

Utah's Hunters and Anglers Have a Significant Impact on the Economy *Spending \$696 Million a Year*

WASHINGTON, D.C. -- Utah's 351,000 hunters and anglers are among the most prominent and influential of all demographic groups, spending more than \$696 million a year on hunting and fishing, according to a new report.

The new report, "Hunting and Fishing: Bright Stars of the American Economy ~ A force as big as all outdoors," spotlights the immense impact hunters and anglers have on the economy at the national and state level.

In Utah, spending by hunters and anglers directly supports 13,000 jobs, which puts \$350 million worth of paychecks into pockets of working residents around the state. Of course, government coffers also benefit -- spending by sportsmen in pursuit of these outdoor activities

generates \$70 million in state and local taxes. These latest figures demonstrate that season after season hunters and anglers are driving the economy from big businesses to rural towns, through booms and recessions.

"Because sportsmen enjoy hunting or fishing alone or in small groups, they are overlooked as a constituency and as a substantial economic force," stated Jeff Crane, president of the Congressional Sportsmen's Foundation. "When you compare spending by hunters and anglers to other sectors, their impact on the state's economy becomes more tangible."

- Sportsmen support more jobs in Utah than the combined employment of Brigham Young University and Utah State University (13,000 jobs vs. 11,000).

Links:

[Utah Fact Sheet](http://www.nssf.org/07report/factsheets/Utah.pdf)

<http://www.nssf.org/07report/factsheets/Utah.pdf>

[Compare Utah with Other States](http://www.nssf.org/07report/)

<http://www.nssf.org/07report/>

- Annual spending by Utah sportsmen is more than the revenues of Sandy-based The Layton Companies - one of the fastest growing companies in the U.S. (\$696 million vs. \$577 million).
- Utah sportsmen annually spend more than the combined cash receipts from cattle and dairy - the state's top two agricultural commodities (\$696 million vs. \$631 million).
- Utah sportsmen outnumber the populations of Salt Lake City and Provo (351,000 vs. 292,000).
- The economic stimulus of hunting and fishing equates to an astounding \$1.9 million a day being pumped into the state's economy.

"Spending by sportsmen benefits not only the manufacturers of hunting and fishing related products, but everything from local mom and pop businesses to wildlife conservation," noted Doug Painter, president of National Shooting Sports Foundation. "And because most hunting and fishing takes place in rural areas, much of the spending benefits less affluent parts of the state."

On the national level, 34 million sportsmen age 16 and older spent more than \$76 billion in 2006, supporting 1.6 million jobs. If a single corporation grossed as much as hunters and anglers spend, it would be among America's 20 largest, ahead of Target, Costco and AT&T. And if all hunters and anglers had voted during the last presidential election, they would have equaled 31 percent of all votes cast. If all hunters and anglers living in Utah voted, they would have equaled 59 percent of all votes cast in the state.

These statistics are impressive and, if anything, they underestimate the impact of sportsmen since they do not take into account the millions of hunters and anglers under 16 years of age or people who were not able to get out and hunt or fish in 2006. When sportsmen's spending is thought of in business terms and compared to other sectors of the economy, it is quite remarkable. From small rural towns scattered across our country's landscape to the bottom-line of Fortune 500 companies located in major cities, if you take away hunting and fishing you take away the equivalent of a multi-billion dollar corporation.

"It is a fairly simple equation – hunters and anglers mean jobs in states and local communities that have made the effort to maintain their hunting and fishing opportunities," said Crane. "The economic impacts that sportsmen have on state economies should be a wake-up call to state governments to welcome and encourage hunting and fishing in their state."

The report, "*Hunting and Fishing: Bright Stars of the American Economy ~ A force as big as all outdoors*," was produced by the Congressional Sportsmen's Foundation with support from the Alliance of Automobile Manufacturers, National Marine Manufacturers Association, National Shooting Sports Foundation and SCI - First For Hunters. The report uses the results from the U.S. Fish and Wildlife Service's 2006 *National Survey of Fishing, Hunting and Wildlife-Associated Recreation* and statistics provided by the American Sportfishing Association and Association of Fish and Wildlife Agencies.

The report: "Hunting and Fishing: Bright Stars of the American Economy ~ A force as big as all outdoors" along with *STATE FACTS* are available on the Web at www.sportsmenslink.org and www.nssf.org

PURCHASE A UTAH STATE PARKS ANNUAL PASS

Salt Lake City - Give the gift of the great outdoors this holiday with a Utah State Parks Annual Pass. Explore Coral Pink Sand Dunes, climb into the kiva at Edge of the Cedars, view wildlife at Antelope Island or visit any of Utah's 41 state parks and museums.

Passes for the 2008 season are now available. Permits purchased before December 31, 2007 are \$70, and increase to \$75 beginning January 1, 2008. Utah residents 62 years and older may purchase a Senior Adventure Pass for \$35, which offers the same benefits as the Annual Pass.

Passes allow the cardholder and up to seven guests in the same vehicle, day-use access to most state parks. Passes are honored at all state parks except This Is The Place Heritage Park, and do not cover the Davis County Causeway fee at Antelope Island State Park.

Annual park passes are for day-use entrance fees only and do not discount overnight camping or golf course fees. Passes may be purchased at any state park, region office, online at www.stateparks.utah.gov and the Department of Natural Resources located at 1594 West North Temple in Salt Lake City. For more information, please call (801) 538-7220 or 877-UT-PARKS.

BOATING TIP OF THE MONTH

Salt Lake City - Though ice is forming on most of Utah's lakes and reservoirs, Utah State Parks Boating Education Specialist Chris Haller reminds northern Utah

boaters that year-round boating opportunities still exist.



Sand Hollow, Quail Creek, and Gunlock state parks are open and offer boaters great winter recreation. Sand Hollow State Park, located in Hurricane, offers blue waters and red sandstone landscapes. Nearby Quail Creek State Park boasts a red rock desert setting and lures anglers. Gunlock State Park, located 20 miles west of St. George, has extraordinary tranquil waters and a mild winter climate.

“These three southern Utah State Parks provide an excellent opportunity to enjoy Utah’s boating waters year-round,” commented Haller. He also reminds boaters to wear life jackets and be prepared for changing weather conditions.

For more information or to take a boating safety course, please go to www.stateparks.utah.gov or call (801) 538-BOAT. Utah State Parks is the state boating authority, providing access, education, and search and rescue on Utah’s boating waters.

CAMP FLOYD STATE PARK TO HOST HISTORY CAMPS FOR KIDS

Fairfield - Camp Floyd History Camps for kids are a fun-filled educational experience about how soldiers lived at Camp Floyd in 1861, and how the Utah War served pre-Civil War objectives. Campers will meet costumed interpreters, play 19th Century games, drill, march and set up a soldier’s camp, fire an 1860’s period firearm, make and take home soldier craft activities. Other activities include conducting a full-scale military exercise; and observing muskets and a cannon fired.

Participants will receive a 2008 history camp tee shirt, Union or Confederate kepi, replica rifle, canteen, haversack, harmonica and more. Campers will return home each day with furlough papers. The park may be able to provide carpooling information with others in your area.

These programs are for both boys and girls, 8-11 years of age. Each camp is limited to 24 participants and will run from 9:00 a.m. - 4:00 p.m. each day. Reservations and \$65 camp fee are required. Choose from the following five

dates:

June 5 - 7

June 19 - 21

July 17 - 19

July 31 - August 2

August 14 - 16

Established in 1858, Camp Floyd housed the largest concentration of U.S. troops then in the United State. The troops were sent to Utah to suppress a rumored

Mormon rebellion, which never took place. The army was recalled back east in 1861 for the Civil War emergency.



Camp Floyd State Park is located in the town of Fairfield, 22 miles southwest of Lehi on State Highway 73. For more information or to request a registration application, please contact the park at 801-768-8932.

Post Christmas Cabin Fever Solution

December 17, Reston, VA. - It's December 27 and cabin fever has set in. The out-of-town relatives are driving you crazy, the frig is down to egg nog and a left-over cheese ball, you've run out of batteries, the cat has knocked most of the ornaments off the tree, the kids are reeling from their candy cane sugar buzz, three new toys have already broken. HELP! How can you escape?



Bundle everyone up and head outside for some time with nature. There are lots of fun outdoor activities that will provide relief for that cooped up and over-stuffed feeling.

Don't know where to go, no problem. The National Wildlife Federation has teamed up with [NatureFind™](#) to provide a quick and easy way to find many of the green places in your community

including regional, state and national parks – and some private parks and nature centers as well.

You just plug in your zip code and NatureFind will display a list of wild places near-by including a web link to each locale, the distance from your house, and the recreational opportunities available at each location. Even when your holiday travels take you to Grandma's house or friends in new cities, you can pull up the information and head outside into Mother Nature's winter wonderland.

The National Wildlife Federation's [Green Hour™](#) web site provides lots of suggestions for things to do when you get outside including animal tracking, catching snowflakes, filling bird feeders and watching for feathered friends to visit, or organizing a winter scavenger hunt. Many of these activities can take place no further than outside your back door.

And when your kids rave about the good time they had outdoors during the holidays, make it a New Year's resolution to give them a Green Hour every day in the new year. Their stress levels will go down while their imaginations soar. They will become fitter and leaner while their immune systems grow stronger. And best of all, it's FUN!

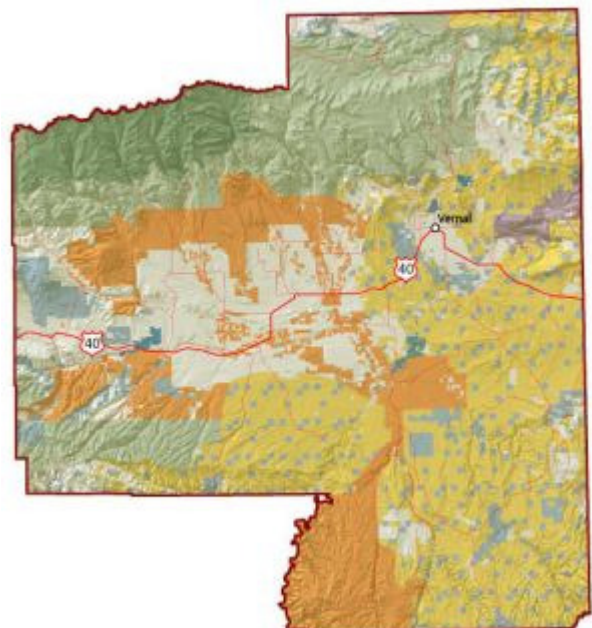
Check out NWF's Green Hour and Nature Find at www.GreenHour.org

Saddletree Draw Leasing – Rock House Development Final Environmental Assessment

Vernal, Utah— The Bureau of Land Management (BLM) Vernal Field Office (VFO)

announces the availability of the final Environmental Assessment (EA) and Finding of No Significant Impact and Decision Record for the Saddletree Draw Leasing and Rock House Development project.

The EA evaluates, analyzes, and discloses to the public the direct, indirect, and cumulative environmental impacts of a



drilling plan proposed by Enduring Resources that would include the lifting of the suspension on lease UTU-81737, and the drilling of up to 60 wells from 17 well pads on that and other valid existing leases in the area.

The project is located about 35 miles southeast of Vernal, Uintah County, Utah, in Township 10 South, Range 23 East (Sections 19-21 and 28-33), T10S, R22E (Section 36), and T11S, R23E (Sections 3-4) in Uintah County, Utah, Salt Lake Base Meridian.

The document is available on the BLM VFO website at <http://www.blm.gov/ut/st/en/fo/vernal.html>. For further information concerning the document, please contact Stephanie Howard at (435) 781-4469.

WINTERFIT SEASON IS HERE!

Utah Winter Games Kicks Off Third Annual Winter Fitness Program

(Park City, UT) It's time to put down the remote, put on the coat, and get outside because WinterFit season is here. The nation's only statewide, entry-level winter fitness program is gearing up help all Utahns enjoy winter instead of hiding from it.

A community outreach effort organized by the Utah Winter Games, WinterFit is a fun group fitness program where teams made up of anywhere from two to ten people get together, choose a captain, register online, and start improving everyone's health. There are two basic categories, Weight Loss and Minutes of Activity, and each team can chose to be in one or both programs.

Why participate? The Centers for Disease Control says the average American gains four pounds over the winter, while last season, the average WinterFit participant lost four pounds. That gives you eight pounds worth of bragging rights. More than that, WinterFit runs through the holidays, so that participants have a reason to get outside and work off the plum pudding.



Whether you're an armchair quarterback or an elite athlete, WinterFit is for participants of all abilities. The goal of WinterFit is to introduce people to good health in the winter in the simplest ways possible. That means if you are in the Minutes of Activity division, you can rack up minutes for your team by shoveling the driveway, building a snowman, or parking at the far end of the parking lot and

recording how long it took you to get into the mall. Of course, you can also go skiing or speed skating if you're up to it.

Why is a team important? Guilt, mostly. If you are part of a team, you don't want to be the one who lets the team down by failing to climb out of the Laz-E-Boy over Christmas week. That's because the team captain logs on once a week to record the team's accomplishments. Teams can be made up of co-workers, friends, families, and neighbors. Last season, groups of employees formed teams to compete against each other inside an office, the staffs of several elementary schools had a serious rivalry, and some teams just wanted to appear at the top of the leader board.

Want to find out more? Log on to www.WinterFit.org or call 1-800-OLY-PARKS.

Camp Floyd State Park hosts Johnston's Army Adventure Camp

Fairfield - Johnston's Army Adventure Camp is designed for Boy Scouts and offers an authentic and unique hands-on adventure! Scouts travel back in time to 1858 - 1861 and enter the world of a soldier with Johnston's Army at Camp Floyd in the Utah Territory. New recruits are processed, mustered into the army and issued uniforms. As a new enlisted private, scouts will shoulder their musket, and march off to a new adventure! Leaving modern possessions behind, the call of bugles and officers' commands will replace the daily routine of 21st century life.

The camp curriculum is based on the history of Johnston's Army at Camp Floyd, Utah Territory, and is designed to complete the requirements for the American Heritage Merit Badge and the National Historic Trails Award. The camp size is limited to 24 scouts and leaders. Camp fees

are \$10 per boy / \$8 per adult, which includes all camp material and breakfast. This two-day program includes a stay over night with sleeping accommodations in recreated Military Tents. Scouts will need to provide their own sleeping gear. The camps are scheduled for:



April 25, 26
May 2, 3 / 16, 17
June 13, 14 / 27, 28
July 11, 12 / 17, 19
August 8, 9 / 22, 23
September 5, 6 / 19, 20
October 10, 11 / 17, 18

Established in 1858, Camp Floyd housed the largest concentration of U.S. troops then in the United State. The troops were sent to Utah to suppress a rumored Mormon rebellion, which never took place. The army was recalled back east in 1861 for the Civil War emergency.

Camp Floyd State Park is located in the town of Fairfield, 22 miles southwest of Lehi on State Highway 73. For more information or to request a registration application, please contact the park at 801-768-8932.

Wrangler® ProGear™ is Proud to Announce Its Partnership with Mossy Oak®

Leader in premium outdoor apparel offers Break-Up® and Treestand™ patterns



GREENSBORO, N.C. – New for Fall 2008, Wrangler® ProGear™ introduces the successful Mossy Oak Break-Up® and new Treestand™ camouflage patterns into several of the brand's popular hunting garments.

"The exclusive agreement between Wrangler ProGear and Mossy Oak establishes a partnership that creates garments to satisfy all outdoor enthusiasts. Specialty

retailers will be able to offer garments that are the ultimate in concealment, comfort and protection," said Jerry Guiliano, merchandise manager, Wrangler Specialty Apparel.

The partnership between Wrangler ProGear and Mossy Oak involves exclusivity on heavyweight denim (nine ounces and higher). Mossy Oak patterns will be included in styles such as the Relaxed Five Pocket Camo Jean, Nine Pocket Hunting Jean and Upland Pant.

"Wrangler is a time-tested, well-known brand that is synonymous with hardworking, active, outdoors people," said Butch English, Executive Vice President of Sales and Marketing at Mossy Oak. "Mossy Oak is thrilled to be associated with a lifestyle brand that makes quality gear for outdoorsmen regardless of their pursuit."

Wrangler ProGear garments provide hunters with the ideal blend of durability, fit, quiet function and overall comfort. With the joining of Mossy Oak patterns and the exclusive room2move™ Fit, wearers are allowed flexibility and concealment in hunting gear that's easy to wear.

The new Wrangler ProGear/Mossy Oak items will be unveiled to retailers this winter. The new collection will be on display at the Wrangler booth, #66661 during the 2008 SHOT Show at the Las Vegas Convention Center, February 2-5.

The full Wrangler ProGear collection includes nine-pocket hunter pants, classic five-pocket hunter pants, lined camo jeans, upland jeans, camo flannel field shirts, guide shirts with blaze orange, shooter shirts, camo tees in short and long sleeves, and the Pro Stalker camo jacket.



Wrangler ProGear garments are sold through specialty retailers nationwide. For more information or to locate a nearby retailer, visit progear.wrangler.com or call 1-888-784-8571.

Cold Weather Welcomed by Fisherman

PIERRE, S.D. – All over the upper Midwest, fishermen are gearing up for a long awaited [ice fishing](#) season. With temperatures dipping into the teens, and below zero in many South Dakota counties, their wait has come to an end.

“Fishing has taken off up here in the northeast,” said Les Rowland, a fishing guide in the Glacial Lakes Region. “Right now we have some of the best jig fishing that I have seen in years.”

While northeast South Dakota has gotten a lot of attention in recent years, the west should not be forgotten among fisherman looking for something different. Both ice fisherman and fly fisherman will be amazed by the abundance of fishing opportunities in the [Black Hills](#) and the serenity that surrounds this sacred place.



“You find yourself sitting out in the middle of a Black Hills reservoir with only the trout and a few begging bald eagles to keep you company,” said Buddy Seiner, outdoor media representative, South Dakota Office of Tourism. “You can definitely get lost in the beauty of it all. That is, of course, if the fish stop biting long enough for you to do so.”

With all that South Dakota has to offer fishermen this winter, it should be easy to find a productive lake or stream. Use caution, however, anytime you venture out onto the ice.

“Until we see some good cold weather for a long period of time, people have to be very careful when going out onto the lakes,” cautioned Rowland. “Right now there is a lot of snow on the ice, so it may be hard to tell where the thin spots are,” he said.

Fishing is a year-round activity in South Dakota and wintertime fishing can be some of the best in the Midwest. Stay safe, watch the weather and come prepared. You will be sure to have a great time out on the ice this winter.

Utah sees more Snow

In case you haven't been paying attention, it's dumping in Utah again and just in time for Christmas. Statewide we're seeing base depths increase and awesome 24

and 48 hour storm totals. Nature is ensuring that we'll have great snow just in time for Christmas. Check out the latest pictures on SkiUtah.com, get our SkiUtah.com [Snow Report](#), and if you haven't already, find yourself a [Hot Deal](#) and get out here in time to enjoy the Christmas powder.



Thanks to snowfall statewide, Beaver Mountain opens this Saturday. Merry Christmas!

Things are getting deep at Alta. Get up there and enjoy the new snow this Christmas!

Also check out these great video's from our mountain resorts of the December Storms:

Solitude:

<http://www.skisolitude.com/galleries/>

Snowbird: http://www.snowbird.com/video/december9_2007.html



COREGEAR WINS “MOST INNOVATIVE PRODUCT OF THE YEAR” AWARD FROM HASBRO FOR TRANSFORMERS EDITION XIP3 JACKET

NEW PALTZ, NY – **CoreGear’s Limited Edition TRANSFORMERS-Xip3**, the world’s first **triple-function jacket**, recently won a “**Most Innovative Product of The Year**” award from HPG, the licensing division of Hasbro, Inc. (NYS: HAS), at its 6th annual Licensing Awards and Summit. The revolutionary Xip3 (pronounced “zip-three”), instantly converts from a jacket into a backpack and even into a pillow with a simple pull of a zipper.

“We are thrilled to receive this award from Hasbro, which adds prestige to what is surely the new “must-have” fashion trend for the streets, the slopes and anywhere else trendsetters go this winter,” says Carine Elen, CEO of CoreGear.

The Limited Edition TRANSFORMERS-Xip3 jacket, under license from HPG, provides TRANSFORMERS fans with a fashionable way to bring the changeability of TRANSFORMERS robots with them wherever they go.

“CoreGear truly embraced the TRANSFORMERS brand essence of “MORE THAN MEETS THE EYE” with their Xip3 jacket, which is an extraordinary example of the level of innovation within this brand,” says Bryony Bouyer, SVP, HPG Americas.

The Limited Edition collection of TRANSFORMERS-Xip3 jackets, each one individually numbered and exclusively available on CoreGear’s website (www.xip3.com), has just started shipping.

Xip3’s sleek, elegant design and incredibly simple engineering are an irresistible combination. Available in men’s, women’s and kid’s sizes, the stunning Xip3 jacket is the perfect centerpiece for any sportswear collection and a head-turning fashion-statement on the slopes.



With its breathable, self-cleaning outer shell complete with nanosphere® technology that repels dirt and water and drives back the wind, and with its ecoSmart™ 100% post consumer PET recycled polyester lining that feels like suede, Xip3 is a unique performance jacket.

Its Scotchlite™ reflective piping gleams in low-light to keep you safe, and its stowaway hood is there to warm when a sudden wind blows. Available in black and orange, the Xip3 jacket features ample storage in the backpack and zippered pockets, the Velcro cuffs provide a tailored fit and a chest pocket sports an MP3 player outlet so you have access to your favorite tunes anywhere you go!

What makes Xip3 such an exceptional development in outerwear is the jacket’s ability to become: (1) a backpack while maintaining all storage capacity and (2) a self-contained pillow with one suede-soft side and a nanosphere side, providing unparalleled comfort while at the game or on the plane. Xip3’s ability to transform through the magic of zippers has propelled the jacket into a worldwide phenomenon.

The sleek backpack features reflective piping, reflective logo mesh, a bottle pocket, a roomy main compartment, a front pocket and a collar stow-away flap.

Xip3 is available in men's and women's sizes (S through XL) for \$495 MSRP and in kid's sizes (6 through 14) for \$395 MSRP. TRANSFORMERS-Xip3 is available in unisex and kid's sizes. To order the Xip3 and TRANSFORMERS Xip3, please visit www.xip3.com.

CoreGear plans to expand the Xip3 Collection with additional innovative designs every season, certain its revolutionary hybrids will transform the outerwear apparel market globally.

Draft Environmental Study Addresses Oil Shale Resources on Public Lands

In response to congressional direction in the Energy Policy Act of 2005, the Bureau of Land Management today announced publication of the Draft Programmatic Environmental Impact Statement (PEIS) to guide future management of public lands containing oil shale and tar sands resources.

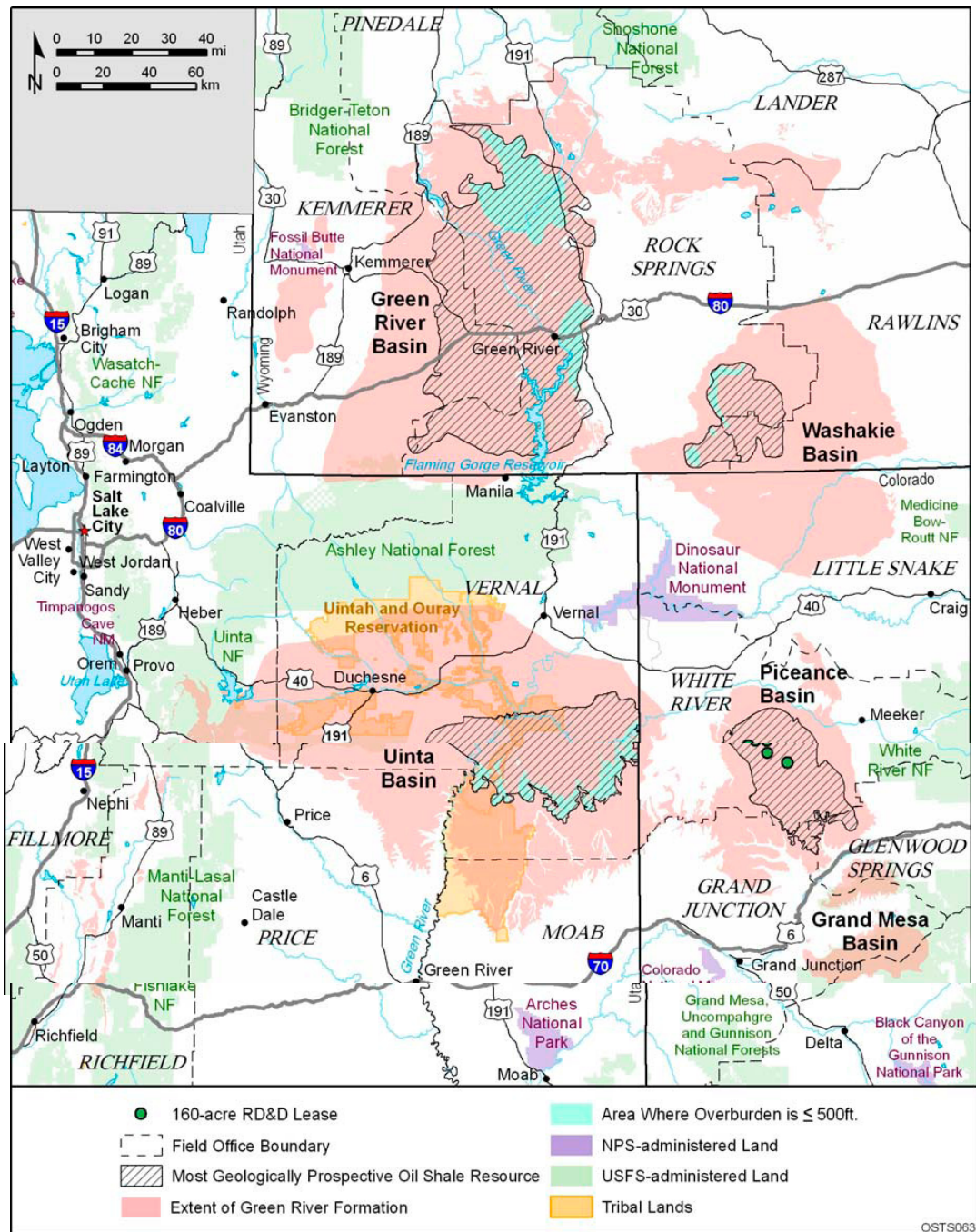


Under the proposal in the Draft PEIS, the BLM would amend land use plans to allocate approximately 1.9 million acres of public lands in Utah, Colorado and Wyoming for potential commercial oil shale development.

The BLM is developing the PEIS pursuant to direction in Section 369(d) of the Energy Policy Act of 2005. The Act declares oil shale and other unconventional fuels to be strategically important domestic energy sources that should be developed to reduce the Nation's growing dependence on imported oil.

"The potential of America's oil shale resources to meet future U.S. demand for fuel is significant," said BLM Director Jim Caswell. "Oil shale deposits on public lands hold the equivalent of 1.23 trillion barrels of oil. The lands we are proposing to make available are estimated to hold, at a minimum, the equivalent of 61 billion barrels.

At the low end of the range, that would yield enough gasoline to keep American tanks filled for 18 years."



Most U.S. oil shale resources are found in the Green River Formation of Colorado, Utah and Wyoming. The federally owned portion of this resource is more than 50 times the country's proven

conventional oil reserves and nearly five times the proven reserves of Saudi Arabia.

Because there is no existing program for leasing these federal resources, the BLM is taking a thoughtful, deliberate approach to completing the PEIS. In cooperation with 14 federal, state and local government agencies, the BLM has been engaged in developing the Draft PEIS for nearly two years.

Caswell noted that the PEIS will not authorize any commercial development projects, provide for any leases to be issued, or commit the BLM to any particular course of action in the future. “The action proposed in the Draft responds to concerns



expressed by the States and local communities serving as cooperating agencies,” he said. “With their help, we’ve developed a proposal that will allow development of this vital asset while protecting other resources found on these lands and minimizing the impacts on local communities.”

Between 305,000 and 1.5 million acres of BLM-managed lands would be excluded from oil shale leasing under the alternatives presented in the Draft PEIS. No leasing would be allowed in Wilderness areas, wilderness study areas, other units of the BLM’s National Landscape Conservation System or Areas of Critical Environmental Concern that are closed to mineral development, among other areas. The PEIS proposes that oil shale resources on identified lands would be leased as a solid mineral, and additional site-specific NEPA analysis would be completed on each application before any lease could be issued.

The document released today is a Draft document. Publication of a Notice of Availability in Friday’s Federal Register begins the 90-day public comment period called for in BLM’s planning regulations. “The BLM welcomes anyone with an interest in oil shale development to review and comment on the Draft PEIS during the next 90 days,” Caswell said.

“Full public involvement is critical throughout the process and help ensure that decisions about oil shale development not only protect the environment but also serve the Nation’s energy needs and support local communities and economies.

The complete Draft PEIS is available in electronic form (PDF) on the project website, <http://ostseis.anl.gov> , beginning today. Beginning tomorrow, paper and CD-ROM copies of the Draft will also be available at the BLM State Offices in Colorado, Utah and Wyoming; and BLM Field Offices in Vernal, Price, Richfield and Monticello, Utah; Meeker, Glenwood Springs and Grand Junction, Colorado; and Kemmerer, Rawlins and Rock Springs, Wyoming. The website will be enabled to take comments electronically beginning Friday, and written comments may be mailed to:

BLM Oil Shale and Tar Sands Resources Draft Programmatic EIS Comments,
9700 South Cass Avenue, Argonne IL 60439.

The BLM previously issued six 160-acre leases for oil shale projects on public lands in Colorado and Utah under its research development and demonstration (RD&D) program. Information available from these projects is included in the PEIS and was considered during development of the alternatives presented in the Draft. For additional information on the BLM’s efforts to develop federal oil shale and tar sands resources, visit

http://www.blm.gov/wo/st/en/prog/energy/oilshale_2.html .

HOLIDAY HOURS FOR BEAR RIVER REFUGE VISITOR CENTER

Around the holidays, the visitor center at Bear River Migratory Bird Refuge will be closed on Saturdays, and open only weekday afternoons from 12:00 to 5:00 p.m. They will be closed all day on Christmas Eve, Christmas Day, New Year's Eve and New Year's Day. Schedule is attached

Light-O-Rama Annual Contest

Two Exciting Contests - Two ways to win - Enter both contests!!!

Worldwide Christmas Display Contest. Anyone Can Enter.

Over \$4000.00 in Prizes!

Contest 1 - Our Traditional Contest.	Contest 2 - YouTube.com
You enter you videos or pictures.	Place your video on YouTube.com
A Judged Contest	Random Drawing

More winners, more prizes, better prizes! This is our best contest ever. This year we have two completely different contests. Go ahead, enter both

contests. Who knows, you may even win twice!!!

Contest 1 .. The Traditional Contest

Entries will be judged on curb appeal, overall creativity, use of materials, exactness of synchronization (computerized shows), use of color and originality! Judging for Category 1 through Category 5 prizes will be performed by a panel of Light O Rama employees.

The Grand Prize winner will be chosen by a single judge: An 8 year old boy. Why an 8 year old boy? We feel it is more in the spirit of Christmas. He will not be sub-consciously influenced by the size of the house or the number channels or the number of lights. The judging becomes simple: "What is it that makes a child smile?". We feel this is the best way to pick the Grand Prize winner. Also, because an 8 year old is not predictable, everyone gets a chance win.

By entering the contest you agree that video of your display may be added to the Light-O-Rama website. Please include what information (if any) you want included with your video (your name, town, a write-up about your display)

To Enter Contest #1

Email or postal mail your entries to Light-O-Rama. **Your entry MUST include the following:**

- A Video or Picture of your Christmas Display.
- Videos Accepted: VHS, miniDV, DVD or Electronic Video File such as WMA.
- For computerized displays, **the number of channels** in your display.
- Include your Name and Address

Email your entry to: Contest@LightORama.com

or

Mail your entry to: Light-O-Rama Contest
P.O. Box 149
Hudson Falls NY 12839

Entries must be received by January 16, 2008. Winners announced March 31, 2008. Include your name and address with the entry.

Contest #1 Prizes

GRAND PRIZE **1000.00 Cash OR \$1,500.00 in LOR Products**

Grand Prize All entries will be eligible for the Grand Prize. Because the Grand Prize will be selected by a child just about anyone can win. Things that catch the eye of an 8 year boy will help you win this prize. This year when asked if he wanted to judge again, Alex said "Sure Dad, I do not think the Yellow Snow song should win again this year."

Category 1 (Static Displays)... This category is for displays that are not computerized. Winner will receive a complete 16 Channel Light-O-Rama system ST-SP-16: Value \$419.95*

Category 2 (Computerized 32 channels or less)... This category is for computerized displays with 32

or fewer channels of control. Winner will receive a Light-O-Rama LOR1602W, 16 channel light controller. Value \$329.95*

Category 3 (Computerized 33 to 64 channels)... This category is for computerized displays with between 33 and 64 channels of control. Winner will receive a Light-O-Rama LOR1602W, 16 channel light controller. Value \$329.95*

Category 4 (Computerized 65 to 128 channels)... This category is for computerized displays with between 65 and 128 channels of control. Winner will receive a Light-O-Rama LOR1602W, 16 channel light controller. Value \$329.95*

Category 5 (Computerized Unlimited more than 128 channels)... This category is for computerized displays with more than 128 channels of control. Winner will receive a Light-O-Rama LOR1602W, 16 channel light controller. Value \$329.95*

*In the event that the winner is from outside of North America alternate prizes of equal value may be awarded..

Contest 2 .. The YouTube.com Contest

The **winner** of this contest will be **drawn at random** from the entries received. If you use Light-O-Rama then you can win!

To enter Contest #2:

- You must use Light-O-Rama hardware and software in your display.
- Post a video of your animated display on YouTube.com
- Your YouTube posting must reference Light-O-Rama in the key words and/or in the video clip.
- You can enter more than one entry however each entry must be a different video. If you have two entries rather than one then you double your chances to win.
- Send an email to YouTube@lightorama.com for each entry that you post. Include a link to your YouTube entry. Also include the number of channels you are using in your display.

Contest #2 Prize:

The winner of contest 2 will win a new Dell Laptop valued at over \$1000.00



Vostro™ 1500

**Intel® Core™ 2 Duo processor,
Genuine Windows® XP Home, 15.4"
Widescreen, 2GB Memory, 120GB
Hard Drive, CD/DVD Burner, 128MB
nVidia Graphics, Integrated Web Cam**

General Contest Rules

1. Employees of Light O Rama Inc., and such employees' immediate family members and persons with whom such employees are domiciled are excluded from this contest.
2. Decisions of the contest judges are final.
3. By claiming the prize, the winners authorize the use, without additional compensation of their name and/or likeness and/or voice/photograph and municipality of residence for promotion and/or advertising purposes in any manner and in any medium (including without limitation, radio broadcasts, newspapers and other publications and in television or film releases, slides, videotape, distribution over the internet and picture date storage) which Light O Rama may deem appropriate.
4. In accepting the prize, the winner acknowledges that Light O Rama, Inc. may not be held liable for any loss, damages or injury associated with accepting or use of prizes.
5. Light O Rama, Inc. retains the rights, in its absolute and sole discretion, to make substitutions of equivalent kind or approximate value in the event of the unavailability of any prize or component of the prize for any reason whatsoever.
6. This contest is subject to all USA federal, state and municipal laws.
7. One entry per person with Contest #1. Multiple entries allowed in Contest #2. All entries become the property of Light-O-Rama, Inc. Entrants agree that their entries may be displayed on the Light-O-Rama web site.